

Notes:

- installation instructions in [TDS](#)
- apply joint seal in opening, flush with wall/floor on 2 sides
- **other pipe dØ + s1** (thickness) are allowed within range and same pipe material
- angle: perpendicular + all angles between 90° and 45°

principle detail

Firetect®

tested property

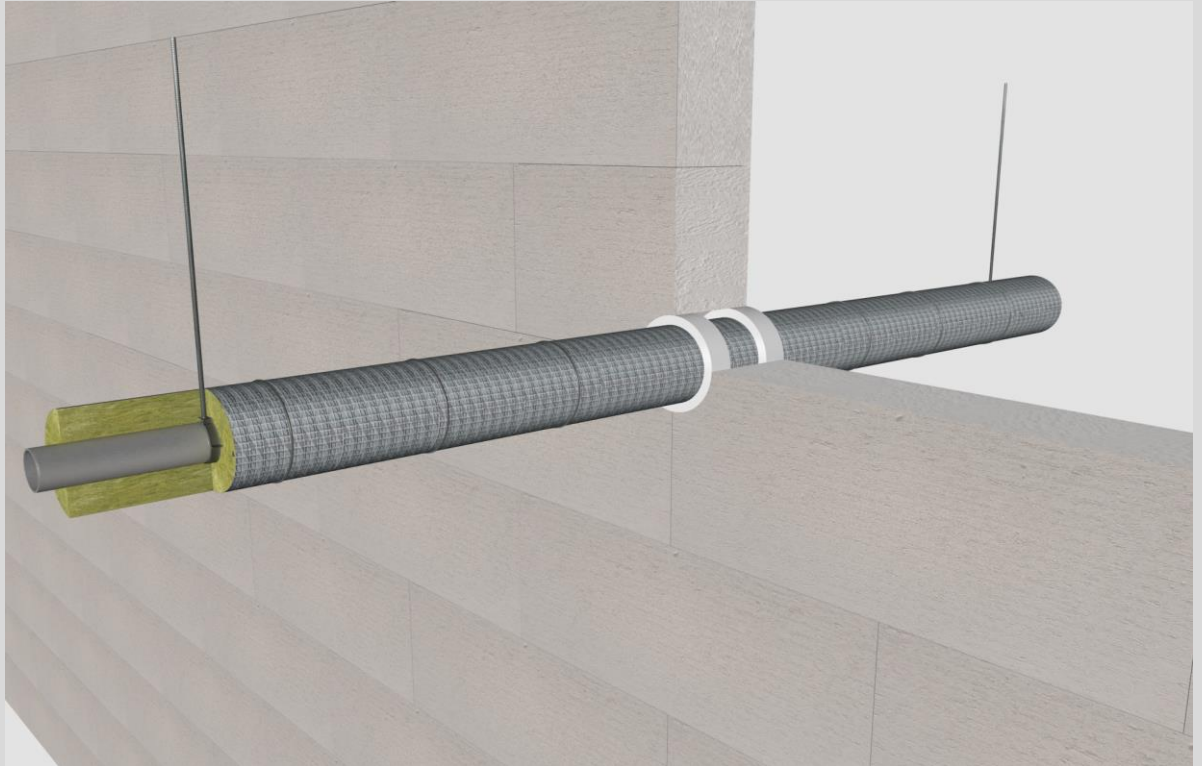
fire resistance

test method

EN 1366-3

service no.

8-7-5rs



steel pipes

Acrylic sealant

service type ¹⁾		pipe insulation		EI	constructive element ²⁾	Firetect joint seal		application	backing required	max. opening in construction	pipe end configuration	max. angle
dØ (mm)	s1 (mm)	min. 60 kg/m ³ eg Armaflex				width	depth					
up to												
Ø12	1,0	synth. rubber 13mm	700 LS + LI + CS + CI	EI 120	rigid walls ≥ 150 mm	10 mm	25 mm	2 sides	-	58 mm	C/U + U/C + C/C	perpendicular + all angles between 90° and 45°
		13mm	700 LS + LI + CS + CI	EI 120	rigid floors ≥ 150 mm	10 mm	25 mm	2 sides	-	58 mm	C/U + U/C + C/C	
Ø15	1,0	synth. rubber 13mm	700 LS + LI + CS + CI	EI 120	rigid walls ≥ 150 mm	10 mm	25 mm	2 sides	-	61 mm	C/U + U/C + C/C	
		13mm	700 LS + LI + CS + CI	EI 120	rigid floors ≥ 150 mm	10 mm	25 mm	2 sides	-	61 mm	C/U + U/C + C/C	
		rock wool 25mm	1000 LS + LI + CS + CI	EI 120	rigid walls ≥ 150 mm	7 mm	25 mm	2 sides	-	82 mm	C/U + U/C + C/C	
		25mm	1000 LS + LI + CS + CI	EI 120	rigid floors ≥ 150 mm	7 mm	25 mm	2 sides	-	82 mm	C/U + U/C + C/C	
Ø22	1,1	synth. rubber 13mm	700 LS + LI + CS + CI	EI 120	rigid walls ≥ 150 mm	10 mm	25 mm	2 sides	-	68 mm	C/U + U/C + C/C	
		13mm	700 LS + LI + CS + CI	EI 120	rigid floors ≥ 150 mm	10 mm	25 mm	2 sides	-	68 mm	C/U + U/C + C/C	
		rock wool 25mm	1000 LS + LI + CS + CI	EI 120	rigid walls ≥ 150 mm	5 mm	25 mm	2 sides	-	82 mm	C/U + U/C + C/C	
		25mm	1000 LS + LI + CS + CI	EI 120	rigid floors ≥ 150 mm	5 mm	25 mm	2 sides	-	82 mm	C/U + U/C + C/C	
Ø28	1,2	synth. rubber 13mm	700 LS + LI + CS + CI	EI 120	rigid walls ≥ 150 mm	10 mm	25 mm	2 sides	-	74 mm	C/U + U/C + C/C	
		13mm	700 LS + LI + CS + CI	EI 120	rigid floors ≥ 150 mm	10 mm	25 mm	2 sides	-	74 mm	C/U + U/C + C/C	
Ø32	1,5	rock wool 25mm	1000 LS + LI + CS + CI	EI 120	rigid walls ≥ 150 mm	10 mm	25 mm	2 sides	-	102 mm	C/U + U/C + C/C	
		25mm	1000 LS + LI + CS + CI	EI 120	rigid floors ≥ 150 mm	10 mm	25 mm	2 sides	-	102 mm	C/U + U/C + C/C	
Ø42,2	3,25	rock wool 25 mm	1000 LS + LI + CS + CI	EI 120	rigid walls ≥ 150 mm	9 mm	25 mm	2 sides	-	110 mm	C/U + U/C + C/C	
		25 mm	1000 LS + LI + CS + CI	EI 120	rigid floors ≥ 150 mm	9 mm	25 mm	2 sides	-	110 mm	C/U + U/C + C/C	
Ø54	2,0	rock wool 32 mm	1150 LI	EI 120	rigid walls ≥ 150 mm	smokeseal		2 sides	-	200 x 200 mm	C/C	
max.												
Ø219,1	4,50	rock wool 25 mm	1000 LS + LI + CS + CI	EI 120	rigid floors ≥ 150 mm	15 mm	25 mm	2 sides	-	299 mm	C/U + U/C + C/C	
		25 mm	1000 LS + LI + CS + CI	EI 120	rigid floors ≥ 150 mm	15 mm	25 mm	2 sides	-	600 x 700 mm	C/U + U/C + C/C	

in PA board 2S 50 mm

¹⁾ Penetration services must be supported; support distance ≤ 500mm (wall) or ≤ 400mm (floor).

²⁾ Constructive element must be classified acc. EN 13501-2 for the required fire resistance period.