

**Notes:**

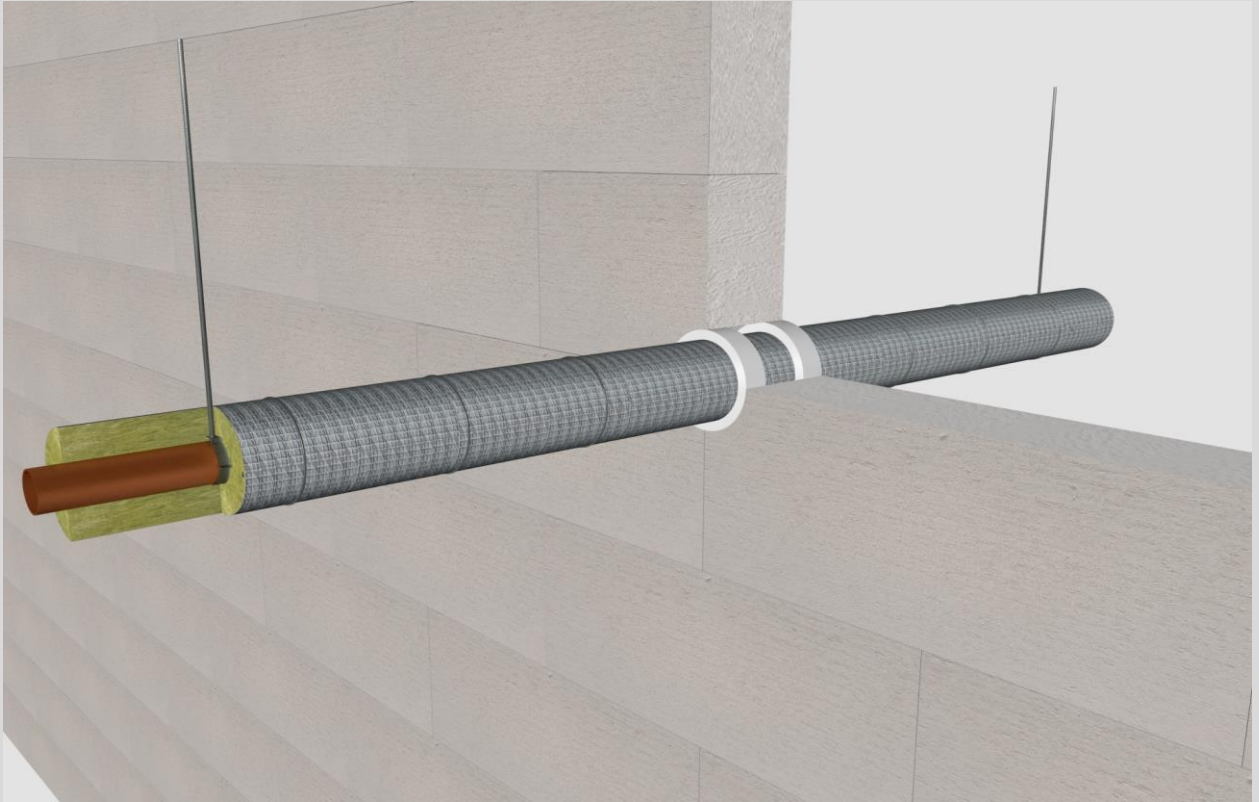
- installation instructions in [TDS](#)
- apply joint seal in opening, flush with wall/floor on 2 sides
- **other pipe dØ + s1** (thickness) are allowed within range and same pipe material
- angle: perpendicular + all angles between 90° and 45°

**principle detail**

**Firetect®**

tested property  
test method  
service no.

fire resistance  
EN 1366-3  
**8-7-5r**



**copper pipes**

service type <sup>1)</sup> dØ (mm) s1 (mm)	pipe insulation min. 60 kg/m <sup>3</sup> eg Armaflex	EI	constructive element <sup>2)</sup>	Acrylic sealant		application 1 or 2 sides	backing required	max. opening in construction	pipe end configuration	max. angle
				Firetect joint seal width	depth					
<b>up to</b> Ø12	1,0 synth. rubber 13mm	700 LS + LI + CS + CI	EI 120 rigid walls ≥ 150 mm	10 mm	25 mm	2 sides	-	58 mm	C/U + U/C + C/C	perpendicular + all angles between 90° and 45°
	13mm	700 LS + LI + CS + CI	EI 120 rigid floors ≥ 150 mm	10 mm	25 mm	2 sides	-	58 mm	C/U + U/C + C/C	
Ø15	1,0 synth. rubber 13mm	700 LS + LI + CS + CI	EI 120 rigid walls ≥ 150 mm	10 mm	25 mm	2 sides	-	61 mm	C/U + U/C + C/C	
	13mm	700 LS + LI + CS + CI	EI 120 rigid floors ≥ 150 mm	10 mm	25 mm	2 sides	-	61 mm	C/U + U/C + C/C	
	rock wool 25 mm	1000 LS + LI + CS + CI	EI 120 rigid walls ≥ 150 mm	7 mm	25 mm	2 sides	-	82 mm	C/U + U/C + C/C	
	25 mm	1000 LS + LI + CS + CI	EI 120 rigid floors ≥ 150 mm	7 mm	25 mm	2 sides	-	82 mm	C/U + U/C + C/C	
Ø22	1,1 synth. rubber 13mm	700 LS + LI + CS + CI	EI 120 rigid walls ≥ 150 mm	10 mm	25 mm	2 sides	-	68 mm	C/U + U/C + C/C	
	13mm	700 LS + LI + CS + CI	EI 120 rigid floors ≥ 150 mm	10 mm	25 mm	2 sides	-	68 mm	C/U + U/C + C/C	
	rock wool 25 mm	1000 LS + LI + CS + CI	EI 120 rigid walls ≥ 150 mm	5 mm	25 mm	2 sides	-	82 mm	C/U + U/C + C/C	
	25 mm	1000 LS + LI + CS + CI	EI 120 rigid floors ≥ 150 mm	5 mm	25 mm	2 sides	-	82 mm	C/U + U/C + C/C	
Ø28	1,2 synth. rubber 13mm	700 LS + LI + CS + CI	EI 120 rigid walls ≥ 150 mm	10 mm	25 mm	2 sides	-	74 mm	C/U + U/C + C/C	
	13mm	700 LS + LI + CS + CI	EI 120 rigid floors ≥ 150 mm	10 mm	25 mm	2 sides	-	74 mm	C/U + U/C + C/C	
<b>max.</b> Ø32	1,5 rock wool 25 mm	1000 LS + LI + CS + CI	EI 120 rigid walls ≥ 150 mm	10 mm	25 mm	2 sides	-	102 mm	C/U + U/C + C/C	
	25 mm	1000 LS + LI + CS + CI	EI 120 rigid floors ≥ 150 mm	10 mm	25 mm	2 sides	-	102 mm	C/U + U/C + C/C	
Ø54	2,0 rock wool 32 mm	1150 LI	EI 120 rigid walls ≥ 150 mm	smokeseal		2 sides	-	200 x 200 mm	C/C	

in PA board 2S 50 mm

<sup>1)</sup> Penetration services must be supported; support distance ≤ 500mm (wall) or ≤ 400mm (floor).

<sup>2)</sup> Constructive element must be classified acc. EN 13501-2 for the required fire resistance period.