

Notes:

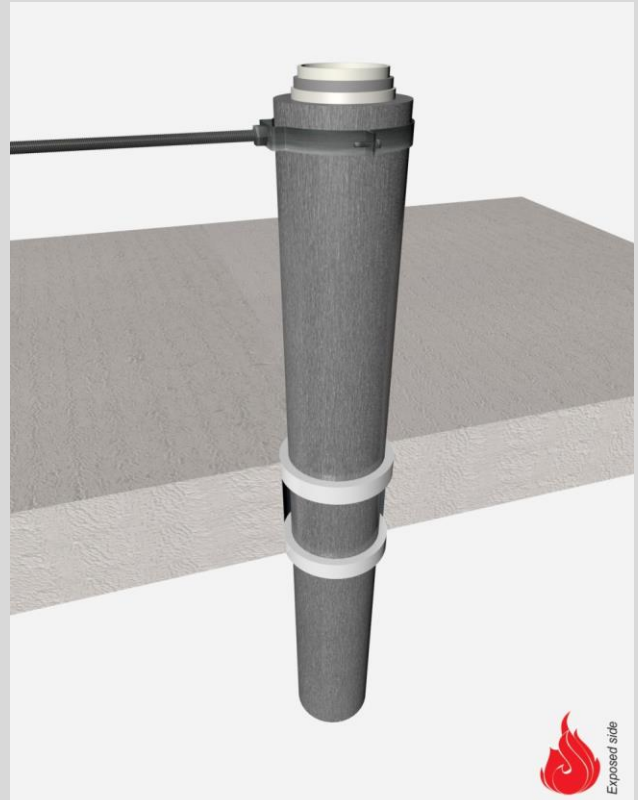
- installation instructions in [TDS](#)
- apply joint seal in opening, flush with wall/floor on 2 sides
- **other pipe dØ + s1** (thickness) are allowed within range and same pipe material
- EI for flexible walls ≥100mm is also applicable for **rigid walls** ≥100mm
- angle: perpendicular + all angles between 90° and 45°

principle detail



tested property
test method
service no.

fire resistance
EN 1366-3
8-5-9



aluPE-X pipes

Acrylic sealant

| service type ¹⁾ | | pipe insulation | | EI | constructive element ²⁾ | Firetect joint seal | | application | backing required | max. opening in construction | pipe end configuration | max. angle |
|----------------------------|---------|---------------------------|-----------------------|--------|------------------------------------|---------------------|-------|-------------|------------------|------------------------------|------------------------|--|
| dØ (mm) | s1 (mm) | min. 60 kg/m ³ | eg Armaflex | | | width | depth | | | | | |
| up to | | | | | | | | | | | | |
| Ø16 | 2,0 | - | - | EI 120 | flexible walls ≥ 100 mm | 5 mm | 25 mm | 2 sides | - | 26mm | U/C + C/C | perpendicular + all angles between 90° and 45° |
| | | synth. rubber 13mm | 700 LS + LI + CS + CI | EI 120 | rigid walls ≥ 150 mm | 10 mm | 25 mm | 2 sides | - | 62mm | U/C + C/C | |
| | | 13mm | 700 LS + LI + CS + CI | EI 120 | rigid floors ≥ 150 mm | 10 mm | 25 mm | 2 sides | - | 62 mm | U/C + C/C | |
| Ø25 | 2,5 | - | - | EI 120 | flexible walls ≥ 100 mm | 10 mm | 25 mm | 2 sides | - | 45 mm | U/C + C/C | |
| | | synth. rubber 13mm | 700 LS + LI + CS + CI | EI 120 | rigid walls ≥ 150 mm | 10 mm | 25 mm | 2 sides | - | 71 mm | U/C + C/C | |
| | | 13mm | 700 LS + LI + CS + CI | EI 60 | rigid walls ≥ 100 mm | 10 mm | 25 mm | 2 sides | - | 200x1000 mm | U/C + C/C | |
| | | | | | in FR mortar | 10 mm | 25 mm | 2 sides | - | 200x1000 mm | U/C + C/C | |
| | | | | | rigid floors ≥ 150 mm | 10 mm | 25 mm | 2 sides | - | 71 mm | U/C + C/C | |
| Ø63 | 6,0 | synth. rubber 13mm | 700 LS + LI + CS + CI | EI 120 | rigid walls ≥ 150 mm | 10 mm | 25 mm | 2 sides | - | 109 mm | U/C + C/C | |
| | | 13mm | 700 LS + LI + CS + CI | EI 60 | rigid walls ≥ 100 mm | 10 mm | 25 mm | 2 sides | - | 200x1000 mm | U/C + C/C | |
| | | 13mm | 700 LS + LI + CS + CI | EI 120 | rigid floors ≥ 150 mm | 10 mm | 25 mm | 2 sides | - | 109 mm | U/C + C/C | |
| max. | | | | | | | | | | | | |
| Ø75 | 7,5 | synth. rubber 13mm | 700 LS + LI + CS + CI | EI 120 | rigid walls ≥ 150 mm | 10 mm | 25 mm | 2 sides | - | 121 mm | U/C + C/C | |
| | | 13mm | 700 LS + LI + CS + CI | EI 60 | rigid walls ≥ 100 mm | 10 mm | 25 mm | 2 sides | - | 200x1000 mm | U/C + C/C | |
| | | 13mm | 700 LS + LI + CS + CI | EI 120 | rigid floors ≥ 150 mm | 10 mm | 25 mm | 2 sides | - | 121 mm | U/C + C/C | |

¹⁾ Penetration services must be supported; support distance ≤ 500mm (wall) or ≤ 400mm (floor).

²⁾ Constructive element must be classified acc. EN 13501-2 for the required fire resistance period. EI for flexible walls ≥100mm is also applicable for rigid walls ≥100mm!