

Notes:

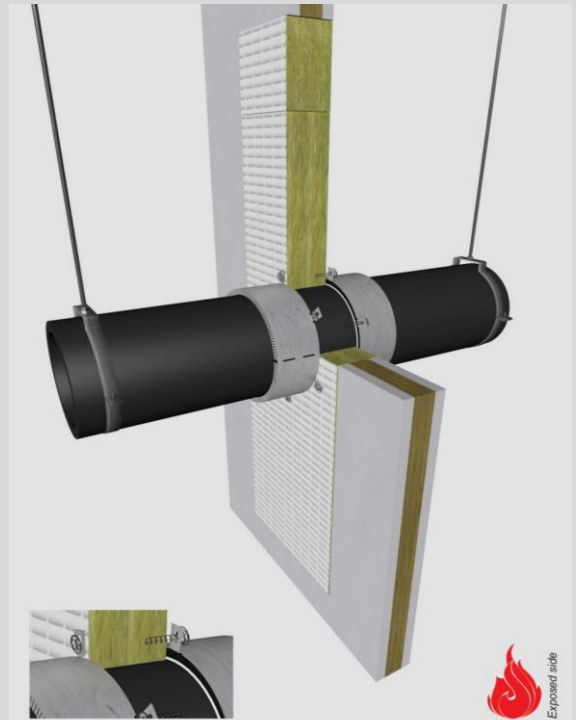
- installation instructions in [TDS](#)
- apply smoke seal Firetect Acrylic on 2 sides
- **other pipe dØ + s1** (thickness) are allowed within range and same pipe material
- EI for flexible walls ≥100mm is also applicable for **rigid walls** ≥100mm
- angle: perpendicular + all angles between 90° and 45° (default for range) or 15° (individually tested)

principle detail

Firetect®

tested property
test method
service no.

fire resistance
EN 1366-3
7-14



PE + PP + PVC pipes

FMU collar

dØ (mm)	service type ¹⁾ s1 (mm)	non-standard config.	🔥 EI	constructive element ²⁾	Firetect pipe collar Ø in mm	application 1 or 2 sides	finish required	max. opening in construction	pipe end configuration	max. angle
up to Ø110	PE	3,4 up to 10,0	EI 60	flexible walls ≥ 100 mm	Ø110	2 sides	*	110 mm	U/C + C/C + C/C	perpendicular + all angles between 90° and 45°
	PVC	2,7 up to 10,0								
	PP	2,7 up to 6,3								
Ø110	PE	3,4 up to 10,0	EI 60	flexible walls ≥ 100 mm	Ø110	2 sides	*	600x1500 mm	U/C + C/C + C/C	
	PVC	2,7 up to 10,0				2 sides	*	600 x 1200 mm	U/C + C/C + C/C	
	PP	2,7 up to 6,3				2 sides	*	264 x 264 mm	U/C + C/C + C/C	
Ø125	PE	3,9 up to 11,7	EI 60	flexible walls ≥ 100 mm	Ø110	2 sides	*	127 mm	U/C + C/C + C/C	
	PVC	3,1 up to 11,7								
	PP	3,1 up to 7,1								
Ø140	PE	4,9 up to 14,6	EI 60	flexible walls ≥ 100 mm	Ø140	2 sides	*	140 mm	U/C + C/C + C/C	
	PVC	4,0 up to 14,6								
	PP	4,0 up to 14,6								
Ø160	PE	4,9 up to 14,6	EI 60	flexible walls ≥ 100 mm	Ø160	2 sides	*	160 mm	U/C + C/C + C/C	
	PVC	4,0 up to 14,6								
	PP	4,0 up to 14,6								
Ø200	PE	6,2 up to 18,2	EI 60	flexible walls ≥ 100 mm	Ø200	2 sides	*	200 mm	U/C + C/C + C/C	
	PVC	4,9 up to 18,2								
	PP	4,9 up to 18,2								
max.										
Ø250	PE	9,6 up to 22,7	EI 60	flexible walls ≥ 100 mm	Ø250	2 sides	*	400 x 1375 mm	U/C + C/C + C/C	
PVC	6,2 up to 22,7									
PP	6,2 up to 22,7									

>> continued on page 2

* smoke seal Acrylic on 2 sides

in PA board 2S 50 mm

¹⁾ Penetration services must be supported; support distance ≤ 500mm.

²⁾ Constructive element must be classified acc. EN 13501-2 for the required fire resistance period. EI for flexible walls ≥100mm is also applicable for rigid walls ≥100mm!

Notes:

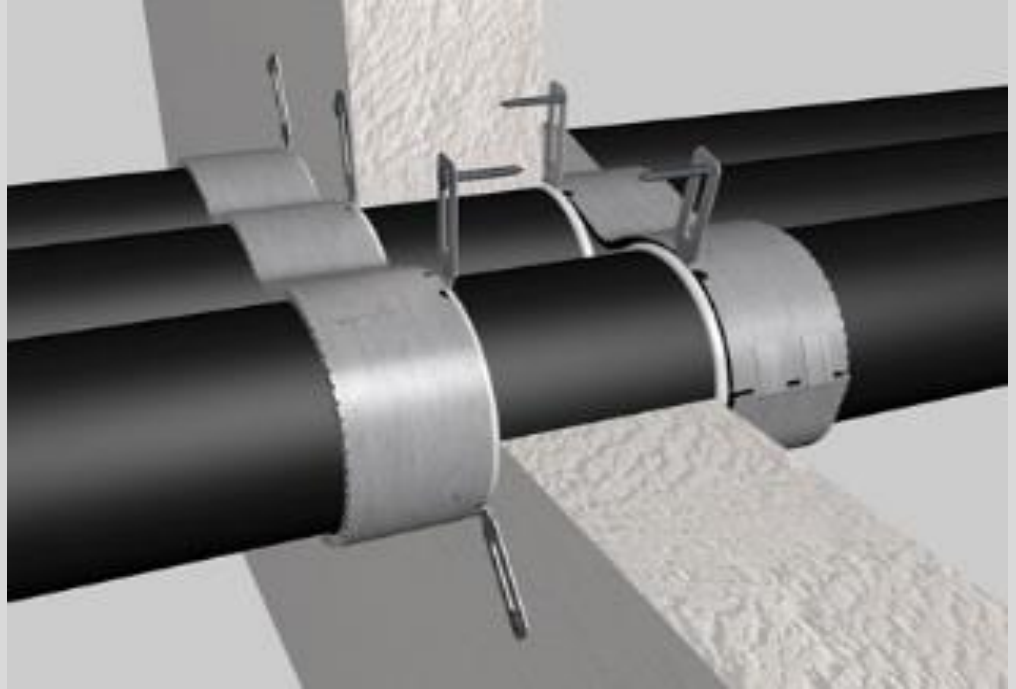
- installation instructions in [TDS](#)
- apply smoke seal Firetect Acrylic on 2 sides
- **other pipe dØ + s1** (thickness) are allowed within range and same pipe material
- EI for flexible walls ≥100mm is also applicable for **rigid walls** ≥100mm
- angle: perpendicular + all angles between 90° and 45° (default for range) or 15° (individually tested)

principle detail

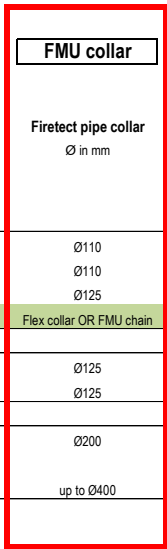


tested property
test method
service no.

fire resistance
EN 1366-3
Q257



PE + PP + PVC pipes



dØ (mm)	service type ¹⁾ s1 (mm)	non-standard config.	🔥 EI	constructive element ²⁾	Firetect pipe collar Ø in mm	application 1 or 2 sides	finish required	max. opening in construction	pipe end configuration	max. angle
individual test results										
Ø110	PE	3,4		flexible walls ≥ 100 mm	Ø110	2 sides	*	110 mm	U/U + C/U + U/C + C/C + C/C	default: perpendicular + all angles between 90° and 45° or tested with max. 15° angle
	PP	2,7	EI 120	flexible walls ≥ 100 mm	Ø110	2 sides	*	110 mm	U/U + C/U + U/C + C/C + C/C	
	PE	4,2	EI 120	rigid walls ≥ 100 mm	Ø125	2 sides	*	115 mm	U/C + C/C + C/C	
	PE	10,0	EI 90	rigid walls ≥ 100 mm	Flex collar OR FMU chain	2 sides	*	330 x 330 mm	U/C + C/C	
Ø125	uPVC	3,7	EI 90	flexible walls ≥ 100 mm	Ø125	2 sides	*	125 mm	U/C + C/C	
	PP	3,1	EI 90	flexible walls ≥ 100 mm	Ø125	2 sides	*	125 mm	U/C + C/C	
Ø200	PVC	6,0	EI 60	rigid walls ≥ 150 mm	Ø200	2 sides	*	255 mm	U/C + C/C	
Ø400	PVC	12,5	EI 90	rigid walls ≥ 150 mm	up to Ø400	2 sides	*	405 mm	C/C	

* smoke seal Acrylic on 2 sides

¹⁾ Penetration services must be supported; support distance ≤ 500mm.

²⁾ Constructive element must be classified acc. EN 13501-2 for the required fire resistance period. EI for flexible walls ≥100mm is also applicable for rigid walls ≥100mm!

³⁾ Max. angle: perpendicular + all angles between 90° and 45° + 0° to max. 15°