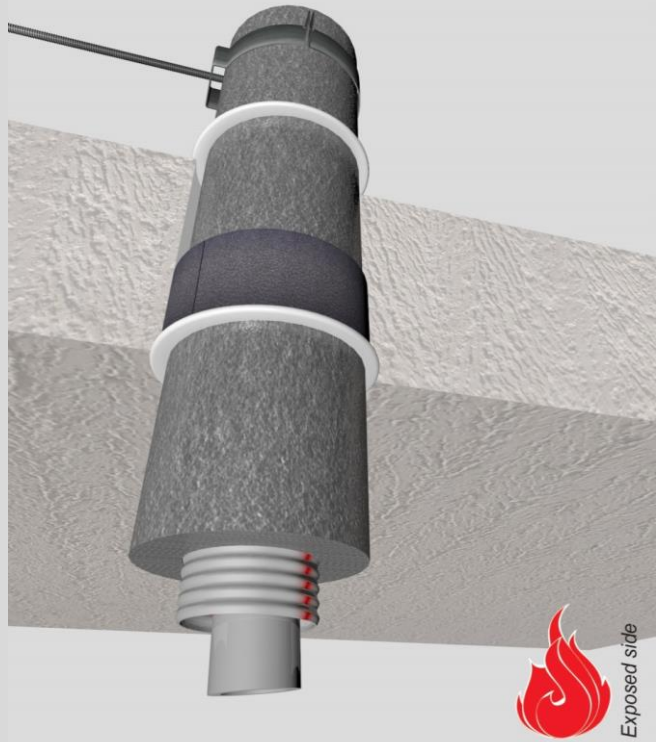


**Notes:**

- installation instructions in [TDS](#)
- apply smoke seal Firetect Acrylic on 2 sides
- **other pipe dØ + s1** (thickness) are allowed within range and same pipe material
- angle: perpendicular + all angles between 90° and 45°
- 'eccentric to zero' position in opening is allowed

principle detail **Firetect®**

tested property	fire resistance
test method	EN 1366-3
service no.	24-40



**PE-Xa pipes**

service type <sup>1)</sup>		pipe insulation	EI	constructive element <sup>2)</sup>	Wrap	application	finish	max. opening	pipe end	max. angle	
dØ (mm)	s1 (mm)	min. 28 kg/m <sup>3</sup> eg Uponor			Firetect pipe wrap length π x Ø x no. of layers	1 or 2 sides	required	in construction	configuration		
Ø15/28	2,5	-	EI 240	rigid floors ≥ 150 mm	π x Ø x 1	1 side	*	32 mm	U/C + C/C	perpendicular + all angles between 90° and 45°	
		polyolefin 10mm	1200 CS + Cl	EI 240	rigid floors ≥ 150 mm	π x Ø x 2	1 side	*	63 mm		U/C + C/C
Ø16/25	2,2	-	EI 240	rigid floors ≥ 150 mm	π x Ø x 1	1 side	*	32 mm	U/C + C/C		
		polyolefin 10mm	1200 CS + Cl	EI 240	rigid floors ≥ 150 mm	π x Ø x 2	1 side	*	63 mm		U/C + C/C
<b>max.</b>											
Ø32/54	4,4	-	EI 240	rigid floors ≥ 150 mm	π x Ø x 1	1 side	*	63 mm	U/C + C/C		
		polyolefin 20mm	1200 CS + Cl	EI 240	rigid floors ≥ 150 mm	π x Ø x 2	1 side	*	102 mm	U/C + C/C	

\* smoke seal Acrylic on 2 sides

<sup>1)</sup> Penetration services must be supported; support distance ≤ 400mm.

<sup>3)</sup> Constructive element must be classified acc. EN 13501-2 for the required fire resistance period.