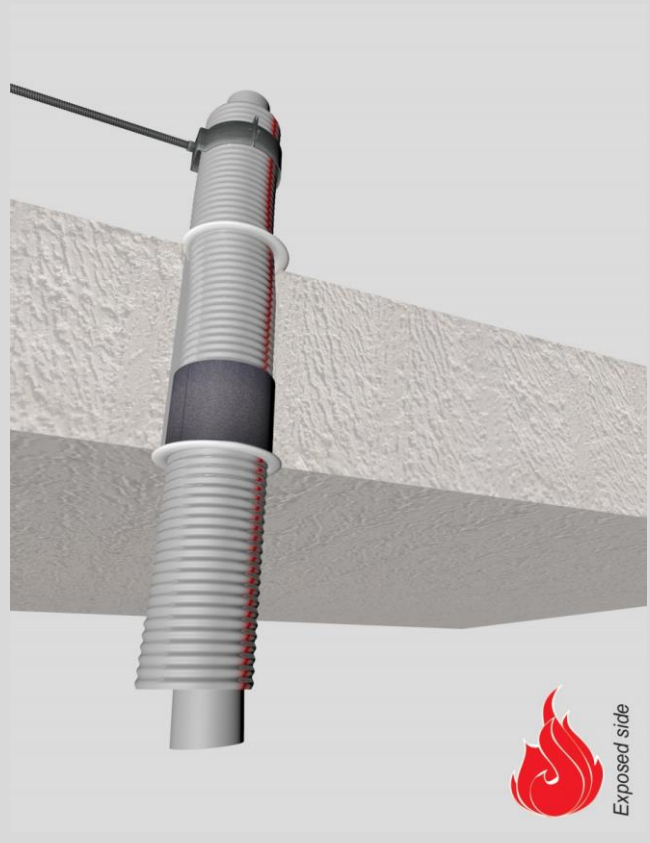


Notes:

- installation instructions in [TDS](#)
- apply smoke seal Firetect Acrylic on 2 sides
- **other pipe $d\varnothing + s1$** (thickness) are allowed within range and same pipe material
- angle: perpendicular + all angles between 90° and 45°
- 'eccentric to zero' position in opening is allowed

principle detail **Firetect®**

tested property	fire resistance
test method	EN 1366-3
service no.	24-37



PE-Xa pipes

service type ¹⁾		pipe insulation		EI	constructive element ²⁾	Firetect pipe wrap		application	finish required	max. opening in construction	pipe end configuration	max. angle	
dØ (mm)	s1 (mm)	min. 28 kg/m ³ eg Uponor				length	no. of layers						
Ø15/28	2,5	-		EI 240	rigid floors ≥ 150 mm	$\pi \times \varnothing \times$	1	1 side	*	32 mm	U/C + C/C	perpendicular + all angles between 90° and 45°	
		polyolefin 10mm	1200 CS + Cl	EI 240	rigid floors ≥ 150 mm	$\pi \times \varnothing \times$	2	1 side	*	63 mm	U/C + C/C		
Ø16/25	2,2	-		EI 240	rigid floors ≥ 150 mm	$\pi \times \varnothing \times$	1	1 side	*	32 mm	U/C + C/C		
		polyolefin 10mm	1200 CS + Cl	EI 240	rigid floors ≥ 150 mm	$\pi \times \varnothing \times$	2	1 side	*	63 mm	U/C + C/C		
max.													
Ø32/54	4,4	-		EI 240	rigid floors ≥ 150 mm	$\pi \times \varnothing \times$	1	1 side	*	63 mm	U/C + C/C		
		polyolefin 20mm	1200 CS + Cl	EI 240	rigid floors ≥ 150 mm	$\pi \times \varnothing \times$	2	1 side	*	102 mm	U/C + C/C		

* smoke seal Acrylic on 2 sides

¹⁾ Penetration services must be supported; support distance ≤ 400mm.

³⁾ Constructive element must be classified acc. EN 13501-2 for the required fire resistance period.