

**Notes:**

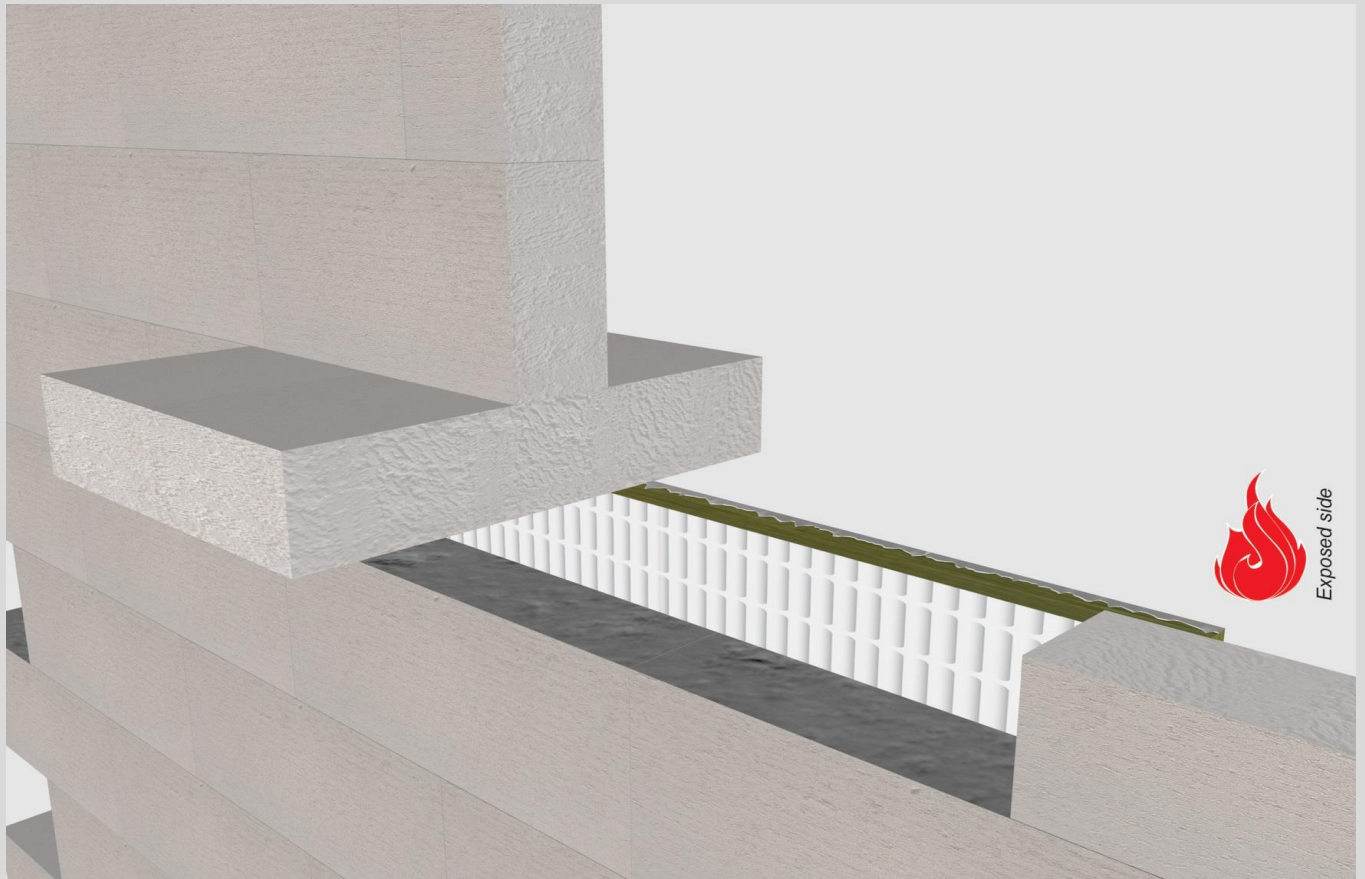
- installation instructions in [TDS](#)

**principle detail**



tested property  
test method  
service no.  
tested property  
test method

fire resistance  
EN 1366-3  
**23-54**  
smoke resistance  
EN 1634-3



**blank seals**

opening / gap / joint dimensions (mm)	EI	constructive element <sup>1)</sup>	<b>PA board</b> Firetect fire board type <b>2S</b> 50 mm	application	finish required	max. opening in construction
<b>max.</b> <a href="#">620 x 70 mm</a> 600 x 1200 mm + 25%	EI <b>120</b> EI <b>60</b>	flexible walls ≥ 100 mm flexible walls ≥ 100 mm	friction-fixed friction-fixed	2 sides 2 sides	* *	620 x 70 mm 600 x 1200 mm + 25%
<a href="#">100 x 900 mm, horizontal joint</a> 400 x 600 mm	EI <b>60</b> EI <b>120</b>	rigid walls ≥ 100 mm rigid walls ≥ 100 mm	<b>board strip <sup>2)</sup></b> friction-fixed	1 side, exp. 1 side	<sup>2)</sup> *	100x900 400 x 600 mm
<a href="#">100 x 900 mm, horizontal joint</a> 600 x 5000 mm 400 x 200 mm	EI <b>60</b> EI <b>60</b> EI <b>180</b>	rigid floors ≥ 150 mm rigid floors ≥ 150 mm rigid floors ≥ 150 mm	board strip <sup>3)</sup> friction-fixed friction-fixed	1 side 2 sides 2 sides	<sup>3)</sup> * *	100x900 600 x 5000 mm 400 x 200 mm

\* mount with Acrylic on 2 sides

<sup>1)</sup> Constructive element must be classified acc. EN 13501-2 for the required fire resistance period. EI for flexible walls ≥100mm is also applicable for rigid walls ≥100mm!

<sup>2)</sup> PA board strip min. height 200mm, max. length 900mm; finish top cross cut edge with Firetect PA coating, then mount with Conlit Fix adhesive onto wall.

<sup>3)</sup> PA board strip min. height 300mm, max. length 1100mm; mounted with Firetect Acrylic + screwed onto wall.