

Notes:

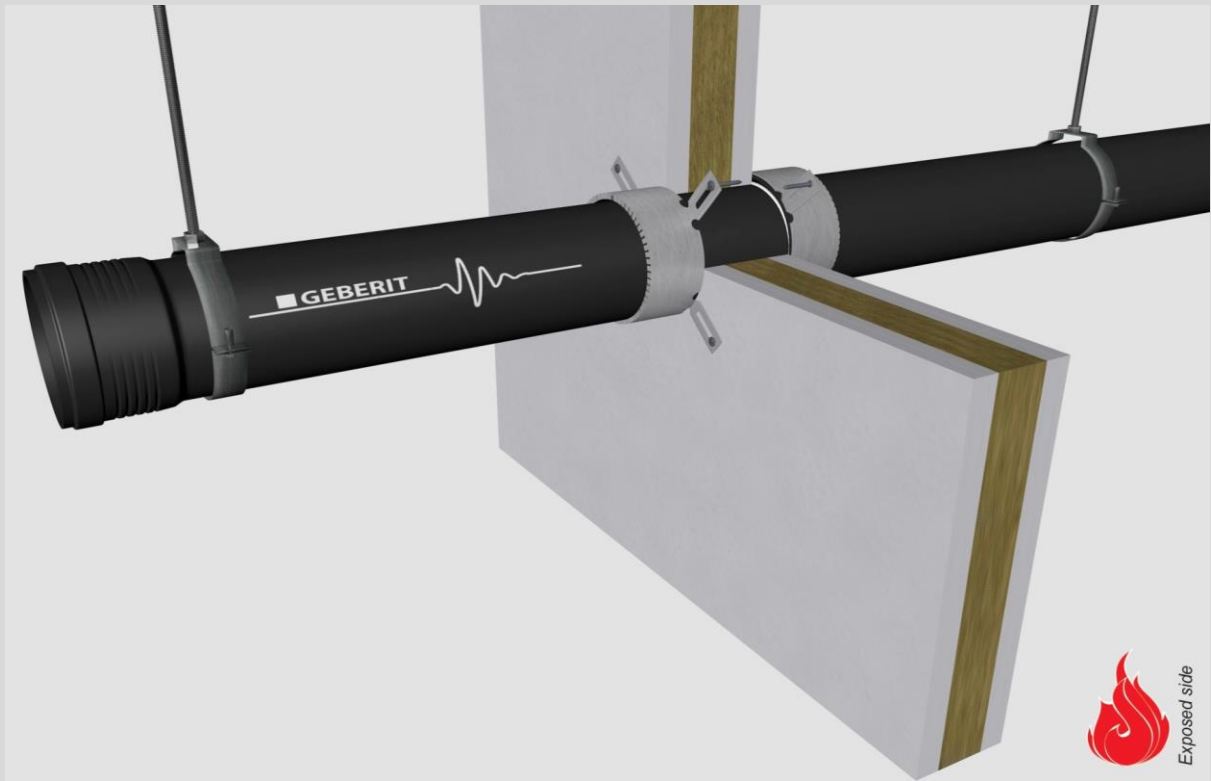
- installation instructions in [TDS](#)
- apply smoke seal Firetect Acrylic on 2 sides
- **other pipe dØ + s1** (thickness) are allowed within range and same pipe material
- EI for flexible walls ≥100mm is also applicable for **rigid walls** ≥100mm
- angle: perpendicular + all angles between 90° and 45°

principle detail

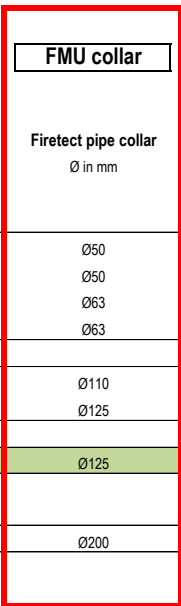
Firetect®

tested property
test method
service no.

fire resistance
EN 1366-3
23-36



PP-MX pipes



| service type ¹⁾ | | pipe socket | non-standard config. | EI | constructive element ²⁾ | Firetect pipe collar | application | finish | max. opening | pipe end configuration | max. angle |
|----------------------------|---------|------------------|------------------------|---------------|------------------------------------|----------------------|--------------|----------|-----------------|------------------------|---|
| dØ (mm) | s1 (mm) | exposed side | | | | Ø in mm | 1 or 2 sides | required | in construction | | |
| Ø50 | 2,7 | - | | EI 90 | flexible walls ≥ 100 mm | Ø50 | 2 sides | * | 50 mm | U/C + C/C | perpendicular + all angles between 90° and 45° |
| | | - | | EI 240 | rigid walls ≥ 150 mm | Ø50 | 2 sides | * | 50 mm | U/C + CC | |
| | | socket on 1 side | socket flush with wall | EI 120 | flexible walls ≥ 100 mm | Ø63 | 2 sides | * | 50 mm | U/C + C/C | |
| | | socket on 1 side | socket flush with wall | EI 240 | rigid walls ≥ 150 mm | Ø63 | 2 sides | * | 63 mm | U/C + CC | |
| Ø110 | 4,2 | - | | EI 90 | flexible walls ≥ 100 mm | Ø110 | 2 sides | * | 110 mm | U/C + C/C | |
| | | socket on 1 side | socket flush with wall | EI 90 | flexible walls ≥ 100 mm | Ø125 | 2 sides | * | 110 mm | U/C + C/C | |
| Ø125 | 4,7 | - | | EI 120 | flexible walls ≥ 100 mm | Ø125 | 2 sides | * | 125 mm | U/C + C/C | |
| max. | | | | | | | | | | | |
| Ø160 | 5,7 | socket on 1 side | socket flush with wall | EI 120 | flexible walls ≥ 100 mm | Ø200 | 2 sides | * | 160 mm | U/C + C/C | |

* smoke seal Acrylic on 2 sides

¹⁾ Penetration services must be supported; support distance ≤ 500mm.

²⁾ Constructive element must be classified acc. EN 13501-2 for the required fire resistance period. EI for flexible walls ≥100mm is also applicable for rigid walls ≥100mm!