

Notes:

- installation instructions in [TDS](#)
- apply joint seal in opening, flush with wall on 2 sides
- **other pipe dØ + s1** (thickness) are allowed within range and same pipe material
- EI for flexible walls ≥100mm is also applicable for **rigid walls** ≥100mm
- angle: perpendicular + all angles between 90° and 45°

principle detail

Firetect®

tested property

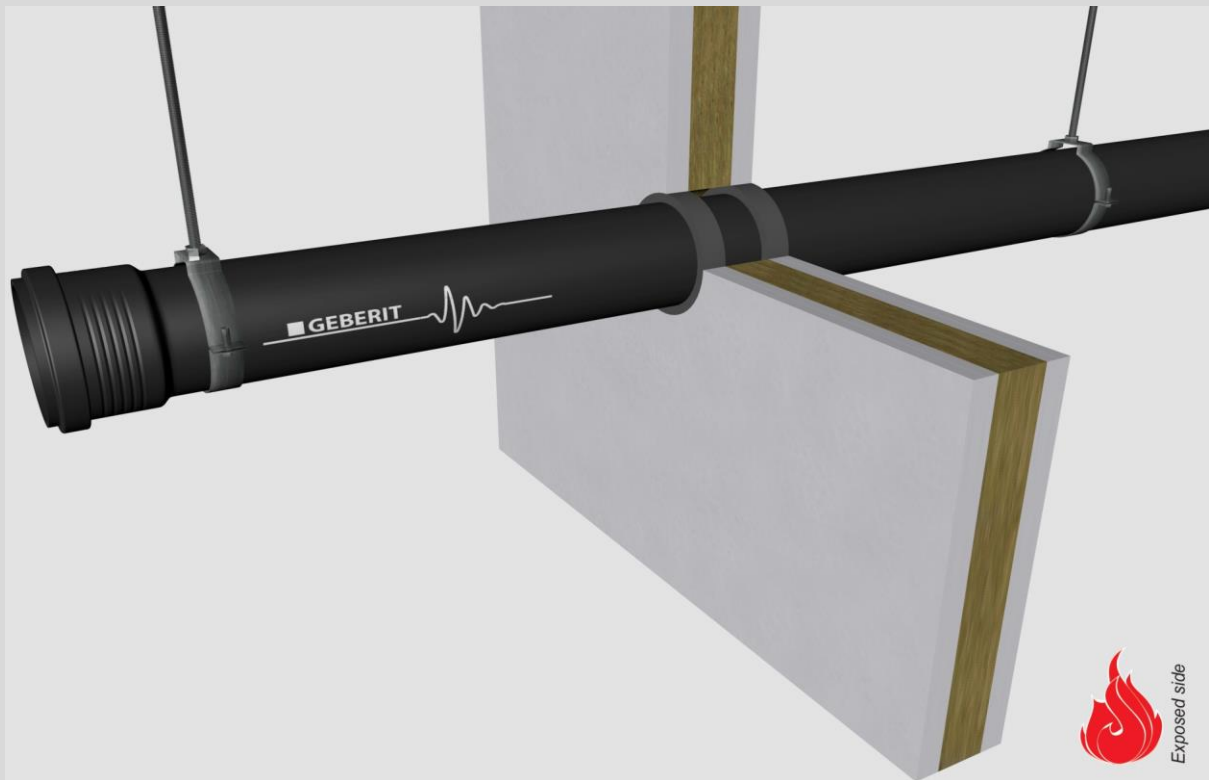
fire resistance

test method

EN 1366-3

service no.

23-33



PP-MX pipes

Graphite sealant

service type ¹⁾		pipe socket	non-standard config.	EI	constructive element ²⁾	Firetect joint seal		application	backing	max. opening	pipe end	max. angle
dØ (mm)	s1 (mm)	exposed side				width	depth	1 or 2 sides	required	in construction	configuration	
Ø50	2,7	-		EI 120	flexible walls ≥ 100 mm	10 mm	25 mm	2 sides	-	70 mm	U/C	perpendicular + all angles between 90° and 45°
		-		EI 240	rigid walls ≥ 150mm	10 mm	25 mm	2 sides	-	71 mm	U/C	
		socket on 1 side	socket flush with wall	EI 120	flexible walls ≥ 100 mm	10 mm	25 mm	2 sides	-	76 mm	U/C	
		socket on 1 side	socket flush with wall	EI 240	rigid walls ≥ 150mm	10 mm	25 mm	2 sides	-	71 mm	U/C	
max.												
Ø110	4,2	-		EI 90	flexible walls ≥ 100 mm	10 mm	25 mm	2 sides	-	130 mm	U/C	

¹⁾ Penetration services must be supported; support distance ≤ 500mm.

²⁾ Constructive element must be classified acc. EN 13501-2 for the required fire resistance period. EI for flexible walls ≥100mm is also applicable for rigid walls ≥100mm!