

Notes:

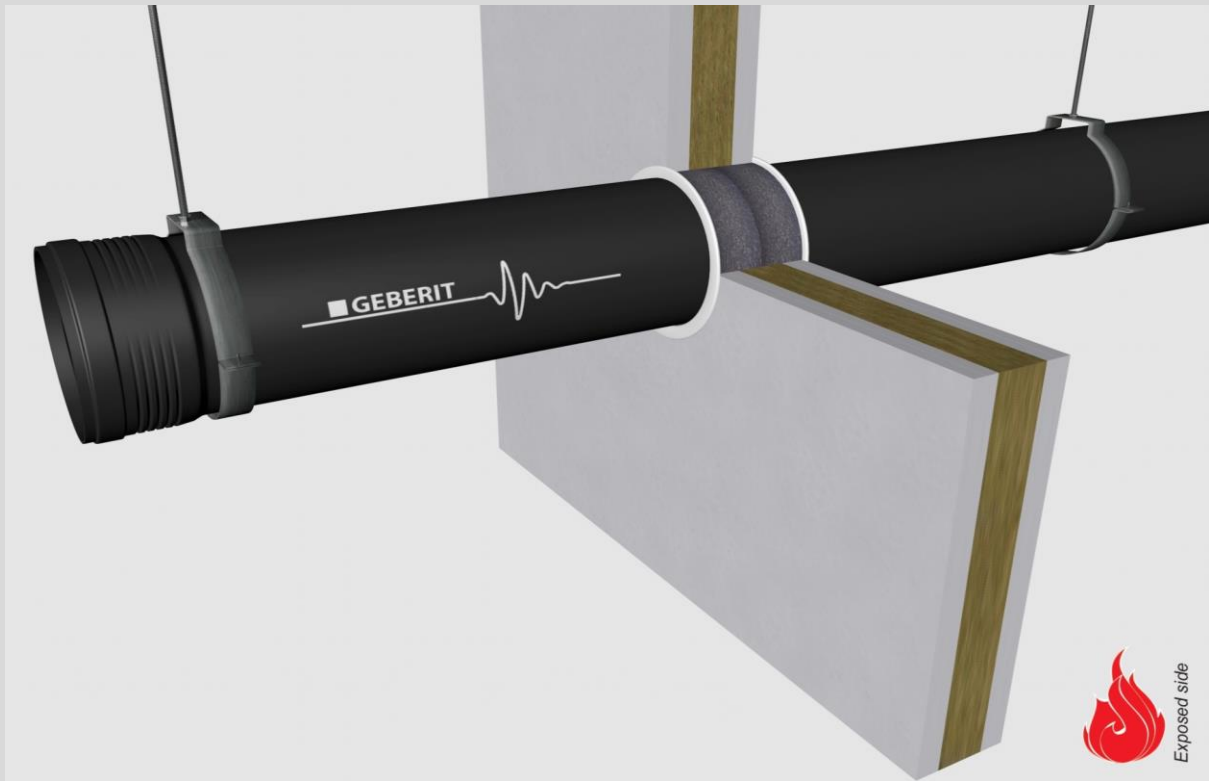
- installation instructions in [TDS](#)
- apply smoke seal Firetect Acrylic on 2 sides
- **other pipe dØ + s1** (thickness) are allowed within range and same pipe material
- EI for flexible walls ≥100mm is also applicable for **rigid walls** ≥100mm
- angle: perpendicular + all angles between 90° and 45°

principle detail

Firetect®

tested property
test method
service no.

fire resistance
EN 1366-3
23-25



PP-MX pipes

service type ¹⁾ dØ (mm) s1 (mm)	pipe socket exposed side	non-standard config.	EI	constructive element ²⁾	Wrap		application 1 or 2 sides	finish required	max. opening in construction	pipe end configuration	max. angle
					Firetect pipe wrap length π x Ø x	no. of layers					
Ø50 2,7	-	-	EI 120	flexible walls ≥ 100 mm	π x Ø x	2	2 sides	*	60 mm	U/C + C/C	perpendicular + all angles between 90° and 45°
	-	-	EI 240	rigid walls ≥ 150 mm	π x Ø x	2	2 sides	*	63 mm	U/C + C/C	
	socket on 1 side	socket flush with wall	EI 120	flexible walls ≥ 100 mm	π x Ø x	2	2 sides	*	64 mm	U/C + C/C	
	socket on 1 side	socket flush with wall	EI 240	rigid walls ≥ 150 mm	π x Ø x	2	2 sides	*	63 mm	U/C + C/C	
Ø110 4,2	-	-	EI 120	flexible walls ≥ 100 mm	π x Ø x	2	2 sides	*	121 mm	U/C + C/C	
	-	-	EI 120	rigid walls ≥ 150 mm	π x Ø x	2	2 sides	*	121 mm	U/C + C/C	
	socket on 1 side	socket flush with wall	EI 60	flexible walls ≥ 100 mm	π x Ø x	3	2 sides	*	130 mm	U/C + C/C	
	socket on 1 side	socket flush with wall	EI 60	rigid walls ≥ 150 mm	π x Ø x	3	2 sides	*	130 mm	U/C + C/C	
Ø125 4,7	-	-	EI 120	flexible walls ≥ 100 mm	π x Ø x	3	2 sides	*	137 mm	U/C + C/C	
	-	-	EI 120	rigid walls ≥ 150 mm	π x Ø x	3	2 sides	*	137 mm	U/C + C/C	
max.											
Ø160 5,7	-	-	EI 90	flexible walls ≥ 100 mm	π x Ø x	3	2 sides	*	172 mm	U/C + C/C	
	-	-	EI 90	rigid walls ≥ 150 mm	π x Ø x	3	2 sides	*	172 mm	U/C + C/C	
	socket on 1 side	socket flush with wall	EI 120	flexible walls ≥ 100 mm	π x Ø x	3	2 sides	*	178 mm	U/C + C/C	
	socket on 1 side	socket flush with wall	EI 120	rigid walls ≥ 150 mm	π x Ø x	3	2 sides	*	178 mm	U/C + C/C	

* smoke seal Acrylic on 2 sides

¹⁾ Penetration services must be supported; support distance ≤ 500mm.

²⁾ Constructive element must be classified acc. EN 13501-2 for the required fire resistance period. EI for flexible walls ≥100mm is also applicable for rigid walls ≥100mm!