

**Notes:**

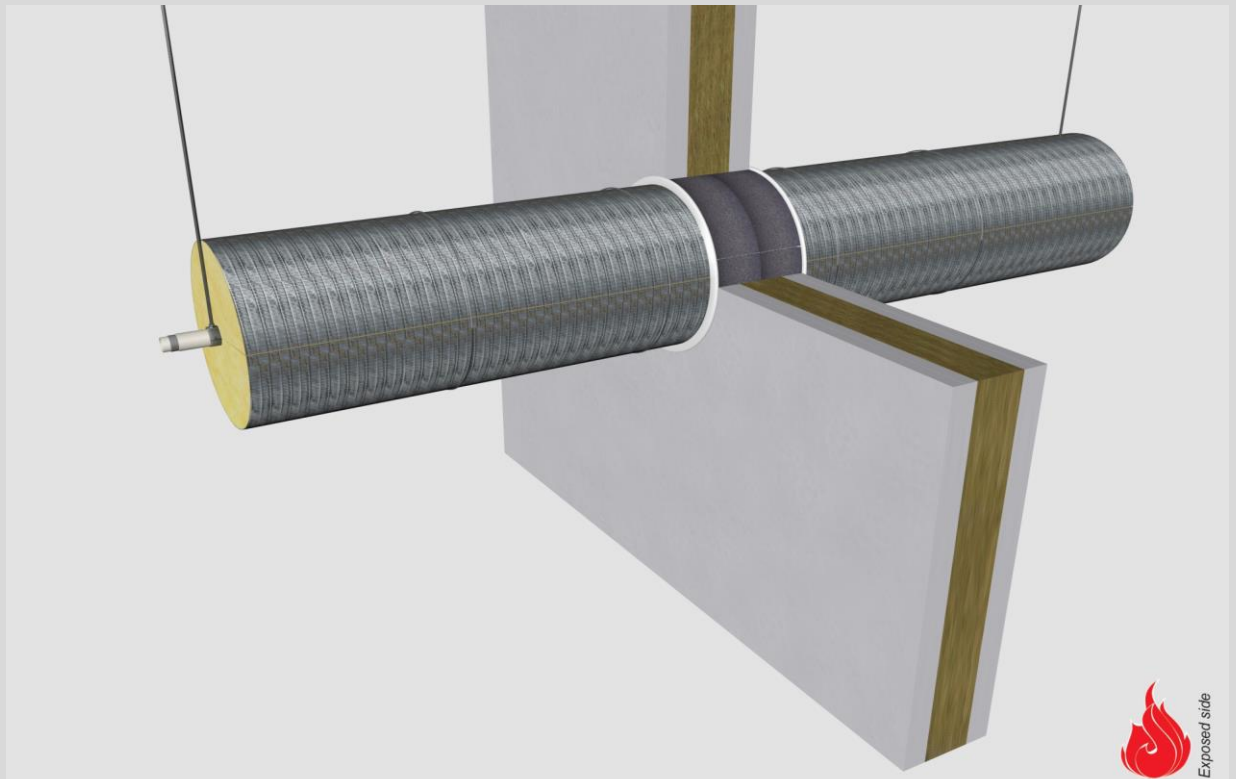
- installation instructions in [TDS](#)
- apply smoke seal Firetect Acrylic on 2 sides
- **other pipe dØ + s1** (thickness) are allowed within range and same pipe material
- EI for flexible walls ≥100mm is also applicable for **rigid walls** ≥100mm
- angle: perpendicular + all angles between 90° and 45°

**principle detail**



tested property  
test method  
service no.

fire resistance  
EN 1366-3  
**23-2**



**aluPE-X pipes**

service type <sup>1)</sup> dØ (mm)	s1 (mm)	pipe insulation <sup>2)</sup> min. 75 kg/m <sup>3</sup> eg Climpipe, Rockwool or U Protect Pipe Section Alu2	EI	constructive element <sup>3)</sup>	Wrap		application	finish required	max. opening in construction	pipe end configuration	max. angle		
					Firetect pipe wrap length π x Ø x	no. of layers							
Ø16	2,0	glass / rock wool 20mm	1200 CS + CI	EI 120	flexible walls ≥ 100 mm	TT x Ø x	1	2 sides	*	60 mm	U/C + C/C	perpendicular + all angles between 90° and 45°	
			20mm 1200 CS + CI	EI 240	rigid walls ≥ 150 mm	TT x Ø x	2	2 sides	*	64 mm	U/C + C/C		
	30mm	1200 CS + CI	1200 CS + CI	EI 120	flexible walls ≥ 100 mm	TT x Ø x	1	2 sides	*	80 mm	U/C + C/C		
			1200 CS + CI	EI 240	rigid walls ≥ 150 mm	TT x Ø x	2	2 sides	*	84 mm	U/C + C/C		
	40mm	1200 CS + CI	1200 CS + CI	EI 120	flexible walls ≥ 100 mm	TT x Ø x	1	2 sides	*	100 mm	U/C + C/C		
			1200 CS + CI	EI 240	rigid walls ≥ 150 mm	TT x Ø x	2	2 sides	*	104 mm	U/C + C/C		
	50mm	1200 CS + CI	1200 CS + CI	EI 120	flexible walls ≥ 100 mm	TT x Ø x	2	2 sides	*	124 mm	U/C + C/C		
			1200 CS + CI	EI 240	rigid walls ≥ 150 mm	TT x Ø x	2	2 sides	*	124 mm	U/C + C/C		
	60mm	00 LI + CS + CI	1200 CS + CI	EI 120	flexible walls ≥ 100 mm	TT x Ø x	3	2 sides	*	148 mm	U/C + C/C		
			1200 CS + CI	EI 120	rigid walls ≥ 150 mm	TT x Ø x	3	2 sides	*	148 mm	U/C + C/C		
	80mm	00 LI + CS + CI	1200 CS + CI	EI 120	flexible walls ≥ 100 mm	TT x Ø x	3	2 sides	*	188 mm	U/C + C/C		
			1200 CS + CI	EI 120	rigid walls ≥ 150 mm	TT x Ø x	3	2 sides	*	188 mm	U/C + C/C		
	max.	7,5	glass / rock wool 20mm	1200 CS + CI	EI 120	flexible walls ≥ 100 mm	TT x Ø x	1	2 sides	*	119 mm		U/C + C/C
				20mm 1200 CS + CI	EI 240	rigid walls ≥ 150 mm	TT x Ø x	2	2 sides	*	123 mm		U/C + C/C
30mm		1200 CS + CI	1200 CS + CI	EI 120	flexible walls ≥ 100 mm	TT x Ø x	1	2 sides	*	139 mm	U/C + C/C		
			1200 CS + CI	EI 240	rigid walls ≥ 150 mm	TT x Ø x	2	2 sides	*	143 mm	U/C + C/C		
40mm		1200 CS + CI	1200 CS + CI	EI 120	flexible walls ≥ 100 mm	TT x Ø x	1	2 sides	*	159 mm	U/C + C/C		
			1200 CS + CI	EI 240	rigid walls ≥ 150 mm	TT x Ø x	2	2 sides	*	163 mm	U/C + C/C		
50mm		1200 CS + CI	1200 CS + CI	EI 120	flexible walls ≥ 100 mm	TT x Ø x	2	2 sides	*	183 mm	U/C + C/C		
			1200 CS + CI	EI 240	rigid walls ≥ 150 mm	TT x Ø x	2	2 sides	*	183 mm	U/C + C/C		
60mm		1200 CS + CI	1200 CS + CI	EI 120	flexible walls ≥ 100 mm	TT x Ø x	3	2 sides	*	207 mm	U/C + C/C		
			1200 CS + CI	EI 240	rigid walls ≥ 150 mm	TT x Ø x	3	2 sides	*	207 mm	U/C + C/C		
80mm	1200 CS + CI	1200 CS + CI	EI 120	flexible walls ≥ 100 mm	TT x Ø x	3	2 sides	*	247 mm	U/C + C/C			
		1200 CS + CI	EI 240	rigid walls ≥ 150 mm	TT x Ø x	3	2 sides	*	247 mm	U/C + C/C			

\* smoke seal Acrylic on 2 sides

<sup>1)</sup> Penetration services must be supported; support distance ≤ 500mm.

<sup>2)</sup> Pipe insulation must be fastened individually (not wrapped!) with steel wire: at max. 50mm + 300mm from constructive element.

<sup>3)</sup> Constructive element must be classified acc. EN 13501-2 for the required fire resistance period. EI for flexible walls ≥100mm is also applicable for rigid walls ≥100mm!