

**Notes:**

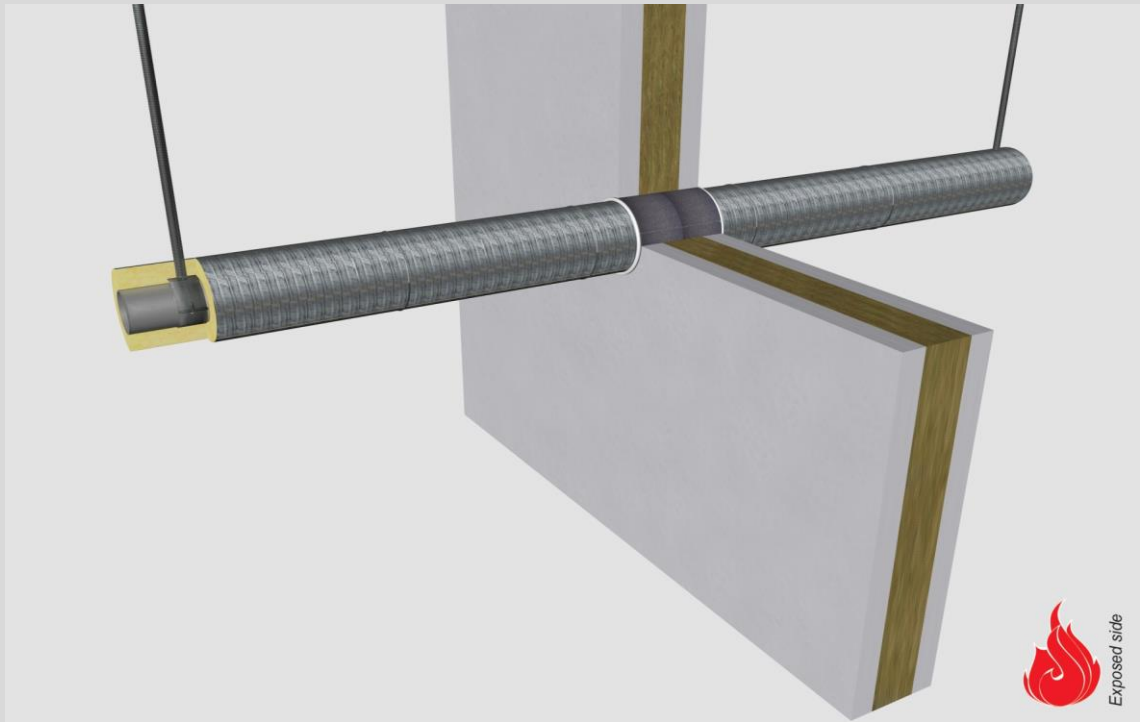
- installation instructions in [TDS](#)
- apply smoke seal Firetect Acrylic on 2 sides
- **other pipe dØ + s1** (thickness) are allowed within range and same pipe material
- EI for flexible walls ≥100mm is also applicable for **rigid walls** ≥100mm
- angle: perpendicular + all angles between 90° and 45°

**principle detail**



tested property  
test method  
service no.

fire resistance  
EN 1366-3  
21-19



**steel pipes**

**Wrap**

service type <sup>1)</sup> dØ (mm)	s1 (mm)	pipe insulation <sup>2)</sup> min. 75 kg/m <sup>3</sup> eg Climpipe, Rockwool or U Protect Pipe Section Alu2	EI	constructive element <sup>3)</sup>	Firetect pipe wrap		application 1 or 2 sides	finish required	max. opening in construction	pipe end configuration	max. angle	
					length π x Ø x	no. of layers						
Ø8	1,0	PA coating	200 LI	EI 90	flexible walls ≥ 100 mm	-	-	2 sides	-	8 mm	C/U + U/C + CC	perpendicular + all angles between 90° and 45°
Ø15	1,0	glass / rock wool 20mm	1200 CS + CI	EI 120	flexible walls ≥ 100 mm	π x Ø x	1	2 sides	*	59 mm	C/U + U/C + CC	
		22mm	1200 CS + CI	EI 180	rigid walls ≥ 150 mm	π x Ø x	1	2 sides	*	63 mm	C/U + U/C + CC	
		30mm	1200 CS + CI	EI 240	rigid walls ≥ 150 mm	π x Ø x	2	2 sides	*	83 mm	U/C + C/C	
		40mm	1200 CS + CI	EI 240	rigid walls ≥ 150 mm	TT x Ø x	2	2 sides	*	103 mm	U/C + C/C	
50mm	1200 CS + CI	EI 240	rigid walls ≥ 150 mm	TT x Ø x	2	2 sides	*	123 mm	U/C + C/C			
										60mm	200 LI + CS + CI	
60mm	1200 CS + CI	EI 120	rigid walls ≥ 150 mm	TT x Ø x	3	2 sides	*	147 mm	U/C + C/C			
										80mm	200 LI + CS + CI	
80mm	1200 CS + CI	EI 120	rigid walls ≥ 150 mm	TT x Ø x	3	2 sides	*	202 mm	U/C + C/C			
										Ø22	1,1	
30mm	1200 CS + CI	EI 180	rigid walls ≥ 150 mm	π x Ø x	1	2 sides	*	86 mm	C/U + U/C + CC			
										Ø35	1,5	
30mm	1200 CS + CI	EI 180	rigid walls ≥ 150 mm	π x Ø x	1	2 sides	*	99 mm	C/U + U/C + CC			
										Ø42.2	3,25	
20mm	1200 CS + CI	EI 240	rigid walls ≥ 150 mm	TT x Ø x	2	2 sides	*	102 mm	C/U + U/C + C/C			
30mm	1200 CS + CI	EI 240	rigid walls ≥ 150 mm	TT x Ø x	2	2 sides	*	110 mm	C/U + U/C + C/C			
40mm	1200 CS + CI	EI 240	rigid walls ≥ 150 mm	TT x Ø x	2	2 sides	*	130mm	C/U + U/C + C/C			

>> contined on page 2

\* smoke seal Acrylic on 2 sides

<sup>1)</sup> Penetration services must be supported; support distance ≤ 500mm.

<sup>2)</sup> Pipe insulation must be fastened individually (not wrapped!) with steel wire; at max. 50mm + 300mm from constructive element.

<sup>3)</sup> Constructive element must be classified acc. EN 13501-2 for the required fire resistance period. EI for flexible walls ≥100mm is also applicable for rigid walls ≥100mm!

**Notes:**

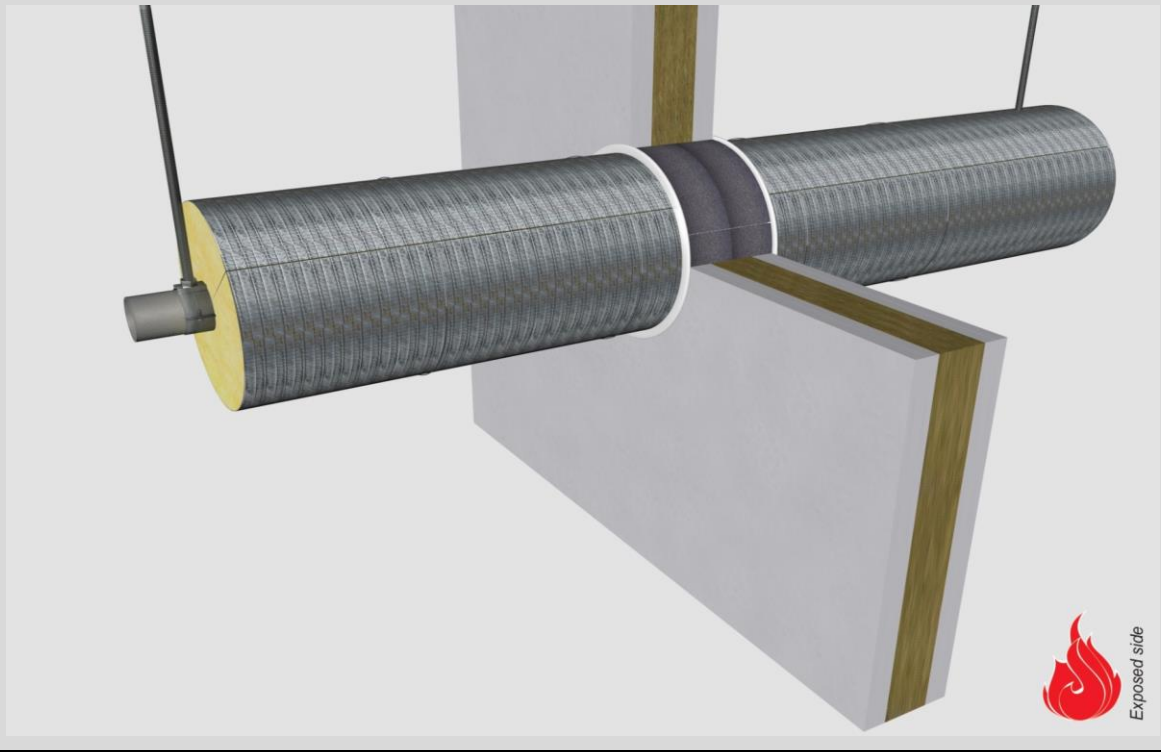
- installation instructions in [TDS](#)
- apply smoke seal Firetect Acrylic on 2 sides
- **other pipe dØ + s1** (thickness) are allowed within range and same pipe material
- EI for flexible walls ≥100mm is also applicable for **rigid walls** ≥100mm
- angle: perpendicular + all angles between 90° and 45°

**principle detail**



tested property  
test method  
service no.

fire resistance  
EN 1366-3  
23-1



**steel pipes**

**Wrap**

service type <sup>1)</sup> dØ (mm)	s1 (mm)	pipe insulation <sup>2)</sup> min. 75 kg/m <sup>3</sup> eg Climpipe, Rockwool or U Protect Pipe Section Alu2	EI	constructive element <sup>3)</sup>	Firetect pipe wrap length π x Ø x no. of layers	application 1 or 2 sides	finish required	max. opening in construction	pipe end configuration	max. angle	
Ø42,2	3,25	glass / rock wool 50mm	1200 CS + CI	EI 120	flexible walls ≥ 100 mm	π x Ø x 2	2 sides	*	150 mm	C/U + U/C + CC	perpendicular + all angles between 90° and 45°
		50mm	1200 CS + CI	EI 240	rigid walls ≥ 150 mm	TT x Ø x 2	2 sides	*	150 mm	C/U + U/C + C/C	
	80mm	60mm	1200 CS + CI	EI 60	flexible walls ≥ 100 mm	π x Ø x 3	2 sides	*	174 mm	C/U + U/C + CC	
		60mm	1200 CS + CI	EI 180	rigid walls ≥ 150 mm	TT x Ø x 3	2 sides	*	174 mm	C/U + U/C + C/C	
		200 LI + CS + CI	EI 60	flexible walls ≥ 100 mm	π x Ø x 3	2 sides	*	214 mm	C/U + U/C + CC		
		1200 CS + CI	EI 180	rigid walls ≥ 150 mm	TT x Ø x 3	2 sides	*	220 mm	C/U + U/C + C/C		
Ø76	2,1	glass / rock wool 20mm	1200 CS + CI	EI 90	flexible walls ≥ 100 mm	π x Ø x 2	2 sides	*	124 mm	C/U + U/C + CC	
		20mm	1200 CS + CI	EI 240	rigid walls ≥ 150 mm	TT x Ø x 2	2 sides	*	132 mm	U/C + C/C	
	80mm	30mm	1200 CS + CI	EI 90	flexible walls ≥ 100 mm	π x Ø x 2	2 sides	*	144 mm	C/U + U/C + CC	
		30mm	1200 CS + CI	EI 120	rigid walls ≥ 150 mm	TT x Ø x 2	2 sides	*	144 mm	U/C + C/C	
		40mm	1200 CS + CI	EI 90	flexible walls ≥ 100 mm	π x Ø x 1	2 sides	*	160 mm	C/U + U/C + CC	
		40mm	1200 CS + CI	EI 120	rigid walls ≥ 150 mm	TT x Ø x 1	2 sides	*	164 mm	U/C + C/C	
		50mm	1200 CS + CI	EI 90	flexible walls ≥ 100 mm	π x Ø x 2	2 sides	*	184 mm	C/U + U/C + CC	
		50mm	1200 CS + CI	EI 120	rigid walls ≥ 150 mm	TT x Ø x 2	2 sides	*	202 mm	U/C + C/C	
		60mm	1200 CS + CI	EI 90	flexible walls ≥ 100 mm	π x Ø x 3	2 sides	*	208 mm	C/U + U/C + CC	
		60mm	1200 CS + CI	EI 120	rigid walls ≥ 150 mm	TT x Ø x 3	2 sides	*	208 mm	U/C + C/C	
		80mm	1200 CS + CI	EI 90	flexible walls ≥ 100 mm	π x Ø x 3	2 sides	*	248 mm	C/U + U/C + CC	
		80mm	1200 CS + CI	EI 120	rigid walls ≥ 150 mm	TT x Ø x 3	2 sides	*	248 mm	U/C + C/C	
<b>max.</b> Ø219,1	4,5	glass / rock wool 20mm	1200 CS + CI	EI 60	flexible walls ≥ 100 mm	π x Ø x 1	2 sides	*	263 mm	C/U + U/C + CC	
		30mm	1200 CS + CI	EI 60	flexible walls ≥ 100 mm	π x Ø x 1	2 sides	*	283 mm	C/U + U/C + CC	
		40mm	1200 CS + CI	EI 120	flexible walls ≥ 100 mm	π x Ø x 1	2 sides	*	303 mm	C/U + U/C + CC	
		50mm	1200 CS + CI	EI 120	flexible walls ≥ 100 mm	π x Ø x 2	2 sides	*	327 mm	C/U + U/C + CC	
		60mm	1200 CS + CI	EI 90	flexible walls ≥ 100 mm	π x Ø x 3	2 sides	*	351 mm	C/U + U/C + CC	
		80mm	1200 CS + CI	EI 90	flexible walls ≥ 100 mm	π x Ø x 3	2 sides	*	391 mm	C/U + U/C + CC	

\* smoke seal Acrylic on 2 sides

<sup>1)</sup> Penetration services must be supported; support distance ≤ 500mm.

<sup>2)</sup> Pipe insulation must be fastened individually (not wrapped!) with steel wire: at max. 50mm + 300mm from constructive element.

<sup>3)</sup> Constructive element must be classified acc. EN 13501-2 for the required fire resistance period. EI for flexible walls ≥100mm is also applicable for rigid walls ≥100mm!