

Notes:

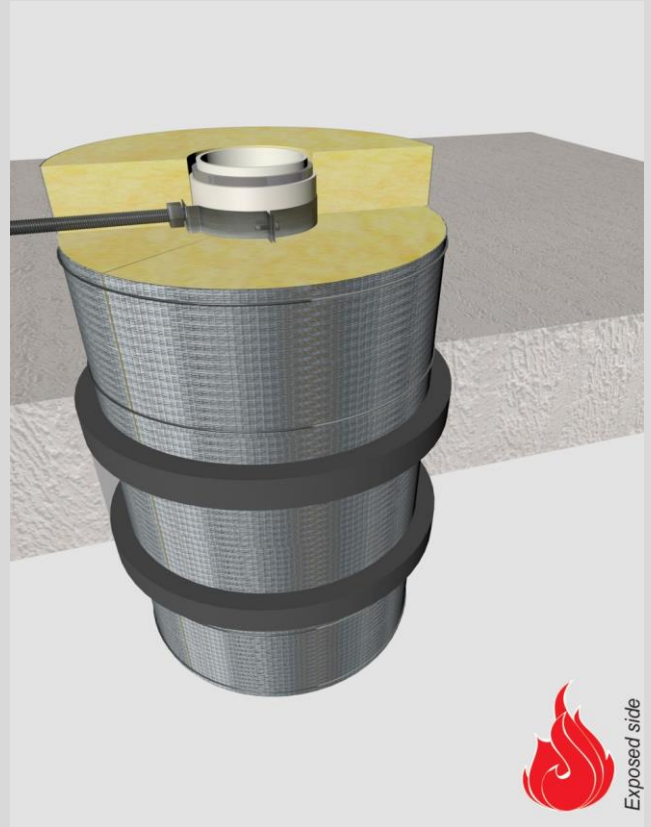
- installation instructions in [TDS](#)
- apply joint seal in opening, flush with floor on 2 sides
- **other pipe dØ + s1** (thickness) are allowed within range and same pipe material
- angle: perpendicular + all angles between 90° and 45°

principle detail

Firetect®

tested property
test method
service no.

fire resistance
EN 1366-3
22-9



aluPE-X pipes

Graphite sealant

service type ¹⁾ dØ (mm)	pipe insulation ²⁾ s1 (mm)	pipe insulation ²⁾ min. 75 kg/m ³ eg Climpipe, Rockwool or U Protect Pipe Section Alu2	EI	constructive element ³⁾	Firetect joint seal		application	backing required	max. opening in construction	pipe end configuration	max. angle	
					width	depth						
Ø16	2,0	glass / rock wool 20mm	1200 CS + CI	EI 240	rigid floors ≥ 150 mm	15 mm	25 mm	2 sides	-	86 mm	U/C + C/C	perpendicular + all angles between 90° and 45°
		30mm	1200 CS + CI	EI 240	rigid floors ≥ 150 mm	15 mm	25 mm	2 sides	-	106 mm	U/C + C/C	
		40mm	1200 CS + CI	EI 240	rigid floors ≥ 150 mm	15 mm	25 mm	2 sides	-	126 mm	U/C + C/C	
		50mm	1200 CS + CI	EI 240	rigid floors ≥ 150 mm	15 mm	25 mm	2 sides	-	146 mm	U/C + C/C	
		60mm	1200 CS + CI	EI 240	rigid floors ≥ 150 mm	15 mm	25 mm	2 sides	-	166 mm	U/C + C/C	
80mm	1200 CS + CI	EI 240	rigid floors ≥ 150 mm	15 mm	25 mm	2 sides	-	220 mm	U/C + C/C			
max.												
Ø75	7,5	glass / rock wool 20mm	1200 CS + CI	EI 240	rigid floors ≥ 150 mm	15 mm	25 mm	2 sides	-	150 mm	U/C + C/C	
		30mm	1200 CS + CI	EI 240	rigid floors ≥ 150 mm	15 mm	25 mm	2 sides	-	165 mm	U/C + C/C	
		40mm	1200 CS + CI	EI 240	rigid floors ≥ 150 mm	15 mm	25 mm	2 sides	-	185 mm	U/C + C/C	
		50mm	1200 CS + CI	EI 240	rigid floors ≥ 150 mm	15 mm	25 mm	2 sides	-	205 mm	U/C + C/C	
		60mm	1200 CS + CI	EI 240	rigid floors ≥ 150 mm	15 mm	25 mm	2 sides	-	225 mm	U/C + C/C	
80mm	1200 CS + CI	EI 240	rigid floors ≥ 150 mm	15 mm	25 mm	2 sides	-	265 mm	U/C + C/C			

¹⁾ Penetration services must be supported; support distance ≤ 400mm.

²⁾ Pipe insulation must be fastened individually (not wrapped!) with steel wire: at max. 50mm + 300mm from constructive element.

³⁾ Constructive element must be classified acc. EN 13501-2 for the required fire resistance period.