

Notes:

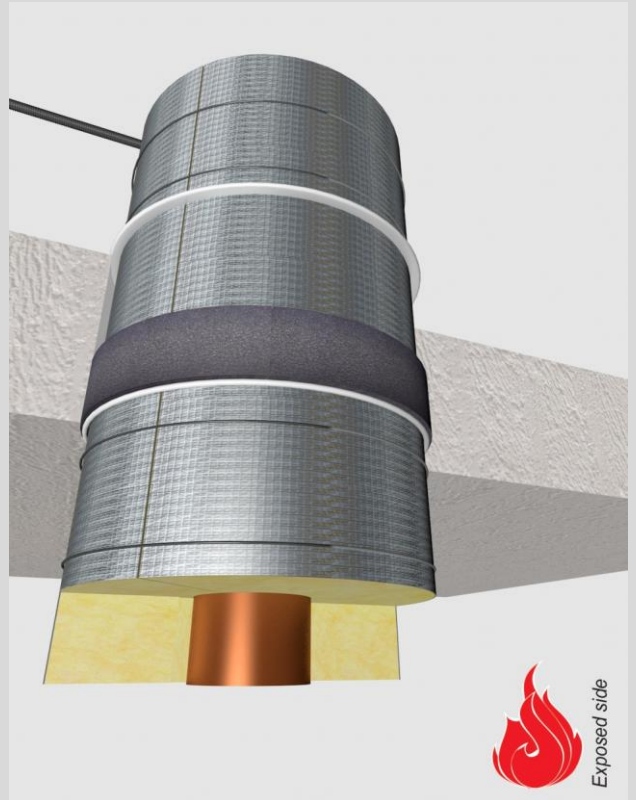
- installation instructions in [TDS](#)
- apply smoke seal Firetect Acrylic on 2 sides
- **other pipe dØ + s1** (thickness) are allowed within range and same pipe material
- angle: perpendicular + all angles between 90° and 45°

principle detail



tested property
test method
service no.

fire resistance
EN 1366-3
22-7



copper pipes

service type ¹⁾ pipe insulation ²⁾
dØ (mm) s1 (mm) min. 75 kg/m³ eg Climpipe, Rockwool
or U Protect Pipe Section Alu2



EI

constructive element ³⁾

Wrap

Firetect pipe wrap
length
π x Ø x
no. of layers

application
1 or 2 sides

finish
required

max. opening
in construction

pipe end
configuration

max. angle

| Ø | s1 | insulation | CS + CI | EI | rigid floors | Wrap | application | finish | max. opening | pipe end | max. angle | |
|--------------|---------------|------------------------|--------------|---------------|-----------------------|-----------|-------------|--------|--------------|-----------------|--|--|
| Ø15 | 1,0 | glass / rock wool 20mm | 1200 CS + CI | EI 240 | rigid floors ≥ 150 mm | π x Ø x 2 | 1 side | * | 63 mm | U/C + C/C | perpendicular + all angles between 90° and 45° | |
| | | | 1200 CS + CI | EI 180 | rigid floors ≥ 150 mm | π x Ø x 1 | 1 side | * | 63 mm | C/U + U/C + C/C | | |
| | | | 1200 CS + CI | EI 240 | rigid floors ≥ 150 mm | π x Ø x 2 | 1 side | * | 83 mm | U/C + C/C | | |
| | | | 1200 CS + CI | EI 180 | rigid floors ≥ 150 mm | π x Ø x 1 | 1 side | * | 63 mm | C/U + U/C + C/C | | |
| | | | 1200 CS + CI | EI 240 | rigid floors ≥ 150 mm | π x Ø x 2 | 1 side | * | 103 mm | U/C + C/C | | |
| | | | 1200 CS + CI | EI 240 | rigid floors ≥ 150 mm | π x Ø x 2 | 1 side | * | 123 mm | U/C + C/C | | |
| | | | 1200 CS + CI | EI 120 | rigid floors ≥ 150 mm | π x Ø x 3 | 1 side | * | 147 mm | U/C + C/C | | |
| 1200 CS + CI | EI 120 | rigid floors ≥ 150 mm | π x Ø x 3 | 1 side | * | 202 mm | U/C + C/C | | | | | |
| Ø22 | 1,1 | glass / rock wool 22mm | 1200 CS + CI | EI 180 | rigid floors ≥ 150 mm | π x Ø x 1 | 1 side | * | 86 mm | C/U + U/C + C/C | | |
| | | | 1200 CS + CI | EI 180 | rigid floors ≥ 150 mm | π x Ø x 1 | 1 side | * | 86 mm | C/U + U/C + C/C | | |
| Ø35 | 1,5 | glass / rock wool 22mm | 1200 CS + CI | EI 180 | rigid floors ≥ 150 mm | π x Ø x 1 | 1 side | * | 99 mm | C/U + U/C + C/C | | |
| | | | 1200 CS + CI | EI 180 | rigid floors ≥ 150 mm | π x Ø x 1 | 1 side | * | 99 mm | C/U + U/C + C/C | | |
| max. | | | | | | | | | | | | |
| Ø76 | 2,1 | glass / rock wool 20mm | 1200 CS + CI | EI 240 | rigid floors ≥ 150 mm | π x Ø x 2 | 1 side | * | 132 mm | U/C + C/C | | |
| | | | 1200 CS + CI | EI 120 | rigid floors ≥ 150 mm | π x Ø x 2 | 1 side | * | 144 mm | U/C + C/C | | |
| | | | 1200 CS + CI | EI 120 | rigid floors ≥ 150 mm | π x Ø x 2 | 1 side | * | 164 mm | U/C + C/C | | |
| | | | 1200 CS + CI | EI 120 | rigid floors ≥ 150 mm | π x Ø x 2 | 1 side | * | 202 mm | U/C + C/C | | |
| | | | 1200 CS + CI | EI 120 | rigid floors ≥ 150 mm | π x Ø x 3 | 1 side | * | 208 mm | U/C + C/C | | |
| | | | 1200 CS + CI | EI 120 | rigid floors ≥ 150 mm | π x Ø x 3 | 1 side | * | 248 mm | U/C + C/C | | |

* smoke seal Acrylic on 2 sides

¹⁾ Penetration services must be supported; support distance ≤ 400mm.

²⁾ Pipe insulation must be fastened individually (not wrapped!) with steel wire: at max. 50mm + 300mm from constructive element.

³⁾ Constructive element must be classified acc. EN 13501-2 for the required fire resistance period.