

Notes:

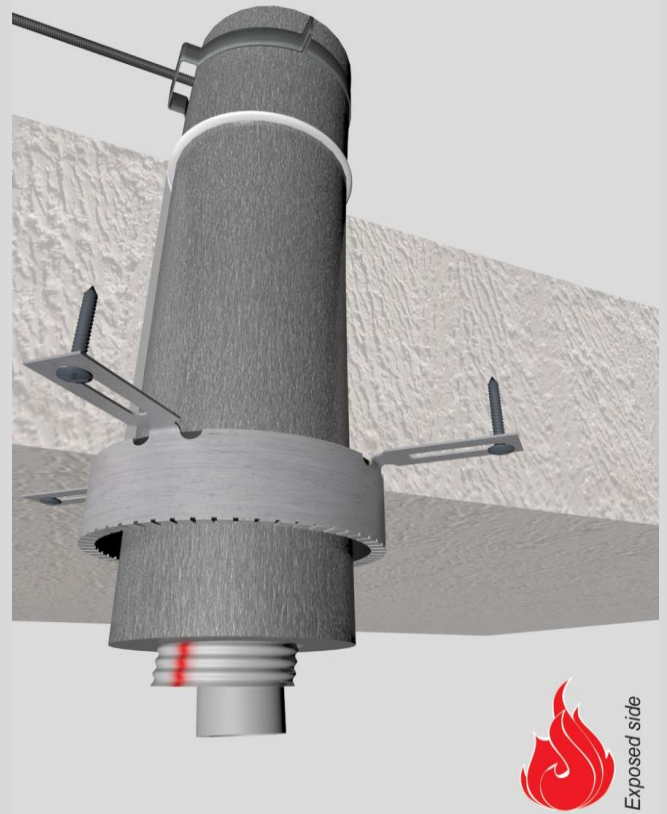
- installation instructions in [TDS](#)
- apply smoke seal Firetect Acrylic on 2 sides
- **other pipe dØ + s1** (thickness) are allowed within range and same pipe material
- angle: perpendicular + all angles between 90° and 45°
- 'eccentric to zero' position in opening is allowed

principle detail

Firetect®

tested property
test method
service no.

fire resistance
EN 1366-3
22-46



PE-Xa pipes

FMU collar

service type ¹⁾		pipe insulation		EI	constructive element ²⁾	Firetect pipe collar Ø in mm	application	finish required	max. opening in construction	pipe end configuration	max. angle
dØ (mm)	s1 (mm)	min. 28 kg/m ³ eg Uponor									
Ø15/28	2,5	-		EI 240	rigid floors ≥ 150 mm	Ø40	1 side	*	32 mm	U/C + C/C	perpendicular + all angles between 90° and 45°
		polyolefin 10mm	1200 CS + CI	EI 120	rigid floors ≥ 150 mm	Ø50	1 side	*	50 mm	U/C + C/C	
Ø16/25	2,2	-		EI 240	rigid floors ≥ 150 mm	Ø40	1 side	*	26 mm	U/C + C/C	
		polyolefin 10mm	1200 CS + CI	EI 120	rigid floors ≥ 150 mm	Ø50	1 side	*	50 mm	U/C + C/C	
max.											
Ø32/54	4,4	-		EI 240	rigid floors ≥ 150 mm	Ø63	1 side	*	63 mm	U/C + C/C	
		polyolefin 20mm	1200 CS + CI	EI 240	rigid floors ≥ 150 mm	Ø110	1 side	*	102 mm	U/C + C/C	

* smoke seal Acrylic on 2 sides

¹⁾ Penetration services must be supported; support distance ≤ 400mm.

²⁾ Constructive element must be classified acc. EN 13501-2 for the required fire resistance period.