

**Notes:**

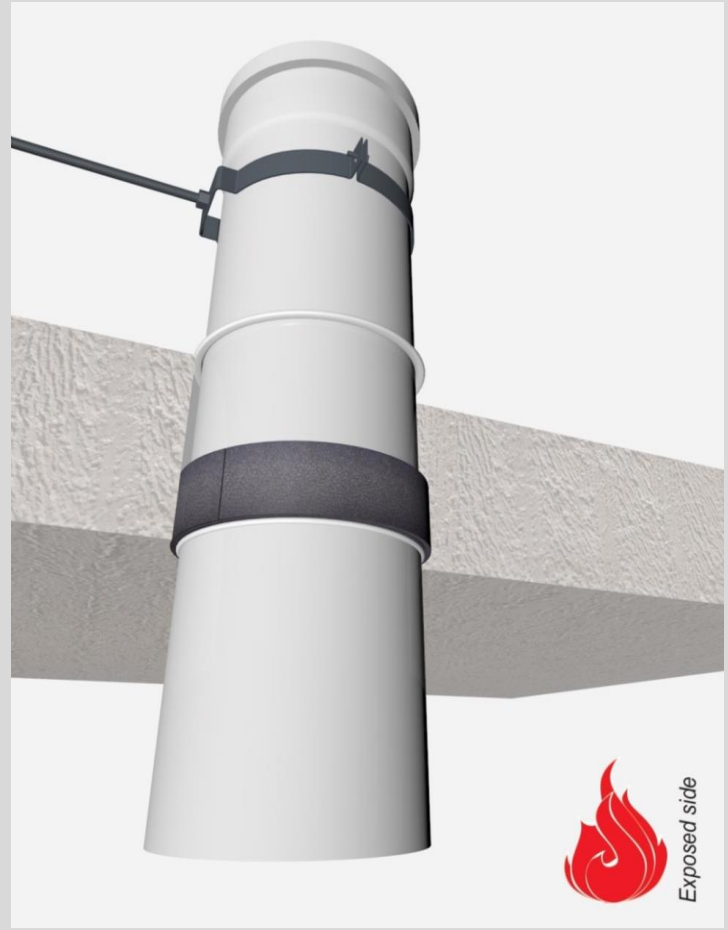
- installation instructions in [TDS](#)
- apply smoke seal Firetect Acrylic on 2 sides
- **other pipe dØ + s1** (thickness) are allowed within range and same pipe material
- angle: perpendicular + all angles between 90° and 45°

**principle detail**

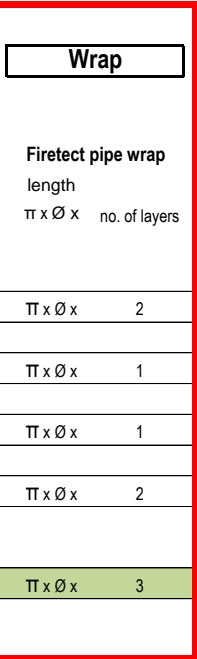


tested property  
test method  
service no.

fire resistance  
EN 1366-3  
**22-20**



**PP-MD pipes**



service type <sup>1)</sup> dØ (mm)    s1 (mm)	pipe socket	EI	constructive element <sup>2)</sup>	Wrap		application 1 or 2 sides	finish required	max. opening in construction	pipe end configuration	max. angle
				Firetect pipe wrap length π x Ø x	no. of layers					
Ø32    1,8	-	EI <b>180</b>	rigid floors ≥ 150 mm	π x Ø x	2	1 side	*	44 mm	U/C + C/C	perpendicular + all angles between 90° and 45°
Ø50    2,0	-	EI <b>240</b>	rigid floors ≥ 150 mm	π x Ø x	1	1 side	*	54 mm	U/C + C/C	
Ø75    2,6	-	EI <b>240</b>	rigid floors ≥ 150 mm	π x Ø x	1	1 side	*	79 mm	U/C + C/C	
Ø110    3,8	-	EI <b>240</b>	rigid floors ≥ 150 mm	π x Ø x	2	1 side	*	118 mm	U/C + C/C	
<b>max.</b> Ø160    5,4	-	EI <b>240</b>	rigid floors ≥ 150 mm	π x Ø x	3	1 side	*	180 mm	U/C + C/C	

\* smoke seal Acrylic on 2 sides

<sup>1)</sup> Penetration services must be supported; support distance ≤ 400mm.

<sup>2)</sup> Constructive element must be classified acc. EN 13501-2 for the required fire resistance period.