

Notes:

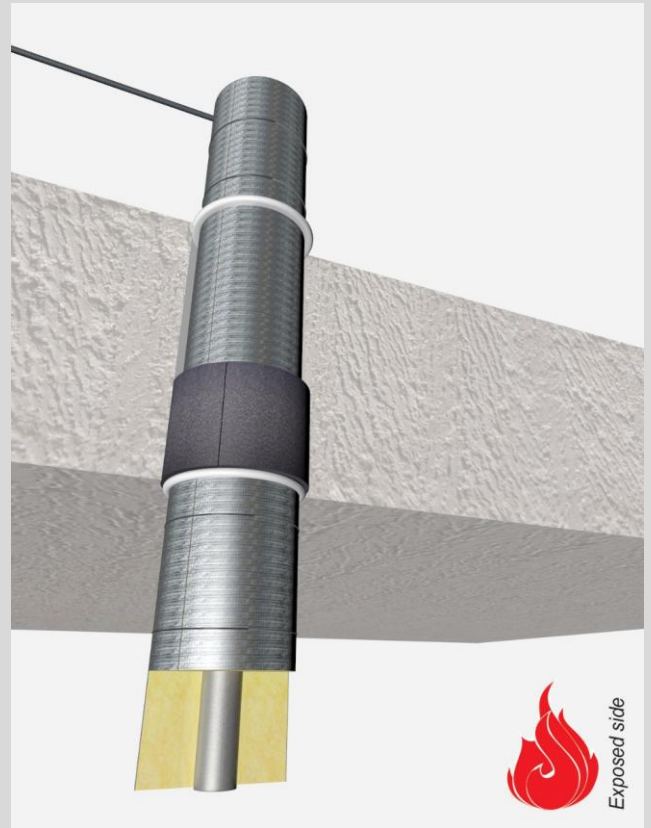
- installation instructions in [TDS](#)
- apply smoke seal Firetect Acrylic on 2 sides
- **other pipe dØ + s1** (thickness) are allowed within range and same pipe material
- angle: perpendicular + all angles between 90° and 45°

principle detail

Firetect®

tested property
test method
service no.

fire resistance
EN 1366-3
22-23



steel pipes

Wrap

service type ¹⁾ dØ (mm)	s1 (mm)	pipe insulation ²⁾ min. 75 kg/m ³ eg Climpipe, Rockwool or U Protect Pipe Section Alu2	EI	constructive element ³⁾	Firetect pipe wrap length π x Ø x no. of layers	application 1 or 2 sides	finish required	max. opening in construction	pipe end configuration	max. angle	
Ø15	1,0	glass / rock wool 20mm	1200 CS + CI	EI 240	rigid floors ≥ 150 mm	π x Ø x 2	1 side	*	63 mm	U/C + C/C	perpendicular + all angles between 90° and 45°
		22mm	1200 CS + CI	EI 180	rigid floors ≥ 150 mm	π x Ø x 1	1 side	*	63 mm	C/U + U/C + C/C	
		30mm	1200 CS + CI	EI 240	rigid floors ≥ 150 mm	π x Ø x 2	1 side	*	83 mm	U/C + C/C	
		30mm	1200 CS + CI	EI 180	rigid floors ≥ 150 mm	π x Ø x 1	1 side	*	63 mm	C/U + U/C + C/C	
		40mm	1200 CS + CI	EI 240	rigid floors ≥ 150 mm	π x Ø x 2	1 side	*	103 mm	U/C + C/C	
		50mm	1200 CS + CI	EI 240	rigid floors ≥ 150 mm	π x Ø x 2	1 side	*	123 mm	U/C + C/C	
		60mm	1200 CS + CI	EI 120	rigid floors ≥ 150 mm	π x Ø x 3	1 side	*	147 mm	U/C + C/C	
80mm	1200 CS + CI	EI 120	rigid floors ≥ 150 mm	π x Ø x 3	1 side	*	202 mm	U/C + C/C			
Ø22	1,1	glass / rock wool 22mm	1200 CS + CI	EI 180	rigid floors ≥ 150 mm	π x Ø x 1	1 side	*	86 mm	C/U + U/C + C/C	
		30mm	1200 CS + CI	EI 180	rigid floors ≥ 150 mm	π x Ø x 1	1 side	*	86 mm	C/U + U/C + C/C	
Ø35	1,5	glass / rock wool 22mm	1200 CS + CI	EI 180	rigid floors ≥ 150 mm	π x Ø x 1	1 side	*	99 mm	C/U + U/C + C/C	
		30mm	1200 CS + CI	EI 180	rigid floors ≥ 150 mm	π x Ø x 1	1 side	*	99 mm	C/U + U/C + C/C	
Ø42,2	3,25	glass / rock wool 20mm	1200 CS + CI	EI 240	rigid floors ≥ 150 mm	π x Ø x 2	1 side	*	102 mm	C/U + U/C + C/C	
		30mm	1200 CS + CI	EI 240	rigid floors ≥ 150 mm	π x Ø x 2	1 side	*	110 mm	C/U + U/C + C/C	
		40mm	1200 CS + CI	EI 240	rigid floors ≥ 150 mm	π x Ø x 2	1 side	*	130mm	C/U + U/C + C/C	
		50mm	1200 CS + CI	EI 240	rigid floors ≥ 150 mm	π x Ø x 2	1 side	*	150 mm	C/U + U/C + C/C	
		60mm	1200 CS + CI	EI 180	rigid floors ≥ 150 mm	π x Ø x 3	1 side	*	174 mm	C/U + U/C + C/C	
		80mm	1200 CS + CI	EI 180	rigid floors ≥ 150 mm	π x Ø x 3	1 side	*	220 mm	C/U + U/C + C/C	

>> continued on page 2

* smoke seal Acrylic on 2 sides

¹⁾ Penetration services must be supported; support distance ≤ 400mm.

²⁾ Pipe insulation must be fastened individually (not wrapped!) with steel wire; at max. 50mm + 300mm from constructive element.

³⁾ Constructive element must be classified acc. EN 13501-2 for the required fire resistance period.

Notes:

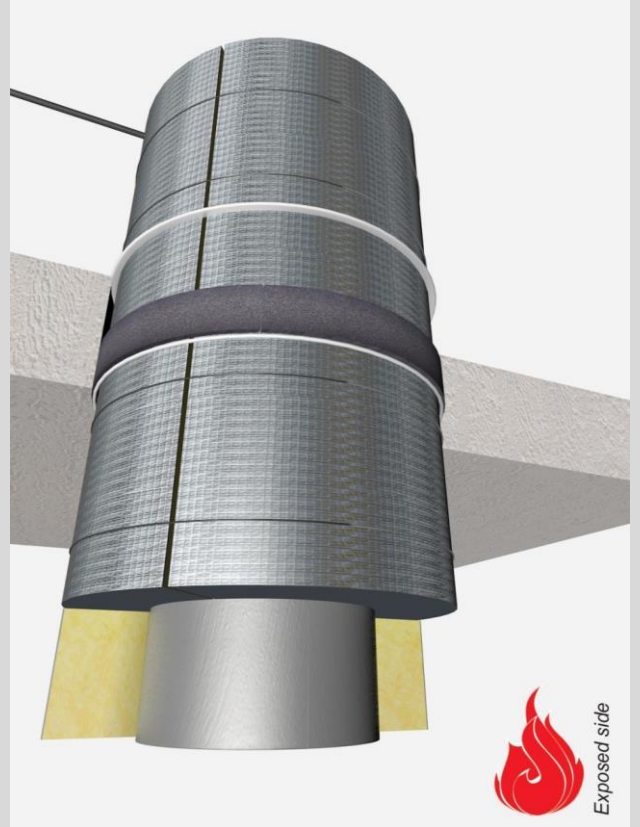
- installation instructions in [TDS](#)
- apply smoke seal Firetect Acrylic on 2 sides
- **other pipe dØ + s1** (thickness) are allowed within range and same pipe material
- angle: perpendicular + all angles between 90° and 45°

principle detail

Firetect®

tested property
test method
service no.

fire resistance
EN 1366-3
22-2



steel pipes

Wrap	
Firetect pipe wrap length π x Ø x	no. of layers

service type ¹⁾ dØ (mm)	s1 (mm)	pipe insulation ²⁾ min. 75 kg/m ³ eg Climpipe, Rockwool or U Protect Pipe Section Alu2	EI	constructive element ³⁾	Firetect pipe wrap length π x Ø x	no. of layers	application 1 or 2 sides	finish required	max. opening in construction	pipe end configuration	max. angle	
Ø76	2,1	glass / rock wool 20mm	1200 CS + CI	EI 240	rigid floors ≥ 150 mm	π x Ø x	2	1 side	*	132 mm	U/C + C/C	perpendicular + all angles between 90° and 45°
		30mm	1200 CS + CI	EI 120	rigid floors ≥ 150 mm	π x Ø x	2	1 side	*	144 mm	U/C + C/C	
		40mm	1200 CS + CI	EI 120	rigid floors ≥ 150 mm	π x Ø x	2	1 side	*	164 mm	U/C + C/C	
		50mm	1200 CS + CI	EI 120	rigid floors ≥ 150 mm	π x Ø x	2	1 side	*	202 mm	U/C + C/C	
		60mm	1200 CS + CI	EI 120	rigid floors ≥ 150 mm	π x Ø x	3	1 side	*	208 mm	U/C + C/C	
		80mm	1200 CS + CI	EI 120	rigid floors ≥ 150 mm	π x Ø x	3	1 side	*	248 mm	U/C + C/C	
max.												
Ø219,1	4,5	glass / rock wool 20mm	1200 CS + CI	EI 90	rigid floors ≥ 150 mm	π x Ø x	2	1 side	*	267 mm	C/U + U/C + C/C	perpendicular + all angles between 90° and 45°
		30mm	1200 CS + CI	EI 90	rigid floors ≥ 150 mm	π x Ø x	2	1 side	*	287 mm	C/U + U/C + C/C	
		40mm	1200 CS + CI	EI 90	rigid floors ≥ 150 mm	π x Ø x	2	1 side	*	307 mm	C/U + U/C + C/C	
		50mm	1200 CS + CI	EI 180	rigid floors ≥ 150 mm	π x Ø x	2	1 side	*	327 mm	C/U + U/C + C/C	
		60mm	1200 CS + CI	EI 180	rigid floors ≥ 150 mm	π x Ø x	3	1 side	*	351 mm	C/U + U/C + C/C	
		80mm	1200 CS + CI	EI 180	rigid floors ≥ 150 mm	π x Ø x	3	1 side	*	391 mm	C/U + U/C + C/C	

* smoke seal Acrylic on 2 sides

¹⁾ Penetration services must be supported; support distance ≤ 400mm.
²⁾ Pipe insulation must be fastened individually (not wrapped!) with steel wire; at max. 50mm + 300mm from constructive element.
³⁾ Constructive element must be classified acc. EN 13501-2 for the required fire resistance period.