

Notes:

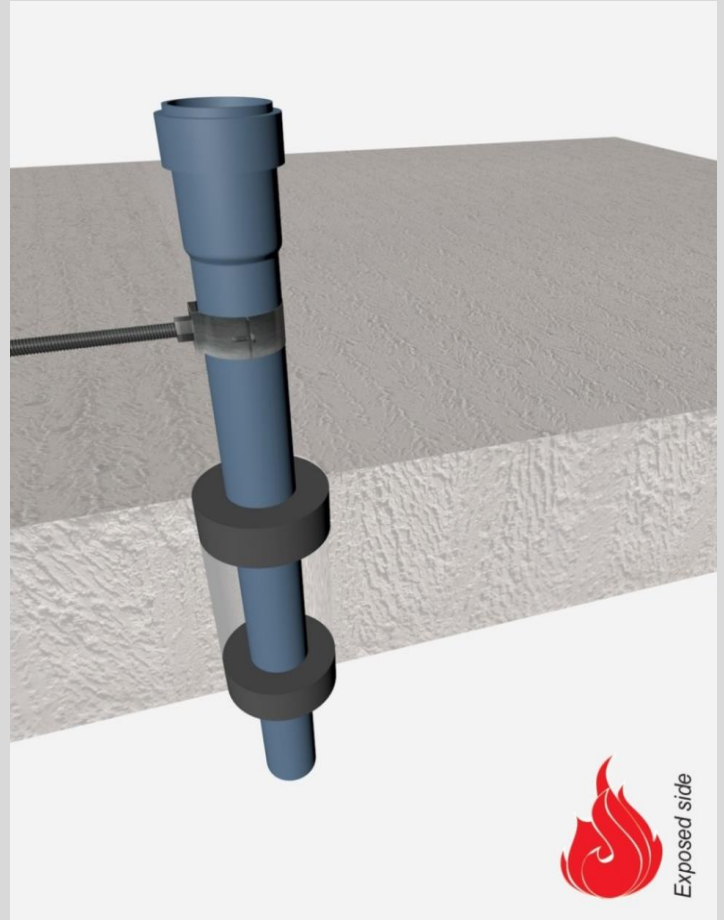
- installation instructions in [TDS](#)
- apply joint seal in opening, flush with floor on 2 sides
- **other pipe dØ + s1** (thickness) are allowed within range and same pipe material
- angle: perpendicular + all angles between 90° and 45°

principle detail

Firetect®

tested property
test method
service no.

fire resistance
EN 1366-3
22-17



PP-MD pipes

Graphite sealant

service type ¹⁾ dØ (mm)	pipe socket s1 (mm)	EI	constructive element ²⁾	Firetect joint seal		application 1 or 2 sides	backing required	max. opening in construction	pipe end configuration	max. angle	
				width	depth						
Ø32	1,8	-	EI 240	rigid floors ≥ 150 mm	15 mm	25 mm	2 sides	-	63 mm	U/C + C/C	perpendicular + all angles between 90° and 45°
Ø50	2,0	-	EI 180	rigid floors ≥ 150 mm	15 mm	25 mm	2 sides	-	80 mm	U/C + C/C	
Ø75	2,6	-	EI 240	rigid floors ≥ 150 mm	15 mm	25 mm	2 sides	-	105 mm	U/C + C/C	
max.											
Ø110	3,8	-	EI 60	rigid floors ≥ 150 mm	15 mm	25 mm	2 sides	-	140 mm	U/C + C/C	

¹⁾ Penetration services must be supported; support distance ≤ 400mm.

²⁾ Constructive element must be classified acc. EN 13501-2 for the required fire resistance period.