

Notes:

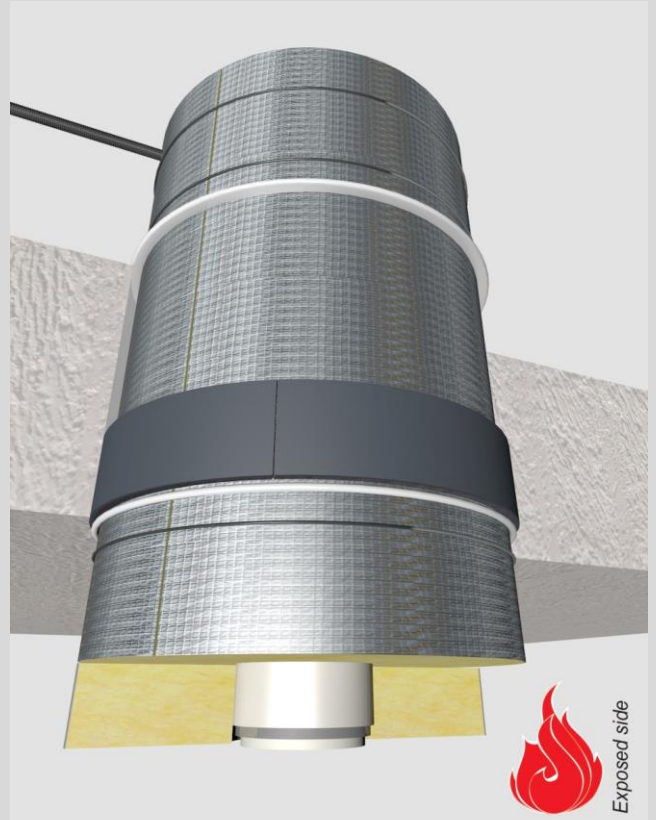
- installation instructions in [TDS](#)
- apply smoke seal Firetect Acrylic on 2 sides
- **other pipe dØ + s1** (thickness) are allowed within range and same pipe material
- angle: perpendicular + all angles between 90° and 45°

principle detail



tested property
test method
service no.

fire resistance
EN 1366-3
22-10



aluPE-X pipes

service type ¹⁾ dØ (mm)	pipe insulation ²⁾ s1 (mm)	pipe insulation ²⁾ min. 75 kg/m ³ eg Climpipe, Rockwool or U Protect Pipe Section Alu2	EI	constructive element ³⁾	Wrap		application	finish required	max. opening in construction	pipe end configuration	max. angle	
					Firetect pipe wrap length π x Ø x	no. of layers						
Ø16	2,0	glass / rock wool 20mm	1200 CS + Cl	EI 240	rigid floors ≥ 150 mm	π x Ø x	2	1 side	*	64 mm	U/C + C/C	perpendicular + all angles between 90° and 45°
		30mm	1200 CS + Cl	EI 240	rigid floors ≥ 150 mm	π x Ø x	2	1 side	*	84 mm	U/C + C/C	
		40mm	1200 CS + Cl	EI 240	rigid floors ≥ 150 mm	π x Ø x	2	1 side	*	104 mm	U/C + C/C	
		50mm	1200 CS + Cl	EI 240	rigid floors ≥ 150 mm	π x Ø x	2	1 side	*	124 mm	U/C + C/C	
		60mm	1200 CS + Cl	EI 120	rigid floors ≥ 150 mm	π x Ø x	3	1 side	*	148 mm	U/C + C/C	
80mm	1200 CS + Cl	EI 120	rigid floors ≥ 150 mm	π x Ø x	3	1 side	*	188 mm	U/C + C/C			
max.												
Ø75	7,5	glass / rock wool 20mm	1200 CS + Cl	EI 240	rigid floors ≥ 150 mm	π x Ø x	2	1 side	*	123 mm	U/C + C/C	
		30mm	1200 CS + Cl	EI 240	rigid floors ≥ 150 mm	π x Ø x	2	1 side	*	143 mm	U/C + C/C	
		40mm	1200 CS + Cl	EI 240	rigid floors ≥ 150 mm	π x Ø x	2	1 side	*	163 mm	U/C + C/C	
		50mm	1200 CS + Cl	EI 240	rigid floors ≥ 150 mm	π x Ø x	2	1 side	*	183 mm	U/C + C/C	
		60mm	1200 CS + Cl	EI 240	rigid floors ≥ 150 mm	π x Ø x	3	1 side	*	207 mm	U/C + C/C	
		80mm	1200 CS + Cl	EI 240	rigid floors ≥ 150 mm	π x Ø x	3	1 side	*	247 mm	U/C + C/C	

* smoke seal Acrylic on 2 sides

¹⁾ Penetration services must be supported; support distance ≤ 500mm.
²⁾ Pipe insulation must be fastened individually (not wrapped!) with steel wire: at max. 50mm + 300mm from constructive element.
³⁾ Constructive element must be classified acc. EN 13501-2 for the required fire resistance period.