

Notes:

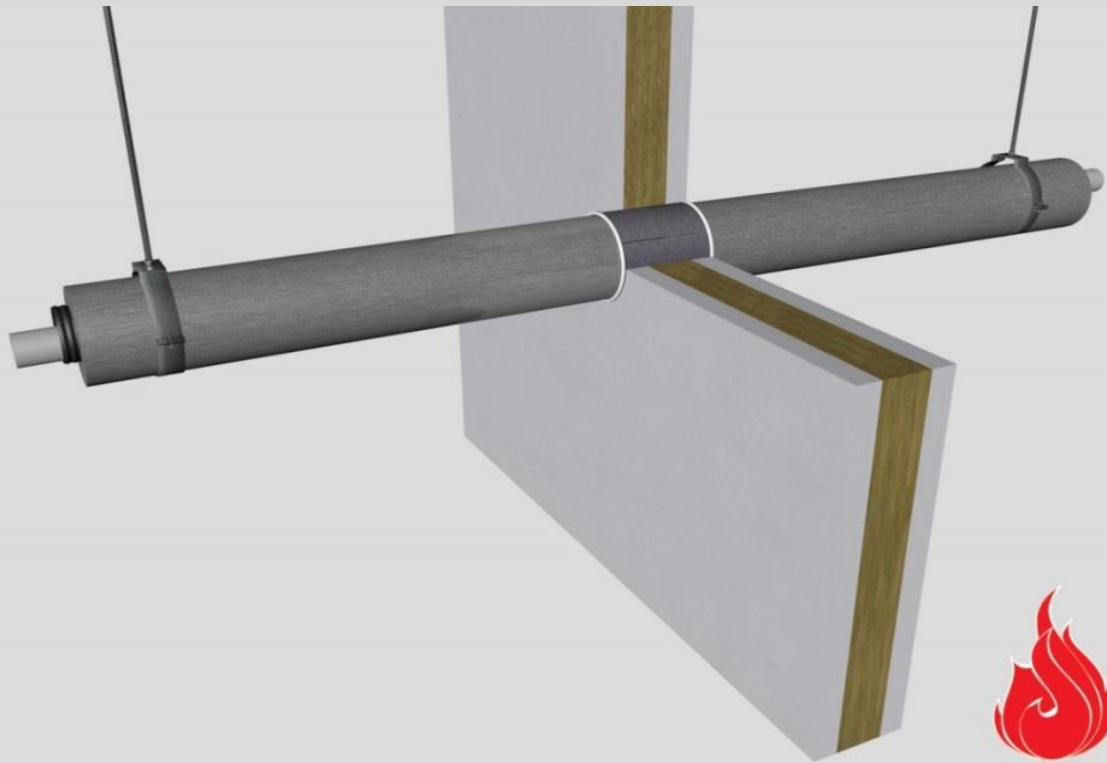
- installation instructions in [TDS](#)
- apply smoke seal Firetect Acrylic on 2 sides
- **other pipe dØ + s1** (thickness) are allowed within range and same pipe material
- EI for flexible walls ≥100mm is also applicable for **rigid walls** ≥100mm
- angle: perpendicular + all angles between 90° and 45°
- 'eccentric to zero' position in opening is allowed

principle detail

Firetect®

tested property
test method
service no.

fire resistance
EN 1366-3
21-9



PE-Xa pipes

service type ¹⁾		pipe insulation	EI	constructive element ²⁾	Firetect pipe wrap		application	finish	max. opening	pipe end	max. angle	
dØ (mm)	s1 (mm)	min. 28 kg/m ³ eg Uponor			length	no. of layers	1 or 2 sides	required	in construction	configuration		
up to					π x Ø x							
Ø15/28	2,5	-	EI 120	flexible walls ≥ 100 mm	π x Ø x	1	2 sides	*	32 mm	U/C + C/C	perpendicular + all angles between 90° and 45°	
		-	EI 240	rigid walls ≥ 150 mm	π x Ø x	1	2 sides	*	32 mm	U/C + C/C		
		polyolefin 10mm	1200 CS + Cl	EI 120	flexible walls ≥ 100 mm	π x Ø x	2	2 sides	*	56 mm		U/C + C/C
		polyolefin 10mm	1200 CS + Cl	EI 240	rigid walls ≥ 150 mm	π x Ø x	2	2 sides	*	63 mm		U/C + C/C
Ø16/25	2,2	-	EI 120	flexible walls ≥ 100 mm	π x Ø x	1	2 sides	*	29 mm	U/C + C/C		
		-	EI 240	rigid walls ≥ 150 mm	π x Ø x	1	2 sides	*	32 mm	U/C + C/C		
		polyolefin 10mm	1200 CS + Cl	EI 120	flexible walls ≥ 100 mm	π x Ø x	1	2 sides	*	49 mm		U/C + C/C
		polyolefin 10mm	1200 CS + Cl	EI 240	rigid walls ≥ 150 mm	π x Ø x	2	2 sides	*	63 mm		U/C + C/C
max.	4,4	-	EI 120	flexible walls ≥ 100 mm	π x Ø x	1	2 sides	*	58 mm	U/C + C/C		
		-	EI 240	rigid walls ≥ 150 mm	π x Ø x	1	2 sides	*	63 mm	U/C + C/C		
		polyolefin 20mm	1200 CS + Cl	EI 90	flexible walls ≥ 100 mm	π x Ø x	2	2 sides	*	102 mm		U/C + C/C
		polyolefin 10mm	1200 CS + Cl	EI 240	rigid walls ≥ 150 mm	π x Ø x	2	2 sides	*	102 mm		U/C + C/C

* smoke seal Acrylic on 2 sides

¹⁾ Penetration services must be supported; support distance ≤ 500mm.

²⁾ Constructive element must be classified acc. EN 13501-2 for the required fire resistance period. EI for flexible walls ≥100mm is also applicable for rigid walls ≥100mm!