

Notes:

- installation instructions in [TDS](#)
- apply joint seal in opening, flush with wall on 2 sides
- **other pipe dØ + s1** (thickness) are allowed within range and same pipe material
- EI for flexible walls ≥100mm is also applicable for **rigid walls** ≥100mm
- angle: perpendicular + all angles between 90° and 45°

principle detail

Firetect®

tested property

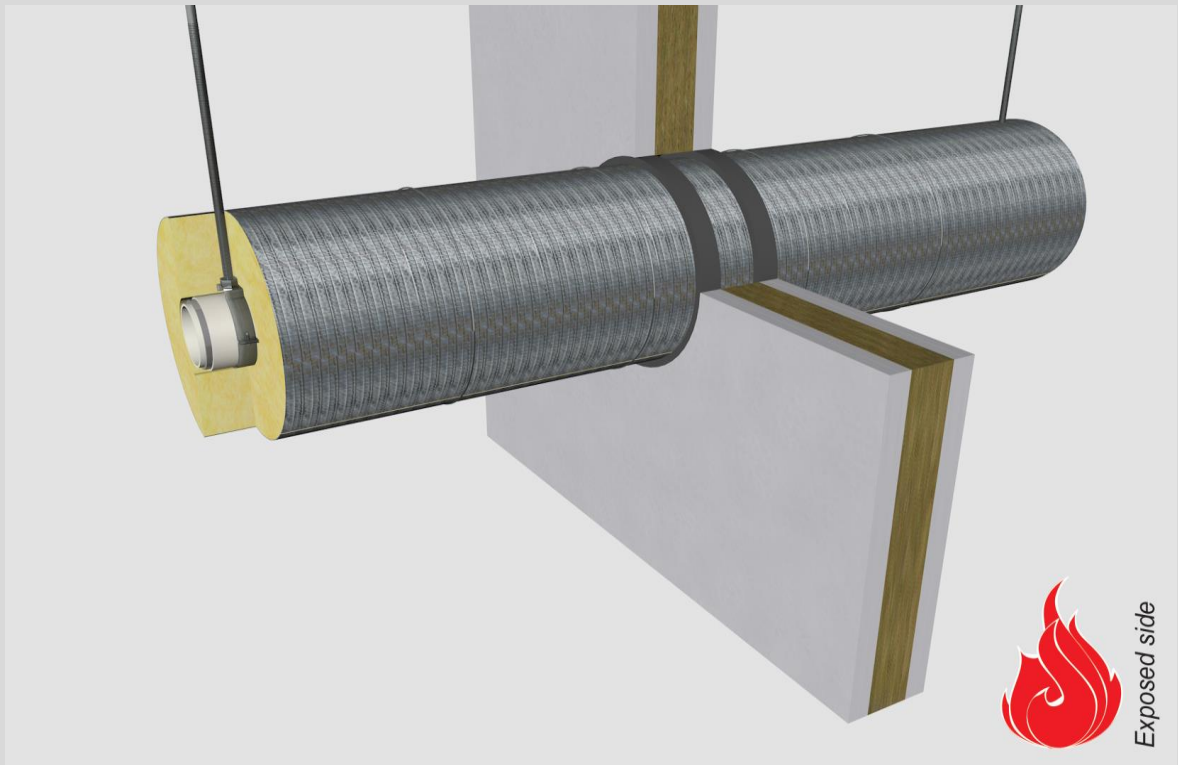
fire resistance

test method

EN 1366-3

service no.

21-5



aluPE-X pipes

Graphite sealant

service type ¹⁾		pipe insulation ²⁾		EI	constructive element ³⁾	Firetect joint seal		application	backing required	max. opening in construction	pipe end configuration	max. angle		
dØ (mm)	s1 (mm)	min. 75 kg/m ³ eg Climpipe, Rockwool	or U Protect Pipe Section Alu2			width	depth							
Ø16	2,0	glass / rock wool	20mm	1200 CS + CI	EI 120	flexible walls ≥ 100 mm	10 mm	25 mm	2 sides	-	76 mm	U/C + C/C	perpendicular + all angles between 90° and 45°	
			20mm	1200 CS + CI	EI 240	rigid walls ≥ 150 mm	15 mm	25 mm	2 sides	-	86 mm	U/C + C/C		
	30mm	1200 CS + CI	30mm	1200 CS + CI	EI 120	flexible walls ≥ 100 mm	10 mm	25 mm	2 sides	-	96 mm	U/C + C/C		
			30mm	1200 CS + CI	EI 240	rigid walls ≥ 150 mm	15 mm	25 mm	2 sides	-	106 mm	U/C + C/C		
	40mm	1200 CS + CI	40mm	1200 CS + CI	EI 120	flexible walls ≥ 100 mm	10 mm	25 mm	2 sides	-	116 mm	U/C + C/C		
			40mm	1200 CS + CI	EI 240	rigid walls ≥ 150 mm	15 mm	25 mm	2 sides	-	126 mm	U/C + C/C		
	50mm	1200 CS + CI	50mm	1200 CS + CI	EI 120	flexible walls ≥ 100 mm	10 mm	25 mm	2 sides	-	136 mm	U/C + C/C		
			50mm	1200 CS + CI	EI 240	rigid walls ≥ 150 mm	15 mm	25 mm	2 sides	-	146 mm	U/C + C/C		
	60mm	1200 CS + CI	60mm	1200 CS + CI	EI 120	flexible walls ≥ 100 mm	10 mm	25 mm	2 sides	-	156 mm	U/C + C/C		
			60mm	1200 CS + CI	EI 240	rigid walls ≥ 150 mm	15 mm	25 mm	2 sides	-	166 mm	U/C + C/C		
	80mm	1200 CS + CI	80mm	1200 CS + CI	EI 120	flexible walls ≥ 100 mm	10 mm	25 mm	2 sides	-	196 mm	U/C + C/C		
			80mm	1200 CS + CI	EI 240	rigid walls ≥ 150 mm	15 mm	25 mm	2 sides	-	206 mm	U/C + C/C		
	max.													
	Ø75	7,5	glass / rock wool	20mm	1200 CS + CI	EI 120	flexible walls ≥ 100 mm	10 mm	25 mm	2 sides	-	135 mm		U/C + C/C
				20 mm	1200 CS + CI	EI 240	rigid walls ≥ 150 mm	15 mm	25 mm	2 sides	-	145 mm		U/C + C/C
		30mm	1200 CS + CI	30mm	1200 CS + CI	EI 120	flexible walls ≥ 100 mm	10 mm	25 mm	2 sides	-	155 mm		U/C + C/C
30mm				1200 CS + CI	EI 240	rigid walls ≥ 150 mm	15 mm	25 mm	2 sides	-	165 mm	U/C + C/C		
40mm		1200 CS + CI	40mm	1200 CS + CI	EI 120	flexible walls ≥ 100 mm	10 mm	25 mm	2 sides	-	175 mm	U/C + C/C		
			40mm	1200 CS + CI	EI 240	rigid walls ≥ 150 mm	15 mm	25 mm	2 sides	-	185 mm	U/C + C/C		
50mm		1200 CS + CI	50mm	1200 CS + CI	EI 120	flexible walls ≥ 100 mm	10 mm	25 mm	2 sides	-	195 mm	U/C + C/C		
			50mm	1200 CS + CI	EI 240	rigid walls ≥ 150 mm	15 mm	25 mm	2 sides	-	205 mm	U/C + C/C		
60mm		1200 CS + CI	60mm	1200 CS + CI	EI 120	flexible walls ≥ 100 mm	10 mm	25 mm	2 sides	-	215 mm	U/C + C/C		
			60mm	1200 CS + CI	EI 240	rigid walls ≥ 150 mm	15 mm	25 mm	2 sides	-	225 mm	U/C + C/C		
80mm		1200 CS + CI	80mm	1200 CS + CI	EI 120	flexible walls ≥ 100 mm	10 mm	25 mm	2 sides	-	255 mm	U/C + C/C		
			80mm	1200 CS + CI	EI 240	rigid walls ≥ 150 mm	15 mm	25 mm	2 sides	-	265 mm	U/C + C/C		

¹⁾ Penetration services must be supported; support distance ≤ 500mm.

²⁾ Pipe insulation must be fastened individually (not wrapped!) with steel wire: at max. 50mm + 300mm from constructive element.

³⁾ Constructive element must be classified acc. EN 13501-2 for the required fire resistance period. **EI for flexible walls ≥100mm is also applicable for rigid walls ≥100mm!**