

Notes:

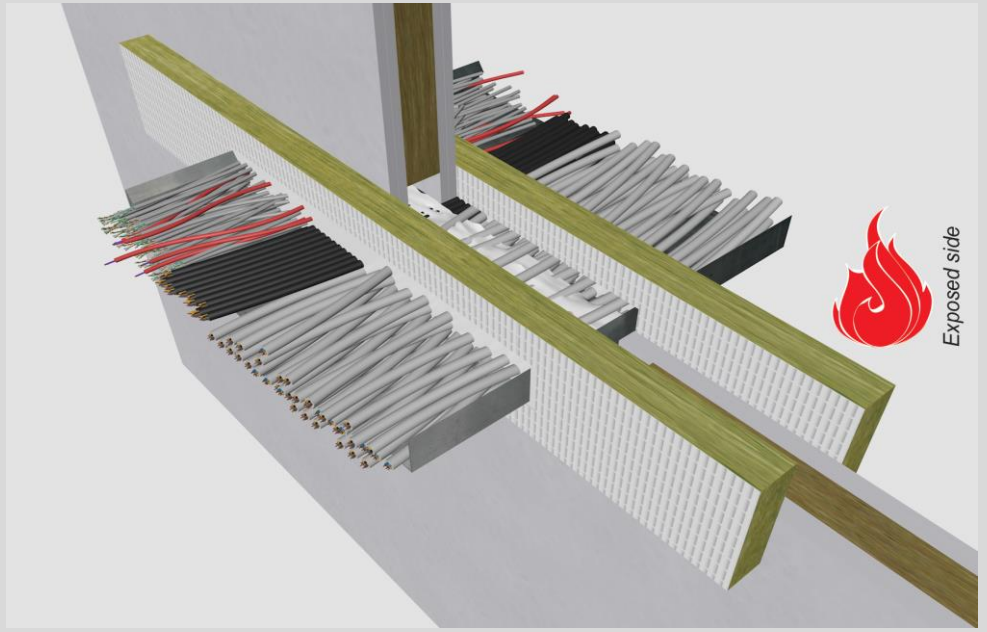
- installation instructions in [TDS](#)
- **all cable dØ** are allowed within group type and max. Cu mm²
- EI for flexible walls ≥100mm is also applicable for **rigid walls** ≥100mm
- default: coating on cables and/or trays is **NOT** required!

principle detail

Firetect®

tested property
test method
service no.
tested property
test method

fire resistance
EN 1366-3
21-15
smoke resistance
EN 1634-3
NEN 6075



cables in trays + ladders + wire mesh

cable specs	group	assembly (steel) Cu (mm ²) max.	service specs (steel)	EI	constructive element ¹⁾	Acrylic sealant	application	max. opening in construction	PA board	finish required	support distance ²⁾ service
						Firetect joint seal width (mm)			Firetect fire board type 2S 50 mm 1 or 2 sides		
trays, perforated + non-perforated											
cables only											
group 1 - small sheathed ≤ Ø 21mm group 2 - medium sheathed ≤ Ø 50mm group 3 - large sheathed ≤ Ø 80mm group 4 - data + fibre optic ≤ Ø 100mm group 5 - non-sheathed ≤ Ø 23mm plastic or steel conduits ≤ Ø 16mm	29647	≤ 500 x 60 mm	EI 60 EI 30 EI 30 EI 60	flexible walls ≥ 100 mm flexible walls ≥ 100 mm rigid walls ≥ 100 mm rigid floors ≥ 150 mm	5 mm 5 mm 5 mm 5 mm	2 sides 2 sides 2 sides 2 sides	600 x 1200 mm 600 x 1200 mm 600 x 1200 mm 600 x 5000 mm	2 sides 2 sides 1 side 2 sides	- - - -	250 + 500 mm 500 mm 500 mm 250 + 400 mm	
group 1 - small sheathed ≤ Ø 21mm group 4 - data + fibre optic	12619	≤ 600 x 50 mm	EI 60 EI 120	flexible walls ≥ 100 mm flexible walls ≥ 100 mm	10 mm 10 mm	2 sides 2 sides	620 x 70 mm 620 x 70 mm	- 1 side	- -	500 mm 500 mm	
group 1 - small sheathed ≤ Ø 21mm group 4 - data + fibre optic	1806	≤ 350 x 60 mm	EI 90	rigid walls ≥ 150 mm	-	-	450 x 200 mm	1 side	200 LI * unexp. side	500 mm	
cables + pipes (mixed configuration)											
group 1 - small sheathed ≤ Ø 21mm group 2 - medium sheathed ≤ Ø 50mm group 3 - large sheathed ≤ Ø 80mm group 4 - data + fibre optic ≤ Ø 100mm group 5 - non-sheathed ≤ Ø 23mm plastic or steel conduits ≤ Ø 16mm	15707	≤ 500 x 60 mm	EI 60 EI 60	flexible walls ≥ 100 mm rigid floors ≥ 150 mm	5 mm 5 mm	2 sides 2 sides	600 x 1200 mm + 25% 600 x 5000 mm	2 sides 2 sides	- -	500 mm 250 + 400 mm	
cable ladders											
cables only											
group 1 - small sheathed ≤ Ø 21mm group 2 - medium sheathed ≤ Ø 50mm group 3 - large sheathed ≤ Ø 80mm group 4 - data + fibre optic ≤ Ø 100mm group 5 - non-sheathed ≤ Ø 23mm plastic or steel conduits ≤ Ø 16mm	29647	≤ 300 x 60 mm	EI 60 EI 30 EI 30 EI 60	flexible walls ≥ 100 mm flexible walls ≥ 100 mm rigid walls ≥ 100 mm rigid floors ≥ 150 mm	5 mm 5 mm 5 mm 5 mm	2 sides 2 sides 2 sides 2 sides	600 x 1200 mm 600 x 1200 mm 600 x 1200 mm 600 x 5000 mm	2 sides 2 sides 1 side 2 sides	- - - -	250 + 500 mm 500 mm 500 mm 250 + 400 mm	
group 4 - data + fibre optic	2781	≤ 350 x 60 mm	EI 120	rigid walls ≥ 150 mm	-	-	450 x 200 mm	1 side	200 LI * 2 sides	500 mm	
group 1 - small sheathed ≤ Ø 21mm group 2 - medium sheathed ≤ Ø 50mm	780	≤ 300 x 60 mm	EI 180	rigid floors ≥ 150 mm	-	-	400 x 200 mm	2 sides	-	400 mm	

>> contined on page 2

in PA board 2S 50 mm

* PA coating, DFT 0,8mm

¹⁾ Constructive element must be classified acc. EN 13501-2 for the required fire resistance period. EI for flexible walls ≥100mm is also applicable for rigid walls ≥100mm!

²⁾ Penetration services (cable trays etc.) must be supported.

Notes:

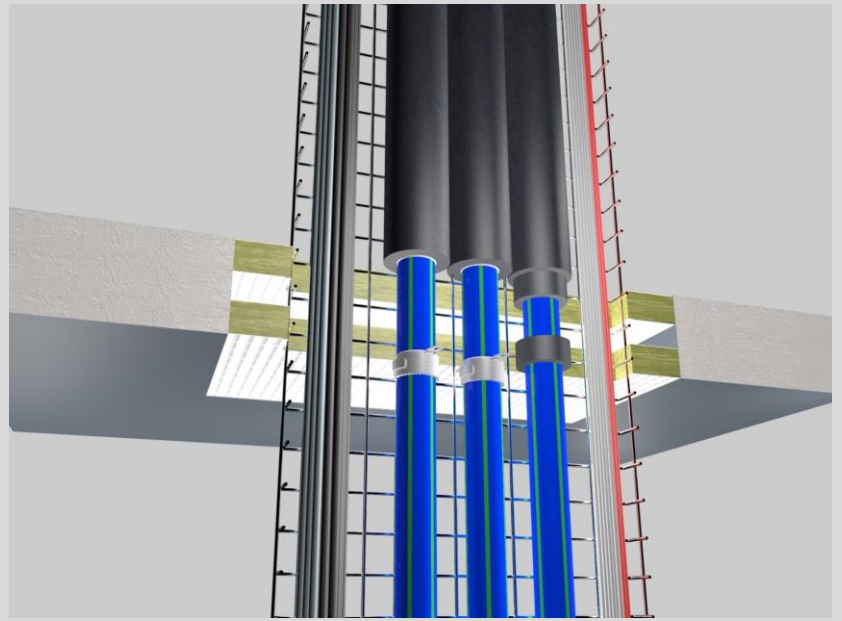
- installation instructions in [TDS](#)
- **all cable dØ** are allowed within group type and max. Cu mm²
- EI for flexible walls ≥100mm is also applicable for **rigid walls** ≥100mm
- default: coating on cables and/or trays is **NOT** required!

principle detail

Firetect®

tested property
test method
service no.
tested property
test method

fire resistance
EN 1366-3
17-6-6
smoke resistance
EN 1634-3
NEN 6075



cables in trays + ladders + wire mesh

cable specs	group	assembly Cu (mm ²) max.	service specs (steel)	EI	constructive element ¹⁾	Acrylic sealant	application	max. opening in construction	PA board	finish required	support distance ²⁾ service
						Firetect joint seal width (mm)			Firetect fire board type 2S 50 mm 1 or 2 sides		
cable ladders											
cables + pipes (mixed configuration)											
group 1 - small sheathed ≤ Ø 21mm group 2 - medium sheathed ≤ Ø 50mm group 3 - large sheathed ≤ Ø 80mm group 4 - data + fibre optic ≤ Ø 100mm group 5 - non-sheathed ≤ Ø 23mm plastic or steel conduits ≤ Ø 16mm		15707	≤ 300 x 60 mm	EI 60 EI 60	flexible walls ≥ 100 mm rigid floors ≥ 150 mm	5 mm 5 mm	2 sides 2 sides	600 x 1200 mm + 25% 600 x 5000 mm	2 sides 2 sides	- -	500 mm 250 + 400 mm
trays, wire mesh											
cables only											
group 4 - data + fibre optic		6401	≤ 600 x 55 mm	EI 90	flexible walls ≥ 100 mm no trimming, no wall insulation for 100mm perimeter	5 mm	2 sides	660 x 120 mm	2 sides	-	250 + 500 mm
cables + pipes (mixed configuration)											
group 1 - small sheathed ≤ Ø 21mm group 2 - medium sheathed ≤ Ø 50mm group 4 - data + fibre optic		6093	≤ 600 x 105 mm	EI 60	flexible walls ≥ 100 mm no trimming, no wall insulation for 100mm perimeter	5 mm	2 sides	730 x 230 mm	2 sides	-	250 + 500 mm
group 1 - small sheathed ≤ Ø 21mm group 4 - data + fibre optic		6374	≤ 600 x 60 mm	EI 60	rigid floors ≥ 150 mm	5 mm	2 sides	600 x 800 mm	2 sides	-	400 mm

in PA board 2S 50 mm

¹⁾ Constructive element must be classified acc. EN 13501-2 for the required fire resistance period. EI for flexible walls ≥100mm is also applicable for rigid walls ≥100mm!
²⁾ Penetration services (cable trays etc.) must be supported.