

**Notes:**

- installation instructions in [TDS](#)
- mount with Firetect Acrylic on 2 sides and close transit with loose RW
- **other cable dØ** are allowed within group type
- EI for flexible walls ≥100mm is also applicable for **rigid walls** ≥100mm

**principle detail**

**Firetect®**

**tested property**

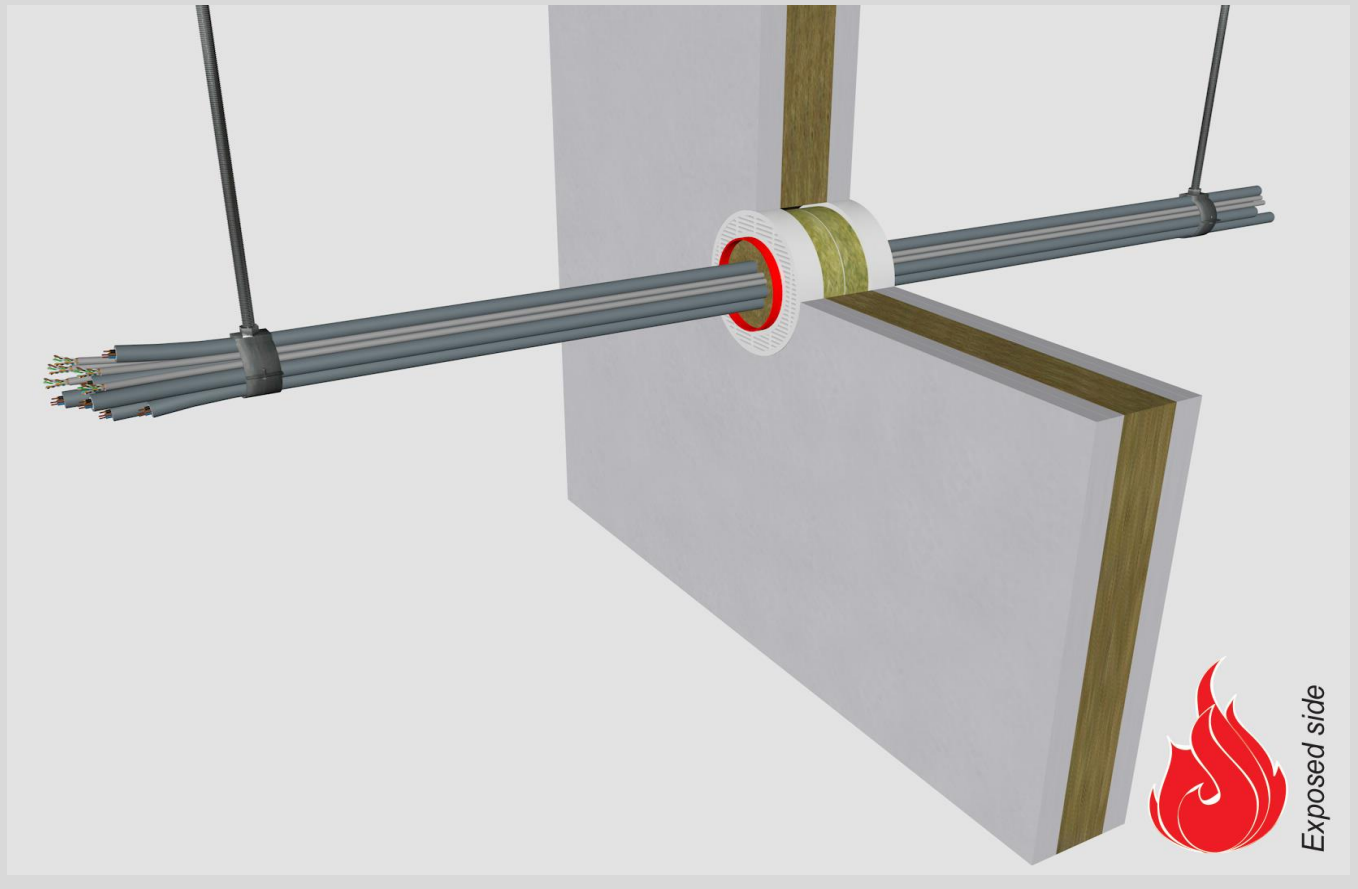
fire resistance

**test method**

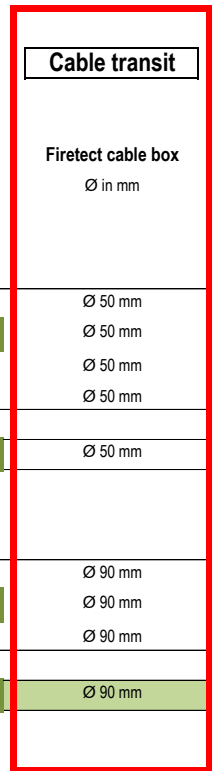
EN 1366-3

**service no.**

21-14



**cables**



bundle dØ (mm)	cable specs <sup>1)</sup> group	conduit	assembly Cu (mm <sup>2</sup> )	EI	constructive element <sup>2)</sup>	Firetect cable box Ø in mm	application 1 or 2 sides	finish required	max. opening in construction
			<b>up to</b>						
Ø50	group 1 - small sheathed ≤ Ø 21mm	-	1124	EI 60	flexible walls ≥ 100 mm	Ø 50 mm	centrally	*	Ø76
			817	EI 120	flexible walls ≥ 100 mm	Ø 50 mm	centrally	*	Ø90
			1124	EI 120	rigid walls ≥ 150 mm	Ø 50 mm	centrally	*	Ø71
			1124	EI 120	rigid floors ≥ 150 mm	Ø 50 mm	centrally	*	Ø71
Ø50	group 4 - data + fibre optic	-	61	EI 120	flexible walls ≥ 100 mm	Ø 50 mm	centrally	*	Ø90
			<b>max.</b>						
Ø90	group 1 - small sheathed ≤ Ø 21mm	-	2729	EI 60	flexible walls ≥ 100 mm	Ø 90 mm	centrally	*	Ø110
			1855	EI 90	flexible walls ≥ 100 mm	Ø 90 mm	centrally	*	Ø140
			2248	EI 120	rigid floors ≥ 150 mm	Ø 90 mm	centrally	*	Ø110
Ø90	group 4 - data + fibre optic	-	365	EI 90	flexible walls ≥ 100 mm	Ø 90 mm	centrally	*	Ø140

in PA board 2S 50 mm

\* mount transit with Acrylic sealant  
+ put loose rock wool ≥ 100kg/m<sup>3</sup> in transit on 2 sides

<sup>1)</sup> Penetration services must be supported; support distance ≤ 500mm (wall) or ≤ 400mm (floor).

<sup>2)</sup> Constructive element must be classified acc. EN 13501-2 for the required fire resistance period. EI for flexible walls ≥100mm is also applicable for rigid walls ≥100mm!