

Notes:

- installation instructions in [TDS](#)
- apply smoke seal Firetect Acrylic on 2 sides
- **other cable dØ** are allowed within group type and same conduit material
- EI for flexible walls ≥100mm is also applicable for **rigid walls** ≥100mm

principle detail

Firetect®

tested property

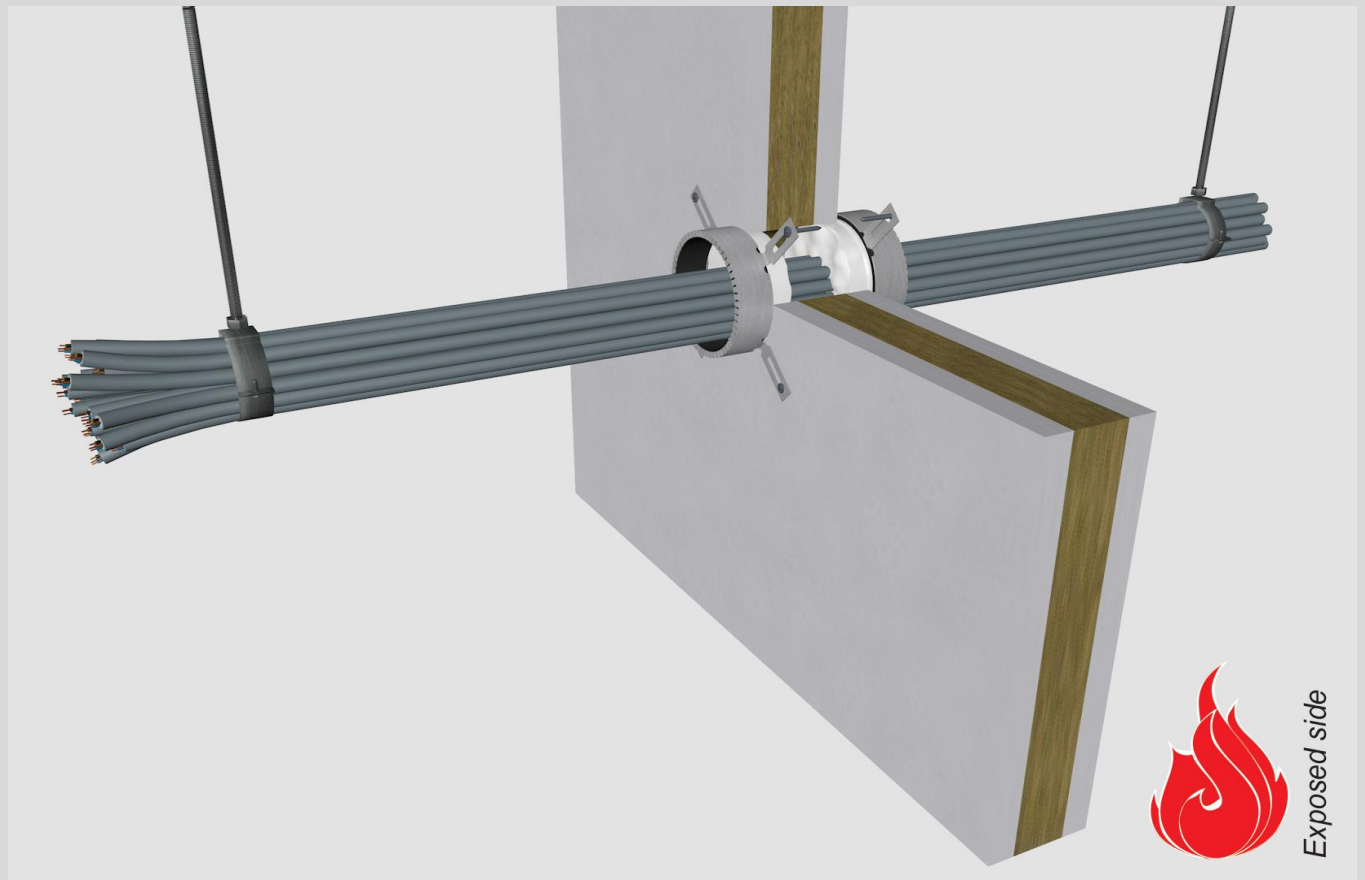
fire resistance

test method

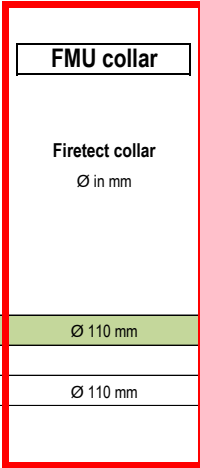
EN 1366-3

service no.

21-10



cables



bundle dØ (mm)	cable specs ¹⁾		assembly Cu (mm ²)	EI	constructive element ²⁾	Firetect collar Ø in mm	application 1 or 2 sides	finish required	max. opening in construction
	group	conduit							
max. Ø110	group 1 - small sheathed ≤ Ø 21mm	-	max. 4052	EI 120	flexible walls ≥ 100 mm	Ø 110 mm	2 sides	*	Ø110
Ø110	group 1 - small sheathed ≤ Ø 21mm	-	11494	EI 240	rigid floors ≥ 150 mm	Ø 110 mm	1 side	*	Ø110

* smoke seal Acrylic on 2 sides

¹⁾ Penetration services must be supported; support distance ≤ 500mm (wall) or ≤ 400mm (floor).

²⁾ Constructive element must be classified acc. EN 13501-2 for the required fire resistance period. EI for flexible walls ≥100mm is also applicable for rigid walls ≥100mm!