

Notes:

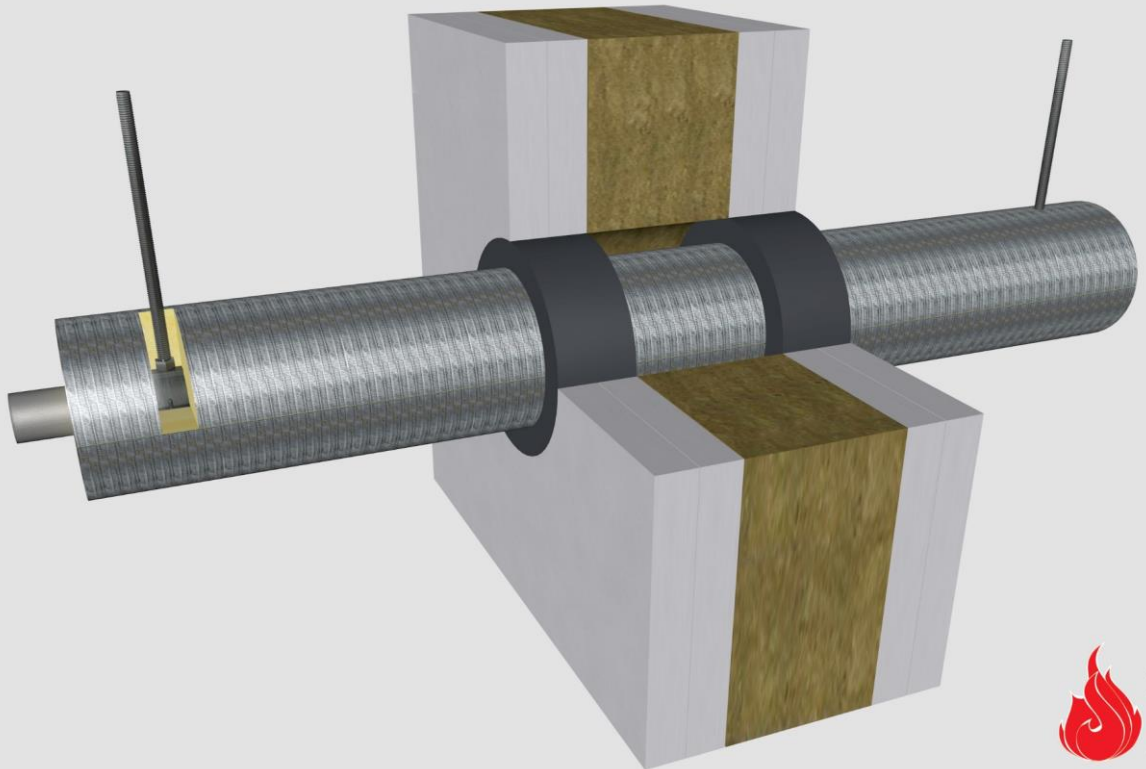
- installation instructions in [TDS](#)
- apply joint seal in opening, flush with wall on 2 sides
- **other pipe dØ + s1** (thickness) are allowed within range and same pipe material
- EI for flexible walls ≥100mm is also applicable for **rigid walls** ≥100mm
- angle: perpendicular + all angles between 90° and 45°

principle detail

Firetect®

tested property
test method
service no.

fire resistance
EN 1366-3
19-51



steel pipes

Graphite sealant

service type ¹⁾ dØ (mm)	pipe insulation ²⁾ s1 (mm)	pipe insulation min. 75 kg/m ³ eg Climpipe, Rockwool or U Protect Pipe Section Alu2	EI	constructive element ³⁾	Firetect joint seal		application	backing required	max. opening in construction	pipe end configuration	max. angle	
					width	depth						
Ø15	1,0	glass / rock wool 20mm	1200 CS + CI	EI 120	flexible walls ≥ 100 mm	10 mm	25 mm	2 sides	-	75 mm	C/U + U/C + C/C	perpendicular + all angles between 90° and 45°
						15 mm	25 mm	2 sides	-	85 mm	U/C + C/C	
	30mm	1200 CS + CI	EI 120	flexible walls ≥ 100 mm	10 mm	25 mm	2 sides	-	95 mm	C/U + U/C + C/C		
					15 mm	25 mm	2 sides	-	105 mm	U/C + C/C		
	40mm	1200 CS + CI	EI 120	flexible walls ≥ 100 mm	10 mm	25 mm	2 sides	-	115 mm	C/U + U/C + C/C		
					15 mm	25 mm	2 sides	-	125 mm	U/C + C/C		
	50mm	1200 CS + CI	EI 120	flexible walls ≥ 100 mm	10 mm	25 mm	2 sides	-	135 mm	C/U + U/C + C/C		
					15 mm	25 mm	2 sides	-	145 mm	U/C + C/C		
60mm	1200 CS + CI	EI 240	rigid walls ≥ 150 mm	15 mm	25 mm	2 sides	-	165 mm	U/C + C/C			
				15 mm	25 mm	2 sides	-	205 mm	U/C + C/C			
Ø42,2	3,25	20mm glass / rock wool	1200 CS + CI	EI 120	flexible walls ≥ 100 mm	10 mm	25 mm	2 sides	-	102 mm	C/U + U/C + C/C	
						15 mm	25 mm	2 sides	-	112 mm	C/U + U/C + C/C	
	30mm	1200 CS + CI	EI 120	flexible walls ≥ 100 mm	10 mm	25 mm	2 sides	-	122 mm	C/U + U/C + C/C		
					15 mm	25 mm	2 sides	-	132 mm	C/U + U/C + C/C		
	40mm	1200 CS + CI	EI 120	flexible walls ≥ 100 mm	10 mm	25 mm	2 sides	-	142 mm	C/U + U/C + C/C		
					15 mm	25 mm	2 sides	-	152 mm	C/U + U/C + C/C		
	50mm	1200 CS + CI	EI 120	flexible walls ≥ 100 mm	10 mm	25 mm	2 sides	-	162 mm	C/U + U/C + C/C		
					15 mm	25 mm	2 sides	-	172 mm	C/U + U/C + C/C		
	60mm	1200 CS + CI	EI 90	rigid walls ≥ 150 mm	10 mm	25 mm	2 sides	-	182 mm	C/U + U/C + C/C		
					15 mm	25 mm	2 sides	-	192 mm	C/U + U/C + C/C		
	80mm	1200 CS + CI	EI 90	flexible walls ≥ 100 mm	10 mm	25 mm	2 sides	-	222 mm	C/U + U/C + C/C		
					15 mm	25 mm	2 sides	-	244 mm	C/U + U/C + C/C		

>> contined on page 2

¹⁾ Penetration services must be supported; support distance ≤ 500mm.

²⁾ Pipe insulation must be fastened individually (not wrapped!) with steel wire: at max. 50mm + 300mm from constructive element.

³⁾ Constructive element must be classified acc. EN 13501-2 for the required fire resistance period. EI for flexible walls ≥100mm is also applicable for rigid walls ≥100mm!

Notes:

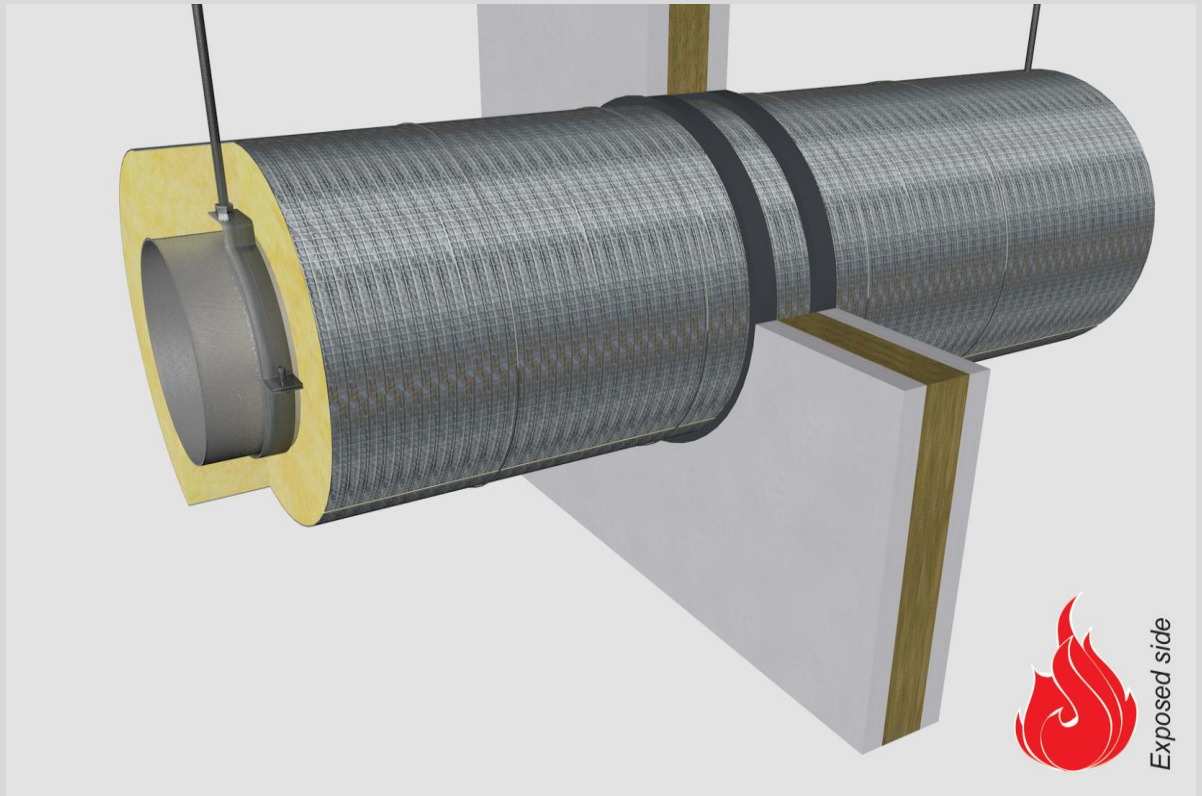
- installation instructions in [TDS](#)
- apply joint seal in opening, flush with wall on 2 sides
- **other pipe dØ + s1** (thickness) are allowed within range and same pipe material
- EI for flexible walls ≥100mm is also applicable for **rigid walls** ≥100mm
- angle: perpendicular + all angles between 90° and 45°

principle detail

Firetect®

tested property
test method
service no.

fire resistance
EN 1366-3
21-1



steel pipes

Graphite sealant

service type ¹⁾ dØ (mm)	pipe insulation ²⁾ s1 (mm)	min. 75 kg/m ³ eg Climpipe, Rockwool or U Protect Pipe Section Alu2	EI	constructive element ³⁾	Firetect joint seal		application 1 or 2 sides	backing required	max. opening in construction	pipe end configuration	max. angle	
					width	depth						
Ø76	2,1	glass / rock wool 20mm	1200 CS + CI	EI 90	flexible walls ≥ 100 mm	10 mm	25 mm	2 sides	-	136 mm	C/U + U/C + C/C	perpendicular + all angles between 90° and 45°
						15 mm	25 mm	2 sides	-	150 mm	U/C + C/C	
	30mm	1200 CS + CI	EI 90	flexible walls ≥ 100 mm	10 mm	25 mm	2 sides	-	156 mm	C/U + U/C + C/C		
					15 mm	25 mm	2 sides	-	166 mm	U/C + C/C		
	40mm	1200 CS + CI	EI 90	flexible walls ≥ 100 mm	10 mm	25 mm	2 sides	-	176 mm	C/U + U/C + C/C		
					15 mm	25 mm	2 sides	-	186 mm	U/C + C/C		
	50mm	1200 CS + CI	EI 90	flexible walls ≥ 100 mm	10 mm	25 mm	2 sides	-	196 mm	C/U + U/C + C/C		
					15 mm	25 mm	2 sides	-	206 mm	U/C + C/C		
	60mm	1200 CS + CI	EI 90	flexible walls ≥ 100 mm	10 mm	25 mm	2 sides	-	216 mm	C/U + U/C + C/C		
					15 mm	25 mm	2 sides	-	226 mm	U/C + C/C		
	80mm	1200 CS + CI	EI 90	flexible walls ≥ 100 mm	10 mm	25 mm	2 sides	-	256 mm	C/U + U/C + C/C		
					15 mm	25 mm	2 sides	-	266 mm	U/C + C/C		
	80mm	1200 CS + CI	EI 240	rigid walls ≥ 150 mm	10 mm	25 mm	2 sides	-	256 mm	C/U + U/C + C/C		
					15 mm	25 mm	2 sides	-	266 mm	U/C + C/C		
max.												
Ø219,1	4,5	glass / rock wool 20mm	1200 CS + CI	EI 60	flexible walls ≥ 100 mm	10 mm	25 mm	2 sides	-	279 mm	C/U + U/C + C/C	
						10 mm	25 mm	2 sides	-	299 mm	C/U + U/C + C/C	
						10 mm	25 mm	2 sides	-	319 mm	C/U + U/C + C/C	
						10 mm	25 mm	2 sides	-	339 mm	C/U + U/C + C/C	
						10 mm	25 mm	2 sides	-	359 mm	C/U + U/C + C/C	
						10 mm	25 mm	2 sides	-	399 mm	C/U + U/C + C/C	

¹⁾ Penetration services must be supported; support distance ≤ 500mm.

²⁾ Pipe insulation must be fastened individually (not wrapped!) with steel wire: at max. 50mm + 300mm from constructive element.

³⁾ Constructive element must be classified acc. EN 13501-2 for the required fire resistance period. EI for flexible walls ≥100mm is also applicable for rigid walls ≥100mm!