

Notes:

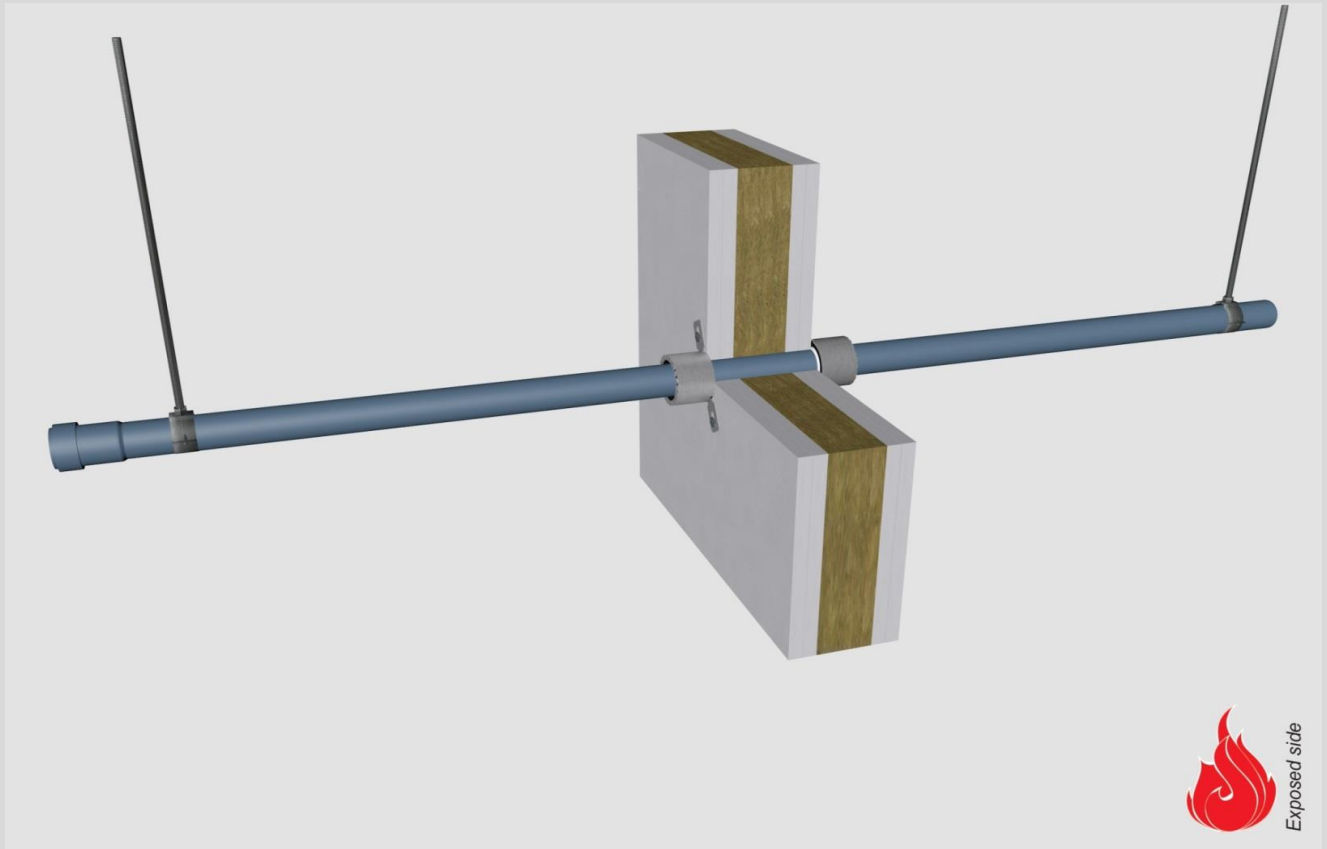
- installation instructions in [TDS](#)
- apply smoke seal Firetect Acrylic on 2 sides
- **other pipe dØ + s1** (thickness) are allowed within range and same pipe material
- EI for flexible walls ≥100mm is also applicable for **rigid walls** ≥100mm
- angle: perpendicular + all angles between 90° and 45°

principle detail

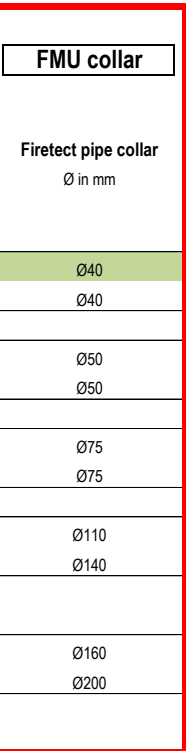
Firetect®

tested property
test method
service no.

fire resistance
EN 1366-3
19-62



PP-MD pipes



service type dØ (mm) s1 (mm)	pipe socket	EI	constructive element ²⁾	Firetect pipe collar Ø in mm	application 1 or 2 sides	finish required	max. opening in construction	pipe end configuration	max. angle
Ø32 1,8	-	EI 120	flexible walls ≥ 100 mm	Ø40	2 sides	*	32 mm	U/C + C/C	perpendicular + all angles between 90° and 45°
	-	EI 240	rigid walls ≥ 150 mm	Ø40	2 sides	*	32mm	U/C + C/C	
Ø50 2,0	-	EI 120	flexible walls ≥ 100 mm	Ø50	2 sides	*	50 mm	U/C + C/C	
	-	EI 180	rigid walls ≥ 150 mm	Ø50	2 sides	*	50 mm	U/C + C/C	
Ø75 2,6	-	EI 120	flexible walls ≥ 100 mm	Ø75	2 sides	*	75 mm	U/C + C/C	
	-	EI 240	rigid walls ≥ 150 mm	Ø75	2 sides	*	75 mm	U/C + C/C	
Ø110 3,8	-	EI 120	flexible walls ≥ 100 mm	Ø110	2 sides	*	110 mm	U/C + C/C	
	socket on 2 sides	EI 60	flexible walls ≥ 100 mm	Ø140	2 sides	*	135 mm	U/C + C/C	
max. Ø160 5,4	-	EI 60	flexible walls ≥ 100 mm	Ø160	2 sides	*	160 mm	U/C + C/C	
	socket on 2 sides	EI 60	flexible walls ≥ 100 mm	Ø200	2 sides	*	185 mm	U/C + C/C	

* smoke seal Acrylic on 2 sides

¹⁾ Penetration services must be supported; support distance ≤ 500mm.

²⁾ Constructive element must be classified acc. EN 13501-2 for the required fire resistance period. EI for flexible walls ≥100mm is also applicable for rigid walls ≥100mm!