

Notes:

- installation instructions in [TDS](#)
- apply smoke seal Firetect Acrylic on 2 sides
- **other pipe dØ + s1** (thickness) are allowed within range and same pipe material
- EI for flexible walls ≥100mm is also applicable for **rigid walls** ≥100mm
- angle: perpendicular + all angles between 90° and 45°

principle detail

Firetect®

tested property

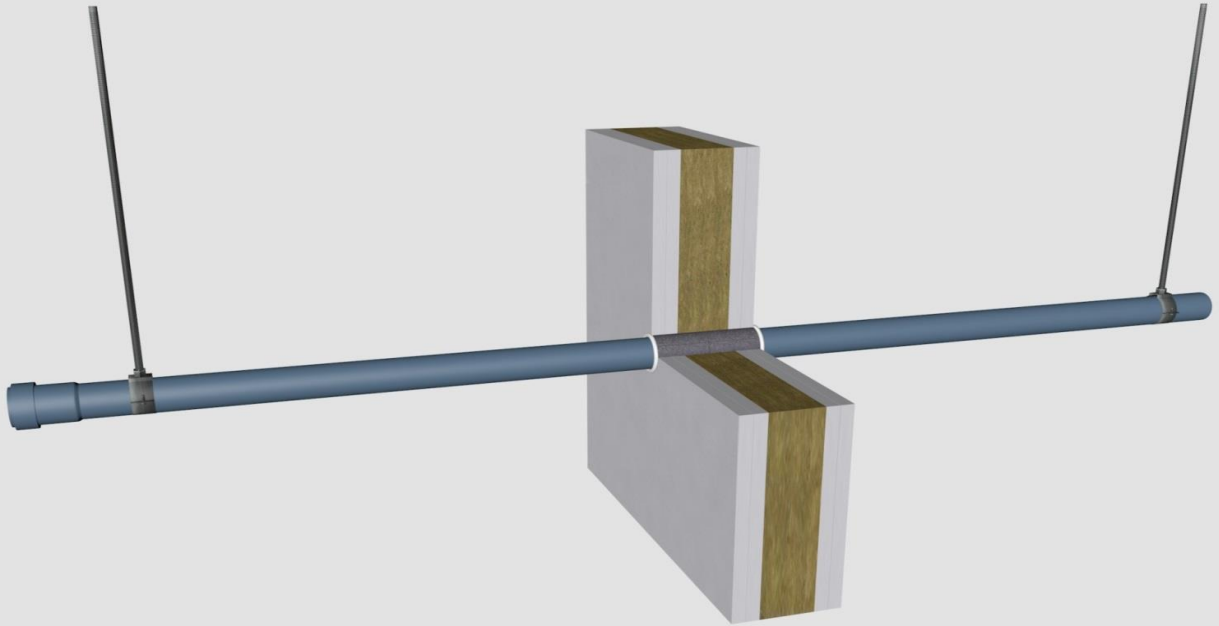
fire resistance

test method

EN 1366-3

service no.

19-61



PP-MD pipes

Wrap	
length	no. of layers
TT x Ø x	1
TT x Ø x	2
TT x Ø x	1
TT x Ø x	1
TT x Ø x	2
TT x Ø x	3

service type	pipe socket	EI	constructive element ²⁾	Firetect pipe wrap	application	finish	max. opening	pipe end	max. angle
dØ (mm) s1 (mm)				length TT x Ø x no. of layers	1 or 2 sides	required	in construction	configuration	
Ø32	1,8	-	flexible walls ≥ 100 mm	TT x Ø x 1	2 sides	*	36 mm	U/C + C/C	perpendicular + all angles between 90° and 45°
			rigid walls ≥ 150 mm	TT x Ø x 2	2 sides	*	44 mm	U/C + C/C	
Ø50	2,0	-	flexible walls ≥ 100 mm	TT x Ø x 1	2 sides	*	55 mm	U/C + C/C	
			rigid walls ≥ 150 mm	TT x Ø x 1	2 sides	*	54 mm	U/C + C/C	
Ø75	2,6	-	flexible walls ≥ 100 mm	TT x Ø x 1	2 sides	*	79 mm	U/C + C/C	
			rigid walls ≥ 150 mm	TT x Ø x 1	2 sides	*	79 mm	U/C + C/C	
max.	3,8	-	flexible walls ≥ 100 mm	TT x Ø x 2	2 sides	*	118 mm	U/C + C/C	
			flexible walls ≥ 100 mm	TT x Ø x 3	2 sides	*	160 mm	U/C + C/C	

* smoke seal Acrylic on 2 sides

¹⁾ Penetration services must be supported; support distance ≤ 500mm.

²⁾ Constructive element must be classified acc. EN 13501-2 for the required fire resistance period. EI for flexible walls ≥100mm is also applicable for rigid walls ≥100mm!