

**Notes:**

- installation instructions in [TDS](#)
- apply joint seal in opening, flush with wall on 2 sides
- **other pipe dØ + s1** (thickness) are allowed within range and same pipe material
- EI for flexible walls ≥100mm is also applicable for **rigid walls** ≥100mm
- angle: perpendicular + all angles between 90° and 45°

**principle detail**

**Firetect®**

tested property

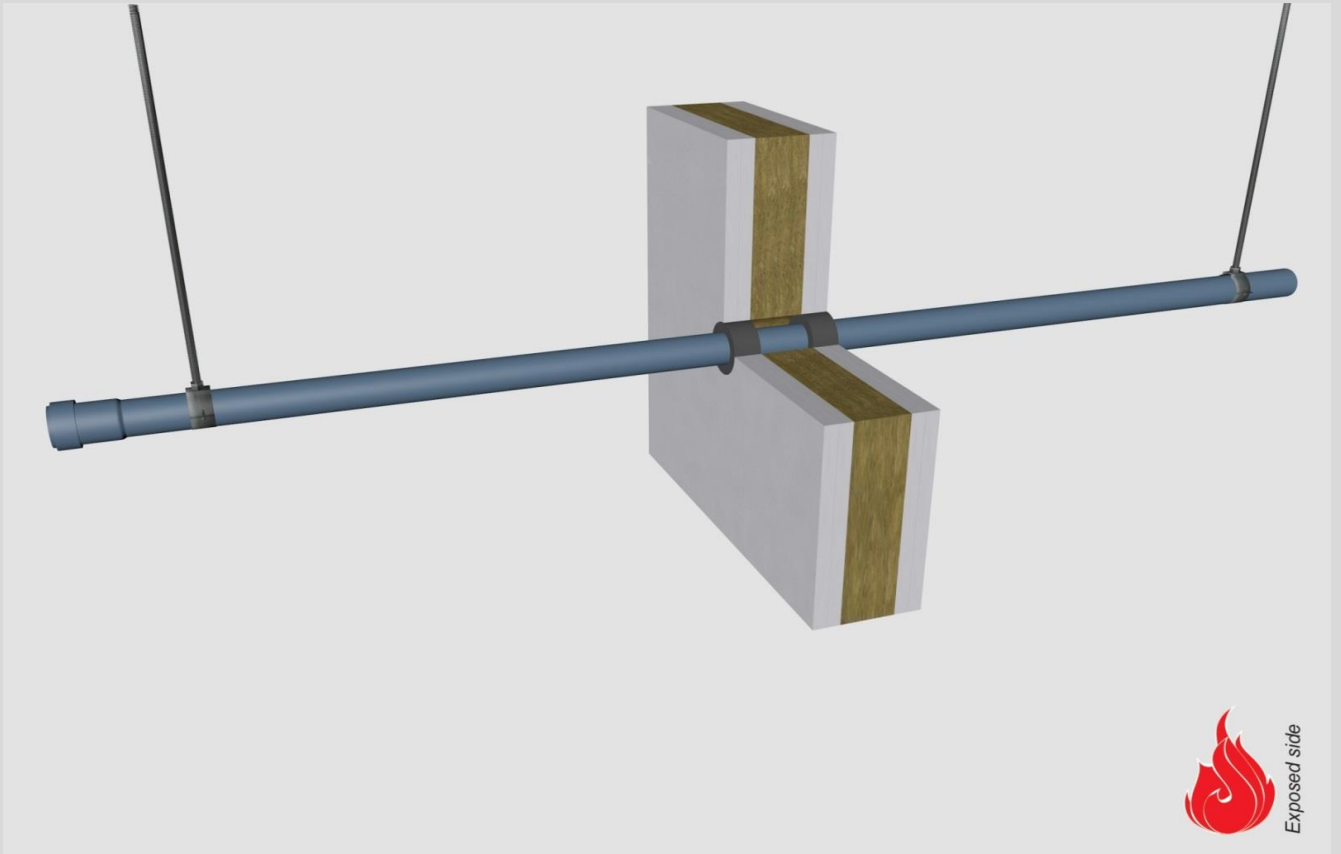
fire resistance

test method

EN 1366-3

service no.

19-60



**PP-MD pipes**

**Graphite sealant**

service type dØ (mm)    s1 (mm)	pipe socket	EI	constructive element <sup>2)</sup>	Firetect joint seal		application 1 or 2 sides	backing required	max. opening in construction	pipe end configuration	max. angle
				width	depth					
Ø32    1,8	-	EI <b>120</b>	flexible walls ≥ 100 mm	10 mm	25 mm	2 sides	-	52 mm	U/C + C/C	perpendicular + all angles between 90° and 45°
	-	EI <b>240</b>	rigid walls ≥ 150 mm	15 mm	25 mm	2 sides	-	62 mm	U/C + C/C	
Ø50    2,0	-	EI <b>90</b>	flexible walls ≥ 100 mm	10 mm	25 mm	2 sides	-	70 mm	U/C + C/C	
	-	EI <b>180</b>	rigid walls ≥ 150 mm	15 mm	25 mm	2 sides	-	80 mm	U/C + C/C	
Ø75    2,6	-	EI <b>60</b>	flexible walls ≥ 100 mm	10 mm	25 mm	2 sides	*	95 mm	U/C + C/C	
	-	EI <b>240</b>	rigid walls ≥ 150 mm	15 mm	25 mm	2 sides	-	105 mm	U/C + C/C	
<b>max.</b>										
Ø110    3,8	-	EI <b>60</b>	flexible walls ≥ 100 mm	10 mm	25 mm	2 sides	-	130 mm	U/C + C/C	

<sup>1)</sup> Penetration services must be supported; support distance ≤ 500mm.

<sup>2)</sup> Constructive element must be classified acc. EN 13501-2 for the required fire resistance period. EI for flexible walls ≥100mm is also applicable for rigid walls ≥100mm!