

**Notes:**

- installation instructions in [TDS](#)
- apply smoke seal Firetect Acrylic on 2 sides
- **other pipe dØ + s1** (thickness) are allowed within range and same pipe material
- EI for flexible walls ≥100mm is also applicable for **rigid walls** ≥100mm
- angle: perpendicular + all angles between 90° and 45°
- 'eccentric to zero' position in opening is allowed

**principle detail**

**Firetect®**

tested property

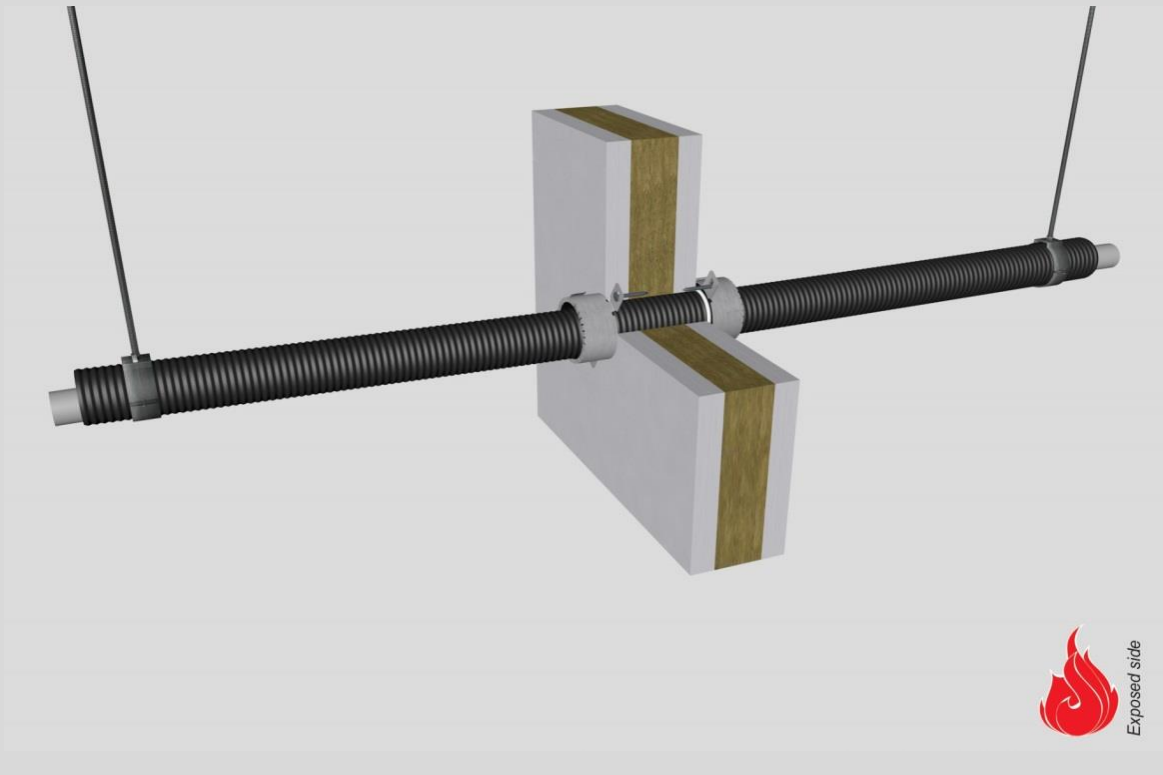
fire resistance

test method

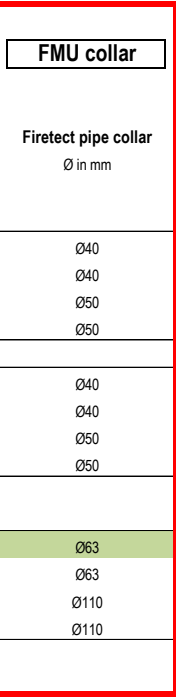
EN 1366-3

service no.

19-58



**PE-Xa pipes**



service type		pipe insulation	EI	constructive element <sup>2)</sup>	Firetect pipe collar	application	finish	max. opening	pipe end configuration	max. angle	
dØ (mm)	s1 (mm)	min. 28 kg/m <sup>3</sup> eg Uponor			Ø in mm	1 or 2 sides	required	in construction			
Ø15/28	2,5	-	EI 60	flexible walls ≥ 100 mm	Ø40	2 sides	*	28 mm	U/C + C/C	perpendicular + all angles between 90° and 45°	
		-	EI 240	rigid walls ≥ 150 mm	Ø40	2 sides	*	28 mm	U/C + C/C		
		polyolefin 10mm	1200 CS + CI	EI 120	flexible walls ≥ 100 mm	Ø50	2 sides	*	48 mm		U/C + C/C
		polyolefin 10mm	1200 CS + CI	EI 120	rigid walls ≥ 150 mm	Ø50	2 sides	*	48 mm		U/C + C/C
Ø16/25	2,2	-	EI 120	flexible walls ≥ 100 mm	Ø40	2 sides	*	25 mm	U/C + C/C		
		-	EI 240	rigid walls ≥ 150 mm	Ø40	2 sides	*	25 mm	U/C + C/C		
		polyolefin 10mm	1200 CS + CI	EI 120	flexible walls ≥ 100 mm	Ø50	2 sides	*	45 mm		U/C + C/C
		polyolefin 10mm	1200 CS + CI	EI 120	rigid walls ≥ 150 mm	Ø50	2 sides	*	45 mm		U/C + C/C
<b>max.</b>											
Ø32/54	4,4	-	EI 120	flexible walls ≥ 100 mm	Ø63	2 sides	*	54 mm	U/C + C/C		
		-	EI 240	rigid walls ≥ 150 mm	Ø63	2 sides	*	54 mm	U/C + C/C		
		polyolefin 20mm	1200 CS + CI	EI 60	flexible walls ≥ 100 mm	Ø110	2 sides	*	94 mm	U/C + C/C	
		polyolefin 20mm	1200 CS + CI	EI 240	rigid walls ≥ 150 mm	Ø110	2 sides	*	94 mm	U/C + C/C	

\* smoke seal Acrylic on 2 sides

<sup>1)</sup> Penetration services must be supported; support distance ≤ 500mm.

<sup>2)</sup> Constructive element must be classified acc. EN 13501-2 for the required fire resistance period. EI for flexible walls ≥100mm is also applicable for rigid walls ≥100mm!