

Notes:

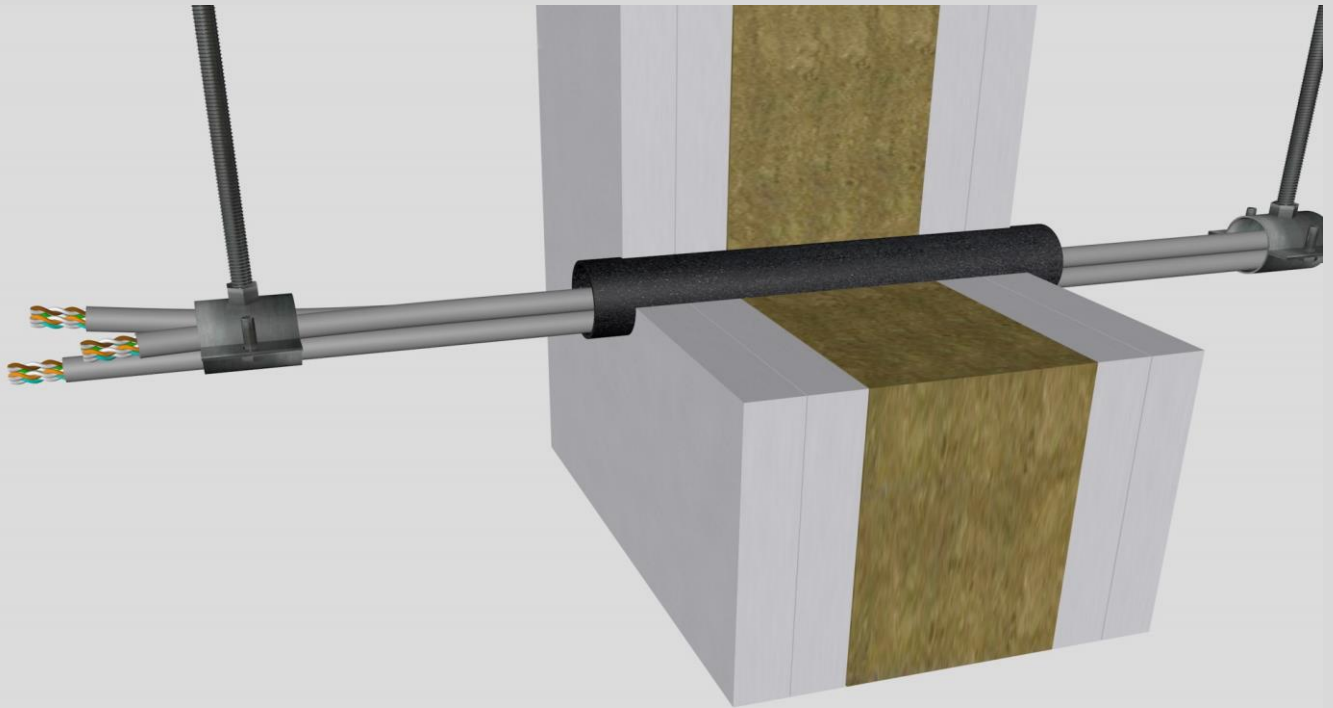
- installation instructions in [TDS](#)
- **other cable dØ** are allowed within group type (and same conduit material)
- EI for flexible walls ≥100mm is also applicable for **rigid walls** ≥100mm

principle detail

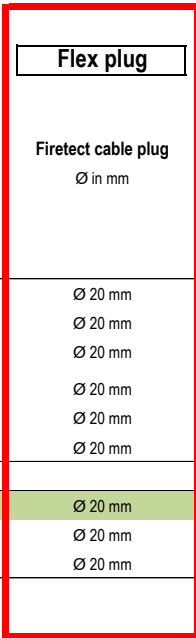
Firetect®

tested property
test method
service no.

fire resistance
EN 1366-3
19-46



cables



bundle dØ (mm)	cable specs ¹⁾ group	conduit	assembly Cu (mm ²)	EI	constructive element ²⁾	Flex plug	application 1 or 2 sides	finish required	max. opening in construction
						Firetect cable plug Ø in mm			
max. Ø20	group 1 - small sheathed ≤ Ø 20mm	-	208	EI 120	flexible walls ≥ 100 mm	Ø 20 mm	centrally	-	Ø20
		-	208	EI 240	rigid walls ≥ 150 mm	Ø 20 mm	centrally	-	Ø20
		-	208	EI 240	rigid floors ≥ 150 mm	Ø 20 mm	centrally	-	Ø20
	PE conduit	208	EI 90	flexible walls ≥ 100 mm	Ø 20 mm	centrally	-	Ø20	
	PE conduit	208	EI 240	rigid walls ≥ 150 mm	Ø 20 mm	centrally	-	Ø20	
	PE conduit	208	EI 240	rigid floors ≥ 150 mm	Ø 20 mm	centrally	-	Ø20	
Ø20	group 4 - data + fibre optic	-	183	EI 120	flexible walls ≥ 100 mm	Ø 20 mm	centrally	-	Ø20
		-	183	EI 240	rigid walls ≥ 150 mm	Ø 20 mm	centrally	-	Ø20
		-	183	EI 240	rigid floors ≥ 150 mm	Ø 20 mm	centrally	-	Ø20

¹⁾ Penetration services must be supported; support distance ≤ 500mm (wall) or ≤ 400mm (floor).

²⁾ Constructive element must be classified acc. EN 13501-2 for the required fire resistance period. EI for flexible walls ≥100mm is also applicable for rigid walls ≥100mm!