

**Notes:**

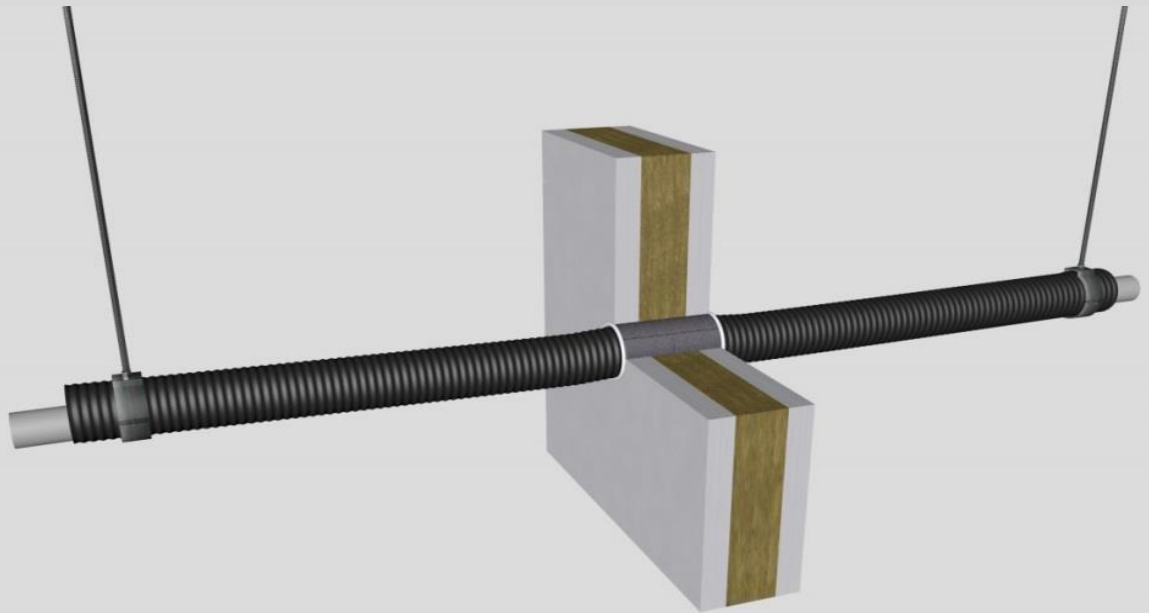
- installation instructions in [TDS](#)
- apply smoke seal Firetect Acrylic on 2 sides
- **other pipe dØ + s1** (thickness) are allowed within range and same pipe material
- EI for flexible walls ≥100mm is also applicable for **rigid walls** ≥100mm
- angle: perpendicular + all angles between 90° and 45°
- 'eccentric to zero' position in opening is allowed

principle detail

**Firetect®**

tested property  
test method  
service no.

fire resistance  
EN 1366-3  
**19-17**



**PE-Xa pipes**

Wrap	
Firetect pipe wrap length	no. of layers
π x Ø x	1
π x Ø x	1
π x Ø x	2
π x Ø x	2

service type <sup>1)</sup> dØ (mm) s1 (mm)	pipe insulation min. 28 kg/m <sup>3</sup> eg Uponor	EI	constructive element <sup>2)</sup>	Firetect pipe wrap length π x Ø x no. of layers	application 1 or 2 sides	finish required	max. opening in construction	pipe end configuration	max. angle	
<b>up to</b> Ø15/28 2,5	-	EI <b>120</b>	flexible walls ≥ 100 mm	π x Ø x 1	2 sides	*	32 mm	U/C + C/C	perpendicular + all angles between 90° and 45°	
	-	EI <b>240</b>	rigid walls ≥ 150 mm	π x Ø x 1	2 sides	*	32 mm	U/C + C/C		
	polyolefin 10mm	1200 CS + Cl	EI <b>120</b>	flexible walls ≥ 100 mm	π x Ø x 2	2 sides	*	56 mm		U/C + C/C
	polyolefin 10mm	1200 CS + Cl	EI <b>240</b>	rigid walls ≥ 150 mm	π x Ø x 2	2 sides	*	63 mm		U/C + C/C
<b>up to</b> Ø16/25 2,2	-	EI <b>120</b>	flexible walls ≥ 100 mm	π x Ø x 1	2 sides	*	29 mm	U/C + C/C		
	-	EI <b>240</b>	rigid walls ≥ 150 mm	π x Ø x 1	2 sides	*	32 mm	U/C + C/C		
	polyolefin 10mm	1200 CS + Cl	EI <b>120</b>	flexible walls ≥ 100 mm	π x Ø x 1	2 sides	*	49 mm		U/C + C/C
	polyolefin 10mm	1200 CS + Cl	EI <b>240</b>	rigid walls ≥ 150 mm	π x Ø x 2	2 sides	*	63 mm		U/C + C/C
<b>max.</b> Ø32/54 4,4	-	EI <b>120</b>	flexible walls ≥ 100 mm	π x Ø x 1	2 sides	*	58 mm	U/C + C/C		
	-	EI <b>240</b>	rigid walls ≥ 150 mm	π x Ø x 1	2 sides	*	63 mm	U/C + C/C		
	polyolefin 20mm	1200 CS + Cl	EI <b>90</b>	flexible walls ≥ 100 mm	π x Ø x 2	2 sides	*	102 mm		U/C + C/C
	polyolefin 10mm	1200 CS + Cl	EI <b>240</b>	rigid walls ≥ 150 mm	π x Ø x 2	2 sides	*	102 mm		U/C + C/C

\* smoke seal Acrylic on 2 sides

<sup>1)</sup> Penetration services must be supported; support distance ≤ 500mm.  
<sup>2)</sup> Constructive element must be classified acc. EN 13501-2 for the required fire resistance period. EI for flexible walls ≥100mm is also applicable for rigid walls ≥100mm!