

Notes:

- installation instructions in [TDS](#)
- apply smoke seal Firetect Acrylic on 2 sides
- **other pipe dØ + s1** (thickness) are allowed within range and same pipe material
- EI for flexible walls ≥100mm is also applicable for **rigid walls** ≥100mm
- angle: perpendicular + all angles between 90° and 45°

principle detail

Firetect®

tested property

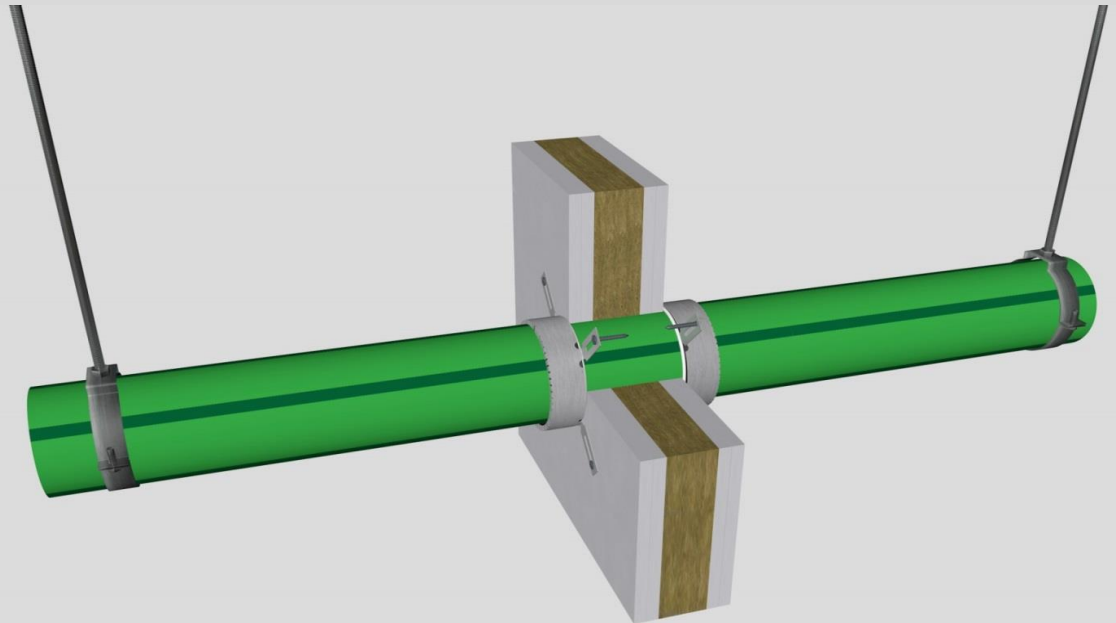
fire resistance

test method

EN 1366-3

service no.

19-12



PP-R pipes

FMU collar

service type		EI	constructive element ²⁾	Firetect pipe collar Ø in mm	application	finish required	max. opening in construction	pipe end configuration	max. angle
dØ (mm)	s1 (mm)								
Ø40	min. 3,7	EI 120	flexible walls ≥ 100 mm	Ø40	2 sides	*	40 mm	U/C + C/C	perpendicular + all angles between 90° and 45°
		EI 240	rigid walls ≥ 150 mm	Ø40	2 sides	*	40 mm	U/C + C/C	
	max. 5,5	EI 60	flexible walls ≥ 100 mm	Ø40	2 sides	*	40 mm	U/C + C/C	
		EI 180	rigid walls ≥ 150 mm	Ø40	2 sides	*	40 mm	U/C + C/C	
Ø63	min. 5,8	EI 90	flexible walls ≥ 100 mm	Ø63	2 sides	*	63 mm	U/C + C/C	
		EI 120	rigid walls ≥ 150 mm	Ø63	2 sides	*	63 mm	U/C + C/C	
	max. 8,6	EI 90	flexible walls ≥ 100 mm	Ø63	2 sides	*	63 mm	U/C + C/C	
		EI 120	rigid walls ≥ 150 mm	Ø40	2 sides	*	63 mm	U/C + C/C	
Ø75	min. 6,8	EI 90	flexible walls ≥ 100 mm	Ø75	2 sides	*	75 mm	U/C + C/C	
		EI 120	rigid walls ≥ 150 mm	Ø75	2 sides	*	75 mm	U/C + C/C	
	max. 10,3	EI 90	flexible walls ≥ 100 mm	Ø75	2 sides	*	75 mm	U/C + C/C	
		EI 120	rigid walls ≥ 150 mm	Ø75	2 sides	*	75 mm	U/C + C/C	
max.									
Ø110	min. 10	EI 60	flexible walls ≥ 100 mm	Ø110	2 sides	*	110 mm	U/C + C/C	
		EI 60	rigid walls ≥ 150 mm	Ø110	2 sides	*	110 mm	U/C + C/C	
	max. 15,1	EI 60	flexible walls ≥ 100 mm	Ø110	2 sides	*	110 mm	U/C + C/C	
		EI 60	rigid walls ≥ 150 mm	Ø110	2 sides	*	110 mm	U/C + C/C	

* smoke seal Acrylic on 2 sides

¹⁾ Penetration services must be supported; support distance ≤ 500mm.

²⁾ Constructive element must be classified acc. EN 13501-2 for the required fire resistance period. EI for flexible walls ≥100mm is also applicable for rigid walls ≥100mm!