

**Notes:**

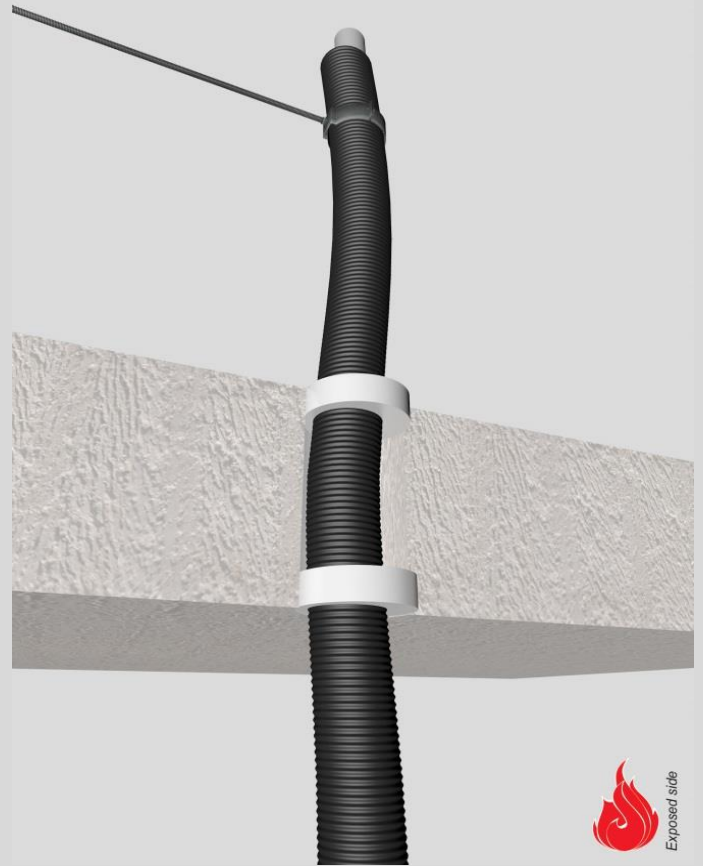
- installation instructions in [TDS](#)
- apply joint seal in opening, flush with wall/floor on 2 sides
- **other pipe dØ + s1** (thickness) are allowed within range and same pipe material
- EI for flexible walls ≥100mm is also applicable for **rigid walls** ≥100mm
- angle: perpendicular + all angles between 90° and 45°
- 'eccentric to zero' position in opening is allowed

**principle detail**

**Firetect®**

tested property  
test method  
service no.

fire resistance  
EN 1366-3  
17-3-9



**PE-Xa pipes**

**Acrylic sealant**

service type dØ (mm)    s1 (mm)	pipe insulation	EI	constructive element <sup>2)</sup>	Firetect joint seal		application 1 or 2 sides	backing required	max. opening in construction	pipe end configuration	max. angle
				width	depth					
<b>up to</b> Ø15/28    2,5	-	EI <b>90</b>	flexible walls ≥ 100 mm	10 mm	25 mm	2 sides	-	48 mm	U/C + C/C	perpendicular + all angles between 90° and 45°
	-	EI <b>240</b>	rigid walls ≥ 150 mm	15 mm	25 mm	2 sides	-	58 mm	U/C + C/C	
	-	EI <b>240</b>	rigid floors ≥ 150 mm	15 mm	25 mm	2 sides	-	58 mm	U/C + C/C	
Ø16/25    2,2	-	EI <b>120</b>	flexible walls ≥ 100 mm	10 mm	25 mm	2 sides	-	45 mm	U/C + C/C	
	-	EI <b>240</b>	rigid walls ≥ 150 mm	15 mm	25 mm	2 sides	-	55 mm	U/C + C/C	
	-	EI <b>240</b>	rigid floors ≥ 150 mm	15 mm	25 mm	2 sides	-	55 mm	U/C + C/C	
<b>max.</b> Ø32/54    4,4	-	EI <b>60</b>	flexible walls ≥ 100 mm	10 mm	25 mm	2 sides	-	74 mm	U/C + C/C	
	-	EI <b>180</b>	rigid walls ≥ 150 mm	15 mm	25 mm	2 sides	-	84 mm	U/C + C/C	
	-	EI <b>180</b>	rigid floors ≥ 150 mm	15 mm	25 mm	2 sides	-	84 mm	U/C + C/C	

<sup>1)</sup> Penetration services must be supported; support distance ≤ 500mm (wall) or ≤ 400mm (floor).

<sup>2)</sup> Constructive element must be classified acc. EN 13501-2 for the required fire resistance period. EI for flexible walls ≥100mm is also applicable for rigid walls ≥100mm!