

**Notes:**

- installation instructions in [TDS](#)
- apply joint seal in opening, flush with floor on 2 sides
- **other pipe dØ + s1** (thickness) are allowed within range and same pipe material
- angle: perpendicular + all angles between 90° and 45°

principle detail

**Firetect®**

tested property

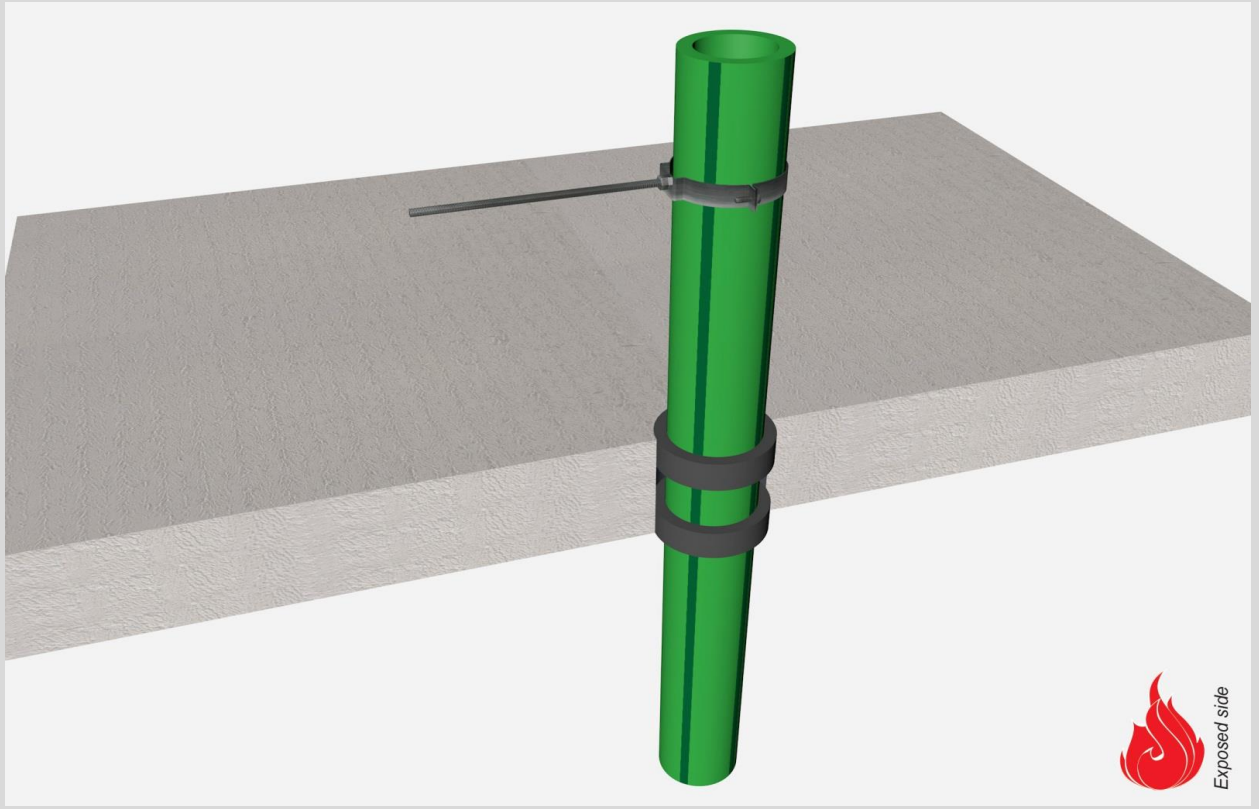
fire resistance

test method

EN 1366-3

service no.

17-1-6



**PP-R pipes**

**Graphite sealant**

service type		pipe insulation min. 28 kg/m <sup>3</sup> eg Uponor	EI	constructive element <sup>2)</sup>	Firetect joint seal		application 1 or 2 sides	backing required	max. opening in construction	pipe end configuration	max. angle
dØ (mm)	s1 (mm)				width	depth					
Ø40	min. 3,7	-	EI 240	rigid floors ≥ 150 mm	15 mm	40 mm	2 sides	-	70 mm	U/C + C/C	perpendicular + all angles between 90° and 45°
	max. 5,5	-	EI 240	rigid floors ≥ 150 mm	15 mm	40 mm	2 sides	-	70 mm	U/C + C/C	
Ø63	min. 5,8	-	EI 240	rigid floors ≥ 150 mm	15 mm	40 mm	2 sides	-	93 mm	U/C + C/C	
	max. 8,6	-	EI 180	rigid floors ≥ 150 mm	15 mm	40 mm	2 sides	-	93 mm	U/C + C/C	
	5,8	<a href="#">polyolefin 25mm</a>	750 LS + LI + CS + CI	EI 60	rigid floors ≥ 150 mm	15 mm	40 mm	2 sides	-	600 x 800 mm	
Ø75	min. 6,8	-	EI 240	rigid floors ≥ 150 mm	15 mm	40 mm	2 sides	-	105 mm	U/C + C/C	
	max. 10,3	-	EI 180	rigid floors ≥ 150 mm	15 mm	40 mm	2 sides	-	105 mm	U/C + C/C	
<b>max.</b>											
Ø110	min. 10	-	EI 180	rigid floors ≥ 150 mm	15 mm	40 mm	2 sides	-	140 mm	U/C + C/C	
	max. 15,1	-	EI 90	rigid floors ≥ 150 mm	15 mm	40 mm	2 sides	-	140 mm	U/C + C/C	

in PA board 2S 50 mm

<sup>1)</sup> Penetration services must be supported; support distance ≤ 400mm.

<sup>3)</sup> Constructive element must be classified acc. EN 13501-2 for the required fire resistance period.