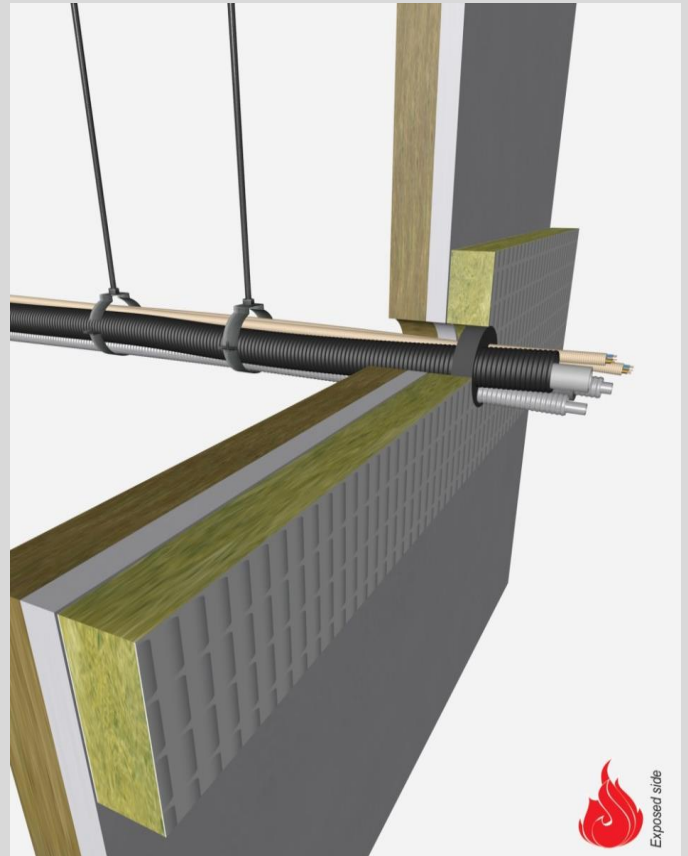


**Notes:**

- installation instructions in [TDS](#)
- apply joint seal in opening, flush with wall/floor on 2 sides
- **other cable dØ** are allowed within group type and same conduit material
- EI for flexible walls ≥100mm is also applicable for **rigid walls** ≥100mm



**cables**

**Graphite sealant**

bundle dØ (mm)	cable specs <sup>1)</sup> group	conduit	assembly Cu (mm <sup>2</sup> )	EI	constructive element <sup>2)</sup>	Firetect joint seal		application 1 or 2 sides	backing required	max. opening in construction
						width	depth			
<b>max.</b> Ø121	group 1 - small sheathed ≤ Ø 21mm	-	<b>max.</b> 9309	EI <b>120</b>	flexible walls ≥ 100 mm	30 mm	25 mm	2 sides	50 mm RW	Ø170
		PVC-U conduit *	730	EI <b>120</b>	flexible walls ≥ 100 mm	10 mm	25 mm	2 sides	-	Ø110
		hdPE conduit	621	EI <b>120</b>	flexible walls ≥ 100 mm	15 mm	25 mm	2 sides	-	Ø102
		PVC-U conduit *	487	EI <b>60</b>	shaft walls ≥ 75 mm	10 mm	25 mm	2 sides	-	300 x 1200 mm
		hdPE conduit	621	EI <b>120</b>	flexible ceilings ≥ 150 mm	15 mm	25 mm	2 sides	-	Ø102
		PP-MD conduit *	487	EI <b>240</b>	rigid floors ≥ 150 mm	-	40 mm	2 sides	-	Ø110
	hdPE conduit	621	EI <b>120</b>	rigid floors ≥ 150 mm	15 mm	25 mm	2 sides	-	Ø102	
<b>max.</b> Ø121	group 2 - medium sheathed ≤ Ø 50mm	hdPE conduit	621	EI <b>120</b>	flexible walls ≥ 100 mm	15 mm	25 mm	2 sides	-	Ø102
		hdPE conduit	621	EI <b>120</b>	flexible ceilings ≥ 150 mm	15 mm	25 mm	2 sides	-	Ø102
		hdPE conduit	621	EI <b>120</b>	rigid floors ≥ 150 mm	15 mm	25 mm	2 sides	-	Ø102

in PA board 2S 50 mm

\* Both rigid + corrugated conduits. 'eccentric to zero' position in opening is allowed.

<sup>1)</sup> Penetration services must be supported; support distance ≤ 500mm (wall) or ≤ 400mm (floor).

<sup>2)</sup> Constructive element must be classified acc. EN 13501-2 for the required fire resistance period. EI for flexible walls ≥100mm is also applicable for **rigid walls** ≥100mm!