

Notes:

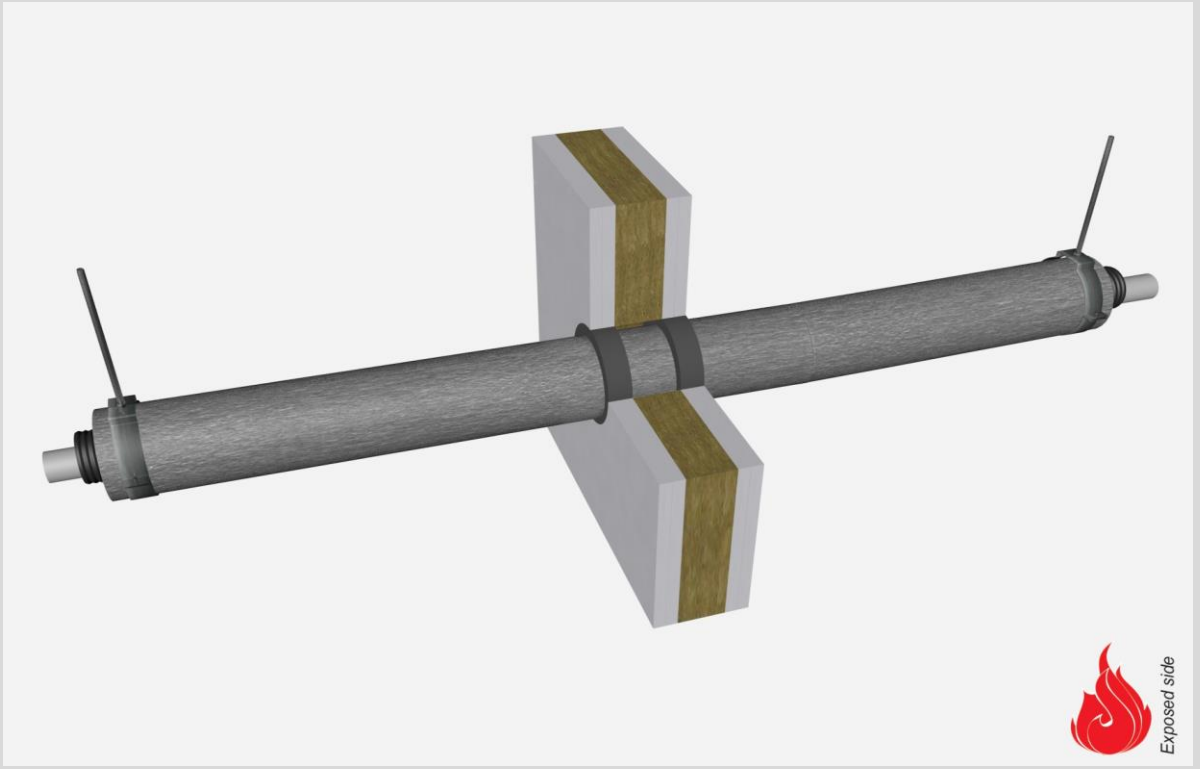
- installation instructions in [TDS](#)
- apply joint seal in opening, flush with wall on 2 sides
- other pipe $d\varnothing + s1$ (thickness) are allowed within range and same pipe material
- EI for flexible walls $\geq 100\text{mm}$ is also applicable for rigid walls $\geq 100\text{mm}$
- angle: perpendicular + all angles between 90° and 45°
- 'eccentric to zero' position in opening is allowed

principle detail

Firetect®

tested property
test method
service no.

fire resistance
EN 1366-3
15-49



PE-Xa pipes

Graphite sealant

service type dØ (mm) s1 (mm)	pipe insulation min. 28 kg/m ³ eg Uponor	EI	constructive element ²⁾	Firetect joint seal		application 1 or 2 sides	backing required	max. opening in construction	pipe end configuration	
				width	depth					
Ø15/28 2x bundled	-	EI 90	flexible walls ≥ 100 mm	10 mm	25 mm	2 sides	-	48 mm	U/C + C/C	
	-	EI 240	rigid walls ≥ 150 mm	15 mm	25 mm	2 sides	-	58 mm	U/C + C/C	
	-	EI 60	shaft walls ≥ 75 mm	10 mm	25 mm	2 sides	-	300 x 1200 mm	U/C + C/C	
	polyolefin 10mm	1200 CS + CI	EI 120	flexible walls ≥ 100 mm	10 mm	25 mm	2 sides	-	68 mm	U/C + C/C
	polyolefin 10mm	1200 CS + CI	EI 240	rigid walls ≥ 150 mm	15 mm	25 mm	2 sides	-	78 mm	U/C + C/C
	polyolefin 10mm	1200 CS + CI	EI 60	shaft walls ≥ 75 mm	10 mm	25 mm	2 sides	-	300 x 1200 mm	U/C + C/C
Ø16/25	-	EI 120	flexible walls ≥ 100 mm	10 mm	25 mm	2 sides	-	45 mm	U/C + C/C	
	-	EI 240	rigid walls ≥ 150 mm	15 mm	25 mm	2 sides	-	55 mm	U/C + C/C	
	polyolefin 10mm	1200 CS + CI	EI 120	flexible walls ≥ 100 mm	10 mm	25 mm	2 sides	-	65 mm	U/C + C/C
	polyolefin 10mm	1200 CS + CI	EI 240	rigid walls ≥ 150 mm	15 mm	25 mm	2 sides	-	75 mm	U/C + C/C
max. Ø32/54	-	EI 120	flexible walls ≥ 100 mm	10 mm	25 mm	2 sides	-	74 mm	U/C + C/C	
	-	EI 240	rigid walls ≥ 150 mm	15 mm	25 mm	2 sides	-	84 mm	U/C + C/C	
	-	EI 60	shaft walls ≥ 75 mm	10 mm	25 mm	2 sides	-	300 x 1200 mm	U/C + C/C	
	polyolefin 20mm	1200 CS + CI	EI 90	flexible walls ≥ 100 mm	10 mm	25 mm	2 sides	-	144 mm	U/C + C/C
	polyolefin 20mm	1200 CS + CI	EI 120	rigid walls ≥ 150 mm	15 mm	25 mm	2 sides	-	124 mm	U/C + C/C

perpendicular +
all angles
between 90°
and 45°

on PA board 2S 50 mm

¹⁾ Penetration services must be supported; support distance $\leq 500\text{mm}$.

²⁾ Constructive element must be classified acc. EN 13501-2 for the required fire resistance period. EI for flexible walls $\geq 100\text{mm}$ is also applicable for rigid walls $\geq 100\text{mm}$!