

**Notes:**

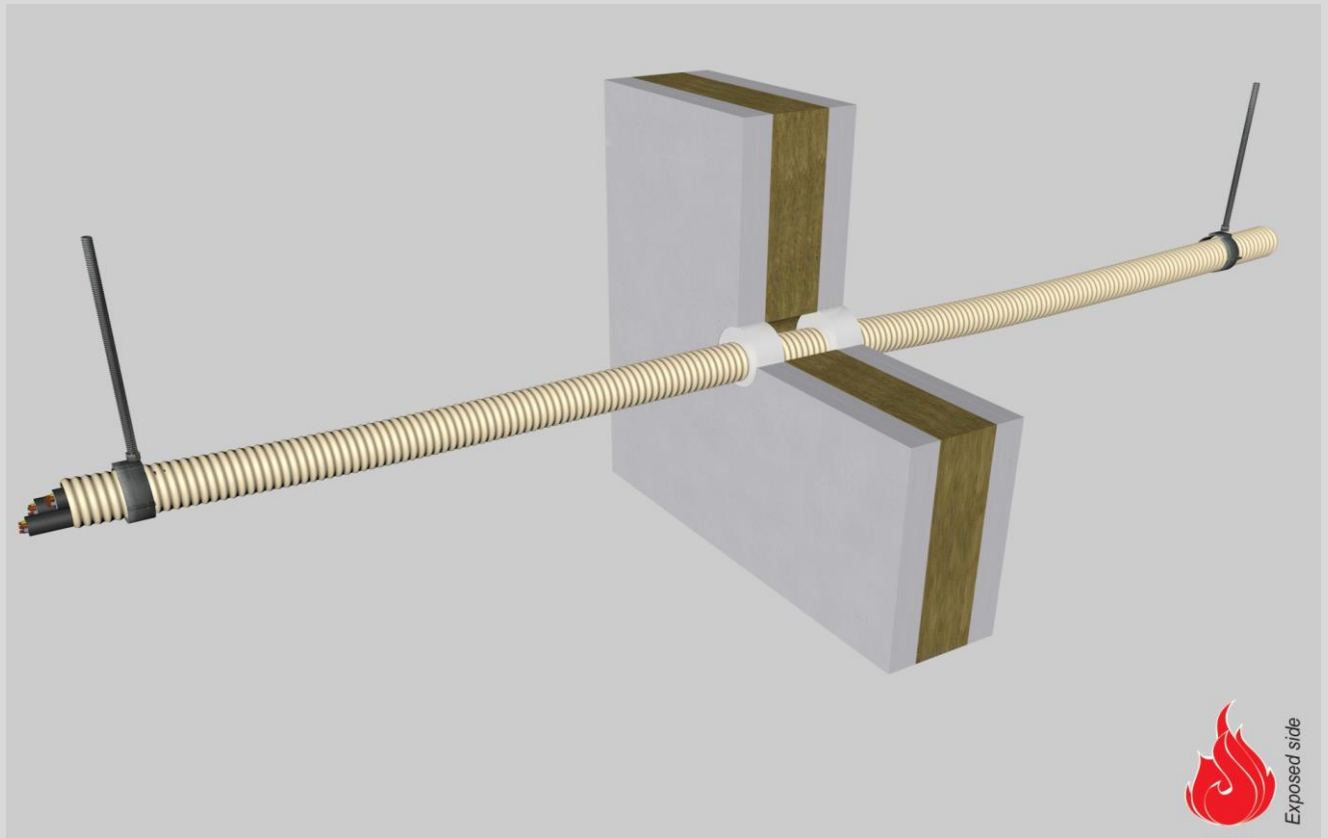
- installation instructions in [TDS](#)
- apply joint seal in opening, flush with wall/floor on 2 sides
- **other cable dØ** are allowed within range and same conduit material
- EI for flexible walls ≥100mm is also applicable for **rigid walls** ≥100mm

**principle detail**

**Firetect®**

tested property  
test method  
service no.

fire resistance  
EN 1366-3  
15-41



## PE/PVC pipes + cables in conduits

**Acrylic sealant**

bundle dØ (mm)	cable specs <sup>1)</sup> group	conduit	assembly Cu (mm <sup>2</sup> )	EI	constructive element <sup>2)</sup>	Firetect joint seal		application 1 or 2 sides	backing required	max. opening in construction
						width	depth			
up to Ø16	group 1 - small sheathed ≤ Ø 16mm	-	208	EI 120	flexible walls ≥ 100 mm	10 mm	25 mm	2 sides	-	Ø32
	<blank>	PE conduit	-	EI 120	flexible walls ≥ 100 mm	8 mm bead		2 sides	-	Ø18
	<blank>	PE conduit	-	EI 120	flexible walls ≥ 100 mm	10 mm	25 mm	2 sides	-	450x200 mm
	group 1 - small sheathed ≤ Ø 16mm	PE conduit	208	EI 120	rigid walls ≥ 150 mm	8 mm bead		2 sides	-	Ø16
Ø20	group 1 - small sheathed ≤ Ø 20mm	PVC-U conduit *	314	EI 60	flexible walls ≥ 100 mm	10 mm	25 mm	2 sides	-	Ø36
Ø31	group 1 - small sheathed ≤ Ø 21mm	PVC conduit	767	EI 240	rigid walls ≥ 150 mm	30 mm	15 mm	2 sides	RW	Ø85
	group 2 - medium sheathed ≤ Ø 31mm	PVC conduit	767	EI 240	rigid walls ≥ 150 mm	30 mm	15 mm	2 sides	RW	Ø85
Ø40	group 1 - small sheathed ≤ Ø 21mm	PVC conduit *	570	EI 90	flexible walls ≥ 100 mm	10 mm	25 mm	2 sides	-	Ø52
Ø50	<blank>	PVC pipe	-	EI 120	flexible walls ≥ 100 mm	10 mm	25 mm	2 sides	-	Ø70
Ø55	group 1 - small sheathed ≤ Ø 21mm	PVC conduit *	1056	EI 180	rigid walls ≥ 150 mm	15 mm	25 mm	2 sides	-	Ø82
	group 1 - small sheathed ≤ Ø 21mm	PVC-U conduit *	1056	EI 180	rigid walls ≥ 150 mm	15 mm	25 mm	2 sides	-	Ø82
<b>max.</b>	group 1 - small sheathed ≤ Ø 13mm	-	5137	EI 120	flexible walls ≥ 100 mm	10 mm	25 mm	2 sides	-	Ø110

in PA board 2S 50 mm

\* Both rigid + corrugated conduits. 'Eccentric to zero' position in opening is allowed.

<sup>1)</sup> Penetration services must be supported; support distance ≤ 500mm (wall) or ≤ 400mm (floor).

<sup>2)</sup> Constructive element must be classified acc. EN 13501-2 for the required fire resistance period. EI for flexible walls ≥100mm is also applicable for rigid walls ≥100mm!