

Notes:

- installation instructions in [TDS](#)
- apply joint seal in opening, flush with wall/floor on 2 sides
- **other pipe dØ + s1** (thickness) are allowed within range and same pipe material
- EI for flexible walls ≥100mm is also applicable for **rigid walls** ≥100mm
- angle: perpendicular + all angles between 90° and 45°
- 'eccentric to zero' position in opening is allowed

principle detail

Firetect®

tested property

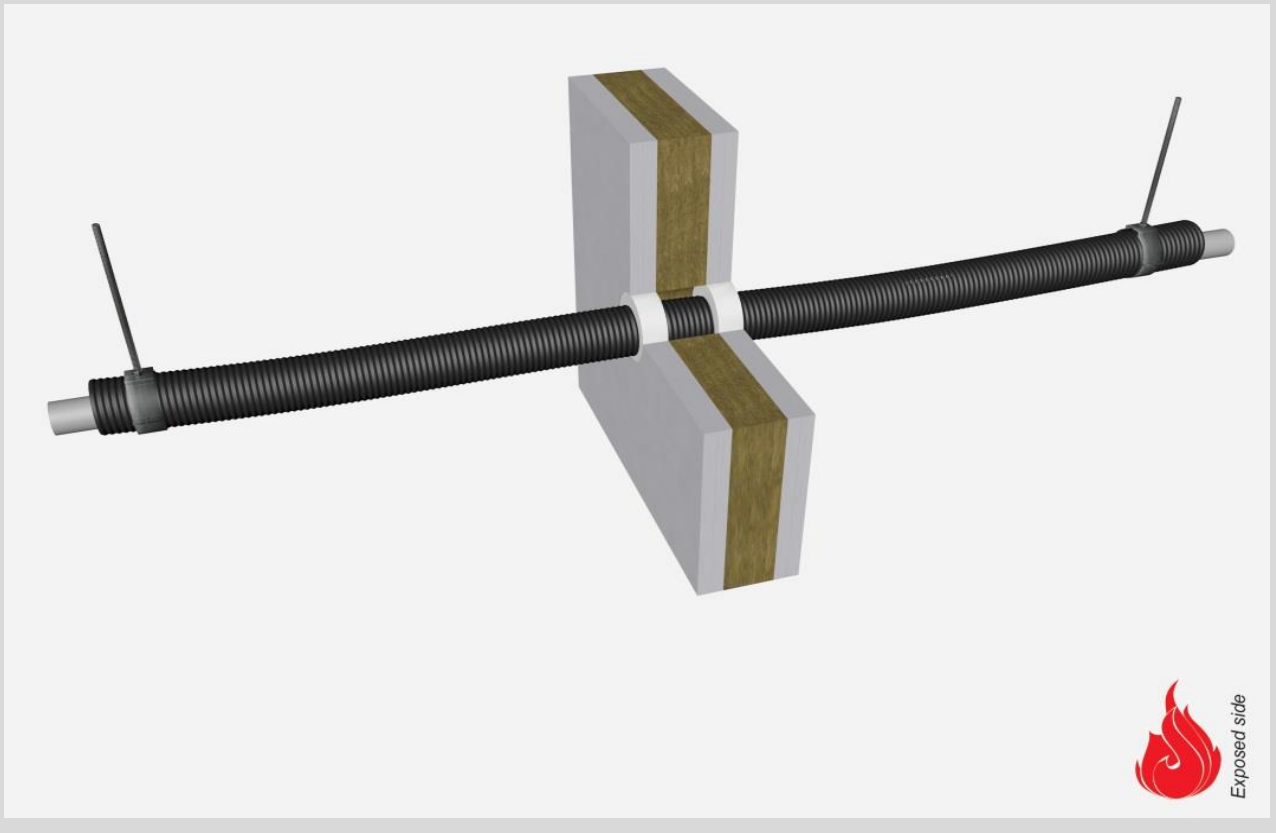
fire resistance

test method

EN 1366-3

service no.

15-40



PE-Xa pipes

Acrylic sealant

service type dØ (mm) s1 (mm)	pipe insulation	EI	constructive element ²⁾	Firetect joint seal		application 1 or 2 sides	backing required	max. opening in construction	pipe end configuration	max. angle
				width	depth					
up to Ø15/28 2,5	-	EI 90	flexible walls ≥ 100 mm	10 mm	25 mm	2 sides	-	48 mm	U/C + C/C	perpendicular + all angles between 90° and 45°
	-	EI 240	rigid walls ≥ 150 mm	15 mm	25 mm	2 sides	-	58 mm	U/C + C/C	
	-	EI 240	rigid floors ≥ 150 mm	15 mm	25 mm	2 sides	-	58 mm	U/C + C/C	
Ø16/25 2,2	-	EI 120	flexible walls ≥ 100 mm	10 mm	25 mm	2 sides	-	45 mm	U/C + C/C	
	-	EI 240	rigid walls ≥ 150 mm	15 mm	25 mm	2 sides	-	55 mm	U/C + C/C	
	-	EI 240	rigid floors ≥ 150 mm	15 mm	25 mm	2 sides	-	55 mm	U/C + C/C	
max. Ø32/54 4,4	-	EI 60	flexible walls ≥ 100 mm	10 mm	25 mm	2 sides	-	74 mm	U/C + C/C	
	-	EI 180	rigid walls ≥ 150 mm	15 mm	25 mm	2 sides	-	84 mm	U/C + C/C	
	-	EI 180	rigid floors ≥ 150 mm	15 mm	25 mm	2 sides	-	84 mm	U/C + C/C	

¹⁾ Penetration services must be supported; support distance ≤ 500mm (wall) or ≤ 400mm (floor).

²⁾ Constructive element must be classified acc. EN 13501-2 for the required fire resistance period. EI for flexible walls ≥100mm is also applicable for rigid walls ≥100mm!