

**Notes:**

- installation instructions in [TDS](#)
- apply joint seal in opening, flush with wall on 2 sides
- **other pipe dØ + s1** (thickness) are allowed within range and same pipe material
- EI for flexible walls ≥100mm is also applicable for **rigid walls** ≥100mm
- angle: perpendicular + all angles between 90° and 45°

**principle detail**



tested property

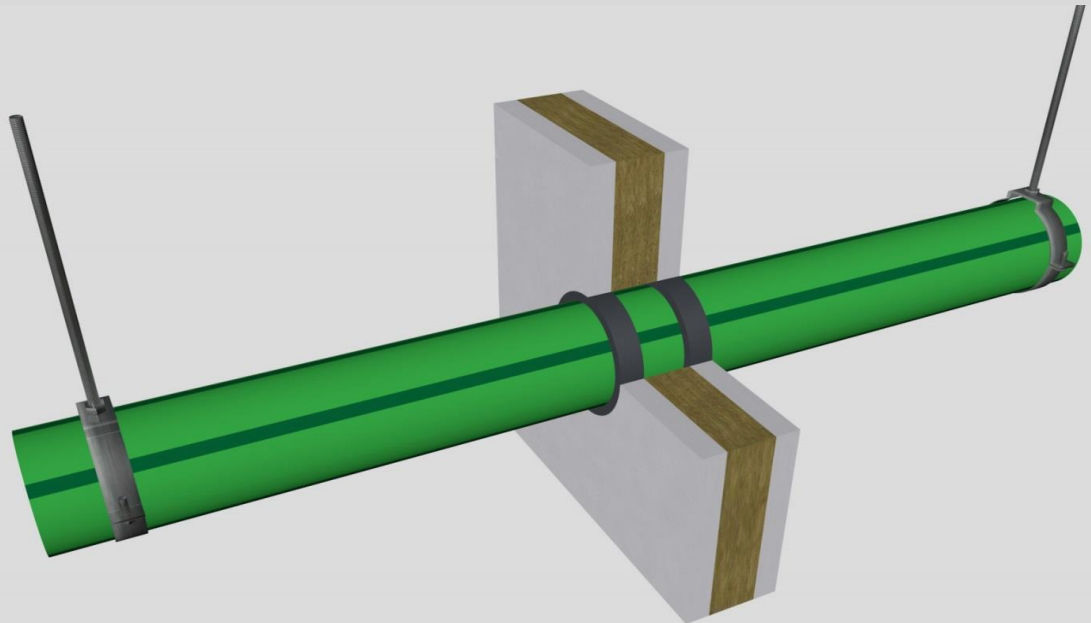
fire resistance

test method

EN 1366-3

service no.

15-28



**PP-R pipes**

**Graphite sealant**

service type dØ (mm)    s1 (mm)	EI	constructive element <sup>2)</sup>	Firetect joint seal		application 1 or 2 sides	backing required	max. opening in construction	pipe end configuration	max. angle
			width	depth					
Ø40  max. 5,5	EI 120	flexible walls ≥ 100 mm	10 mm	40 mm	2 sides	-	60 mm	U/C + C/C	perpendicular + all angles between 90° and 45°
	EI 240	rigid walls ≥ 150 mm	15 mm	40 mm	2 sides	-	70 mm	U/C + C/C	
	EI 120	flexible walls ≥ 100 mm	10 mm	40 mm	2 sides	-	60 mm	U/C + C/C	
	EI 240	rigid walls ≥ 150 mm	15 mm	40 mm	2 sides	-	70 mm	U/C + C/C	
Ø63  max. 8,6	EI 120	flexible walls ≥ 100 mm	10 mm	40 mm	2 sides	-	83 mm	U/C + C/C	
	EI 240	rigid walls ≥ 150 mm	15 mm	40 mm	2 sides	-	93 mm	U/C + C/C	
	EI 120	flexible walls ≥ 100 mm	10 mm	40 mm	2 sides	-	83 mm	U/C + C/C	
	EI 180	rigid walls ≥ 150 mm	15 mm	40 mm	2 sides	-	93 mm	U/C + C/C	
Ø75  max. 10,3	EI 120	flexible walls ≥ 100 mm	10 mm	40 mm	2 sides	-	95 mm	U/C + C/C	
	EI 240	rigid walls ≥ 150 mm	15 mm	40 mm	2 sides	-	105 mm	U/C + C/C	
	EI 120	flexible walls ≥ 100 mm	10 mm	40 mm	2 sides	-	95 mm	U/C + C/C	
	EI 180	rigid walls ≥ 150 mm	15 mm	40 mm	2 sides	-	105 mm	U/C + C/C	
<b>max.</b> Ø110  max. 15,1	EI 120	flexible walls ≥ 100 mm	10 mm	40 mm	2 sides	-	130 mm	U/C + C/C	
	EI 120	rigid walls ≥ 150 mm	10 mm	40 mm	2 sides	-	105 mm	U/C + C/C	
	EI 60	flexible walls ≥ 100 mm	10 mm	40 mm	2 sides	-	130 mm	U/C + C/C	
	EI 60	rigid walls ≥ 150 mm	10 mm	40 mm	2 sides	-	105 mm	U/C + C/C	

<sup>1)</sup> Penetration services must be supported; support distance ≤ 500mm.

<sup>2)</sup> Constructive element must be classified acc. EN 13501-2 for the required fire resistance period. EI for flexible walls ≥100mm is also applicable for rigid walls ≥100mm!