

Notes:

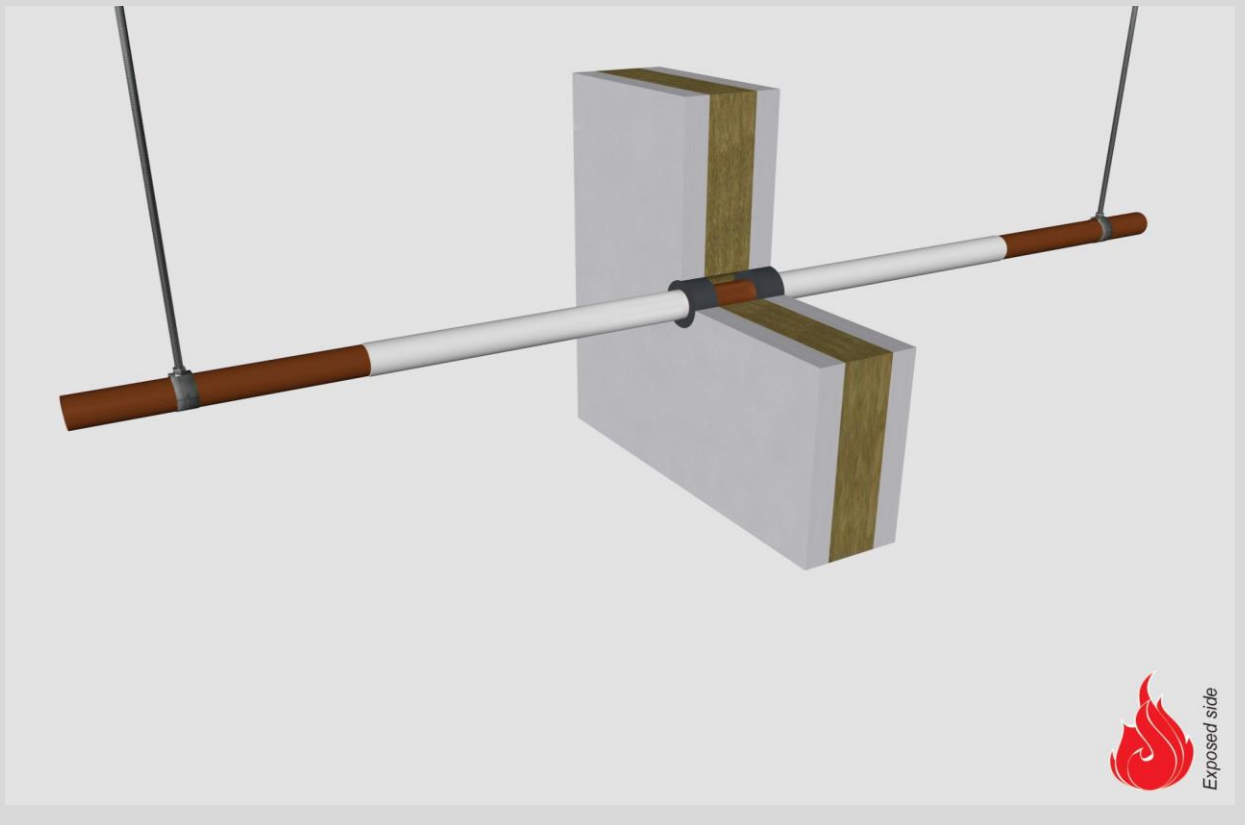
- installation instructions in [TDS](#)
- apply joint seal in opening, flush with wall/floor on 2 sides
- **other pipe dØ + s1** (thickness) are allowed within range and same pipe material
- EI for flexible walls ≥100mm is also applicable for **rigid walls** ≥100mm
- angle: perpendicular + all angles between 90° and 45°

principle detail

Firetect®

tested property
test method
service no.

fire resistance
EN 1366-3
0298



copper pipes

Graphite sealant

service type ¹⁾ dØ (mm) s1 (mm)	pipe insulation PA coating DFT 0,8mm	EI	constructive element ²⁾	Firetect joint seal		application 1 or 2 sides	backing required	max. opening in construction	pipe end configuration	max. angle
				width	depth					
Ø8 1,0	PA coating 200 LI	EI 90	flexible walls ≥ 100 mm	-	-	2 sides	-	8 mm	C/U + U/C + C/C	perpendicular + all angles between 90° and 45°
Ø12 1,0	PA coating 300 LI	EI 90	flexible walls ≥ 100 mm	10 mm	25 mm	2 sides	-	32 mm	C/U + U/C + C/C	
	PA coating 200 LI	EI 120	rigid walls ≥ 150 mm	10 mm	25 mm	2 sides	-	32 mm	C/U + U/C + C/C	
	PA coating 200 LI	EI 120	rigid floors ≥ 150 mm	10 mm	25 mm	2 sides	-	32 mm	C/U + U/C + C/C	
Ø15 1,0	-	EI 60	flexible walls ≥ 100 mm	10 mm	25 mm	2 sides	-	35 mm	C/U + U/C + C/C	
	PA coating 200 LI	EI 120	flexible walls ≥ 100 mm	10 mm	25 mm	2 sides	-	35 mm	C/U + U/C + C/C	
	PA coating 200 LI	EI 120	rigid walls ≥ 150 mm	14 mm	25 mm	2 sides	-	44 mm	C/U + U/C + C/C	
	PA coating 200 LI	EI 120	rigid floors ≥ 150 mm	14 mm	25 mm	2 sides	-	44 mm	C/U + U/C + C/C	
Ø22 1,1	PA coating 300 LI	EI 60	flexible walls ≥ 100 mm	10 mm	25 mm	2 sides	-	42 mm	C/U + U/C + C/C	
	PA coating 200 LI	EI 120	rigid walls ≥ 150 mm	10 mm	25 mm	2 sides	-	44 mm	C/U + U/C + C/C	
	PA coating 200 LI	EI 120	rigid floors ≥ 150 mm	10 mm	25 mm	2 sides	-	44 mm	C/U + U/C + C/C	
max.										
Ø28 1,2	PA coating 300 LI	EI 60	flexible walls ≥ 100 mm	10 mm	25 mm	2 sides	-	48 mm	C/U + U/C + C/C	
	PA coating 200 LI	EI 90	rigid walls ≥ 150 mm	10 mm	25 mm	2 sides	-	50 mm	C/U + U/C + C/C	
	PA coating 200 LI	EI 90	rigid floors ≥ 150 mm	10 mm	25 mm	2 sides	-	50 mm	C/U + U/C + C/C	

¹⁾ Penetration services must be supported; support distance ≤ 500mm (wall) or ≤ 400mm (floor).

²⁾ Constructive element must be classified acc. EN 13501-2 for the required fire resistance period. EI for flexible walls ≥100mm is also applicable for rigid walls ≥100mm!