

Notes:

- installation instructions in [TDS](#)
- apply joint seal in opening, flush with wall/floor on 2 sides
- **other pipe dØ + s1** (thickness) are allowed within range and same pipe material
- EI for flexible walls ≥100mm is also applicable for **rigid walls** ≥100mm
- angle: perpendicular + all angles between 90° and 45°

principle detail

tested property

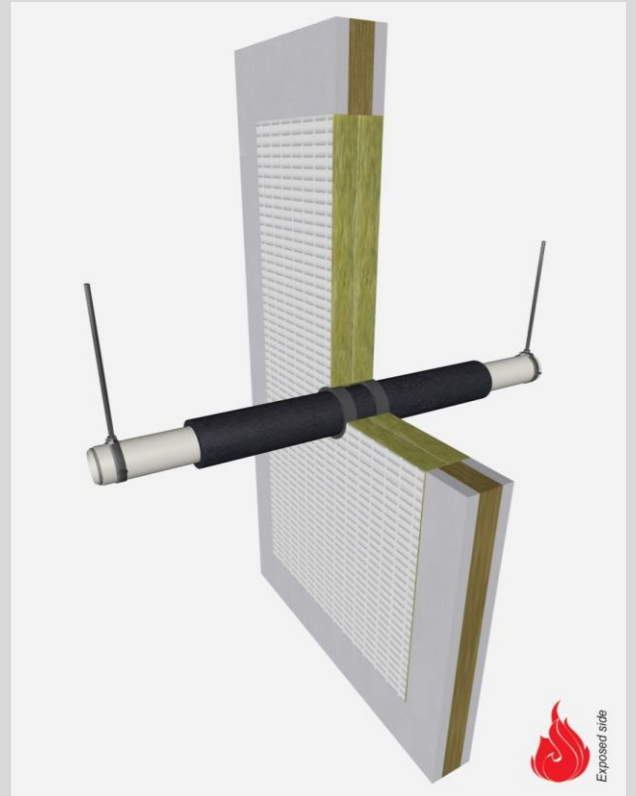
fire resistance

test method

EN 1366-3

service no.

0265



aluPE-X pipes

Graphite sealant

service type ¹⁾		pipe insulation min. 60 kg/m ³ eg Armaflex	EI	constructive element ²⁾	Firetect joint seal		application 1 or 2 sides	backing required	max. opening in construction	pipe end configuration	max. angle	
dØ (mm)	s1 (mm)				width	depth						
Ø16	2,0	-	EI 120	flexible walls ≥ 100 mm	10 mm	25 mm	2 sides	-	36 mm	U/C + C/C	perpendicular + all angles between 90° and 45°	
		synth. rubber 13mm	700 LS + LI + CS + CI	EI 60	flexible walls ≥ 100 mm	10 mm	25 mm	2 sides	-	71 mm		U/C + C/C
		13mm	700 LS + LI + CS + CI	EI 60	flexible walls ≥ 100 mm	10 mm	25 mm	2 sides	-	600x1200 mm + 25%		U/C + C/C
		13mm	700 LS + LI + CS + CI	EI 90	rigid walls ≥ 150 mm	10 mm	25 mm	2 sides	-	62 mm		U/C + C/C
		13mm	700 LS + LI + CS + CI	EI 90	rigid floors ≥ 150 mm	10 mm	25 mm	2 sides	-	62 mm		U/C + C/C
		13mm	700 LS + LI + CS + CI	EI 60	rigid floors ≥ 150 mm	10 mm	25 mm	2 sides	-	600 x 5000 mm		U/C + C/C
Ø25	2,5	-	EI 120	flexible walls ≥ 100 mm	5 mm	25 mm	2 sides	-	45 mm	U/C + C/C		
		synth. rubber 13mm	700 LS + LI + CS + CI	EI 60	flexible walls ≥ 100 mm	10 mm	25 mm	2 sides	-	71 mm		U/C + C/C
		13mm	700 LS + LI + CS + CI	EI 60	flexible walls ≥ 100 mm	10 mm	25 mm	2 sides	-	600x1200 mm + 25%		U/C + C/C
		13mm	700 LS + LI + CS + CI	EI 120	rigid walls ≥ 100 mm in FR mortar	10 mm	25 mm	2 sides	-	200x1000 mm		U/C + C/C
		13mm	700 LS + LI + CS + CI	EI 90	rigid walls ≥ 150 mm	10 mm	25 mm	2 sides	-	71 mm		U/C + C/C
		13mm	700 LS + LI + CS + CI	EI 90	rigid floors ≥ 150 mm	10 mm	25 mm	2 sides	-	71 mm		U/C + C/C
Ø63	6,0	synth. rubber 13mm	700 LS + LI + CS + CI	EI 60	flexible walls ≥ 100 mm	10 mm	25 mm	2 sides	-	600x1200 mm	U/C + C/C	
		13mm	700 LS + LI + CS + CI	EI 60	flexible walls ≥ 100 mm	10 mm	25 mm	2 sides	-	600x1200 mm	U/C + C/C	
		13mm	700 LS + LI + CS + CI	EI 120	rigid walls ≥ 100 mm in FR mortar	10 mm	25 mm	2 sides	-	200x1000 mm	U/C + C/C	
max.												
Ø75	7,5	synth. rubber 13mm	700 LS + LI + CS + CI	EI 60	flexible walls ≥ 100 mm	10 mm	25 mm	2 sides	-	600x1200 mm	U/C + C/C	
		13mm	700 LS + LI + CS + CI	EI 60	flexible walls ≥ 100 mm	10 mm	25 mm	2 sides	-	600x1200 mm	U/C + C/C	
		13mm	700 LS + LI + CS + CI	EI 120	rigid walls ≥ 100 mm in FR mortar	10 mm	25 mm	2 sides	-	200x1000 mm	U/C + C/C	

in PA board 2S 50 mm

¹⁾ Penetration services must be supported; support distance ≤ 500mm (wall) or ≤ 400mm (floor).

²⁾ Constructive element must be classified acc. EN 13501-2 for the required fire resistance period. EI for flexible walls ≥100mm is also applicable for rigid walls ≥100mm!