

**Notes:**

- installation instructions in [TDS](#)
- apply joint seal in opening, flush with wall/floor on 2 sides
- **other pipe dØ + s1** (thickness) are allowed within range and same pipe material
- EI for flexible walls ≥100mm is also applicable for **rigid walls** ≥100mm
- angle: perpendicular + all angles between 90° and 45° (default for range) or 15° and 30° (individually tested)

**principle detail**

**Firetect®**

tested property

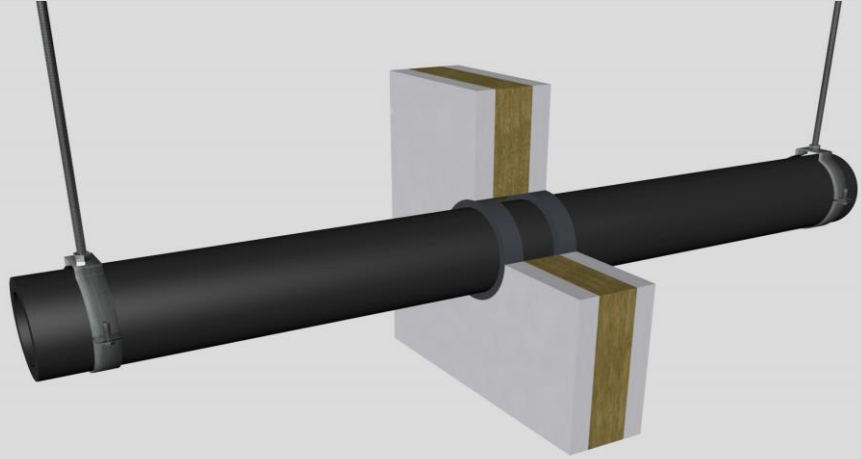
fire resistance

test method

EN 1366-3

service no.

0229



**PE + PP + PVC pipes**

dØ (mm)	service type <sup>1)</sup>		pipe insulation min. 60 kg/m <sup>3</sup> eg Armaflex	EI	constructive element <sup>2)</sup>	Firetect joint seal		application 1 or 2 sides	backing required	max. opening in construction	pipe end configuration	max. angle		
	s1 (mm)	non-standard config.				width	depth							
<b>max.</b>														
Ø110	PE	3,4 up to 10,0	-	EI 90	flexible walls ≥ 100 mm	10 mm	25 mm	2 sides	-	130 mm	U/C + C/C	perpendicular + all angles between 90° and 45°		
	PVC	2,7 up to 10,0	-											
	PP	2,7 up to 6,3	-											
	PE	3,4 up to 10,0	-	EI 90	rigid floors ≥ 150 mm	15 mm	25 mm	2 sides	-	140 mm	U/C + C/C	perpendicular + all angles between 90° and 45°		
	PVC	2,7 up to 10,0	-											
	PP	2,7 up to 6,3	-											
Ø90	PE	3,5 up to 8,2	-	EI 120	rigid walls ≥ 100 mm in FR mortar	10 mm	25 mm	2 sides	-	200 x 1000 mm	U/C + C/C	perpendicular + all angles between 90° and 45°		
	PVC	3,0 up to 8,2	-											
	PP	3,0 up to 8,2	-											
<b>Individual test results</b>														
Ø110	PVC	3,2	max. 15° angle <sup>3)</sup>	-	EI 90	flexible walls ≥ 100 mm	10 mm	25 mm	2 sides	-	130 mm	U/C + C/C	default: perpendicular + all angles between 90° and 45° or tested with max. 15°/30° angle	
	PE	1,0	PE bundle Ø16	-	EI 120	flexible walls ≥ 100 mm	10 mm	25 mm	2 sides	*	130 mm	-		
	PE	4,2	-	-	EI 120	flexible walls ≥ 100 mm	50 mm	25 mm	2 sides	-	210 mm	U/C + C/C		
	PE	4,2	-	synth. rubber 13mm	700 LS + LI + CS + CI	EI 60	flexible walls ≥ 100 mm	10 mm	25 mm	2 sides	-	156 mm		U/C + C/C
	PE	4,2	max. 30° angle <sup>4)</sup>	-	EI 90	rigid walls ≥ 100 mm	10 mm	25 mm	2 sides	-	130 mm	U/C + C/C		
Ø125	PE	max. 11,4	-	-	EI 60	flexible walls ≥ 100 mm	10 mm	25 mm	2 sides	-	145 mm	U/C + C/C		

Graphite sealant

\* smoke seal Acrylic between pipes on 2 sides

<sup>1)</sup> Penetration services must be supported; support distance ≤ 500mm (wall) or ≤ 400mm (floor).

<sup>2)</sup> Constructive element must be classified acc. EN 13501-2 for the required fire resistance period. EI for flexible walls ≥100mm is also applicable for rigid walls ≥100mm!

<sup>3)</sup> Max. angle: perpendicular + all angles between 90° and 45° + 0° to max. 15°

<sup>4)</sup> Max. angle: perpendicular + all angles between 90° and 45° + 0° to max. 30°