

Notes:

- installation instructions in [TDS](#)
- apply joint seal in opening, flush with wall/floor on 2 sides
- **other pipe dØ + s1** (thickness) are allowed within range and same pipe material
- EI for flexible walls ≥100mm is also applicable for **rigid walls** ≥100mm
- angle: perpendicular + all angles between 90° and 45°

principle detail

Firetect®

tested property

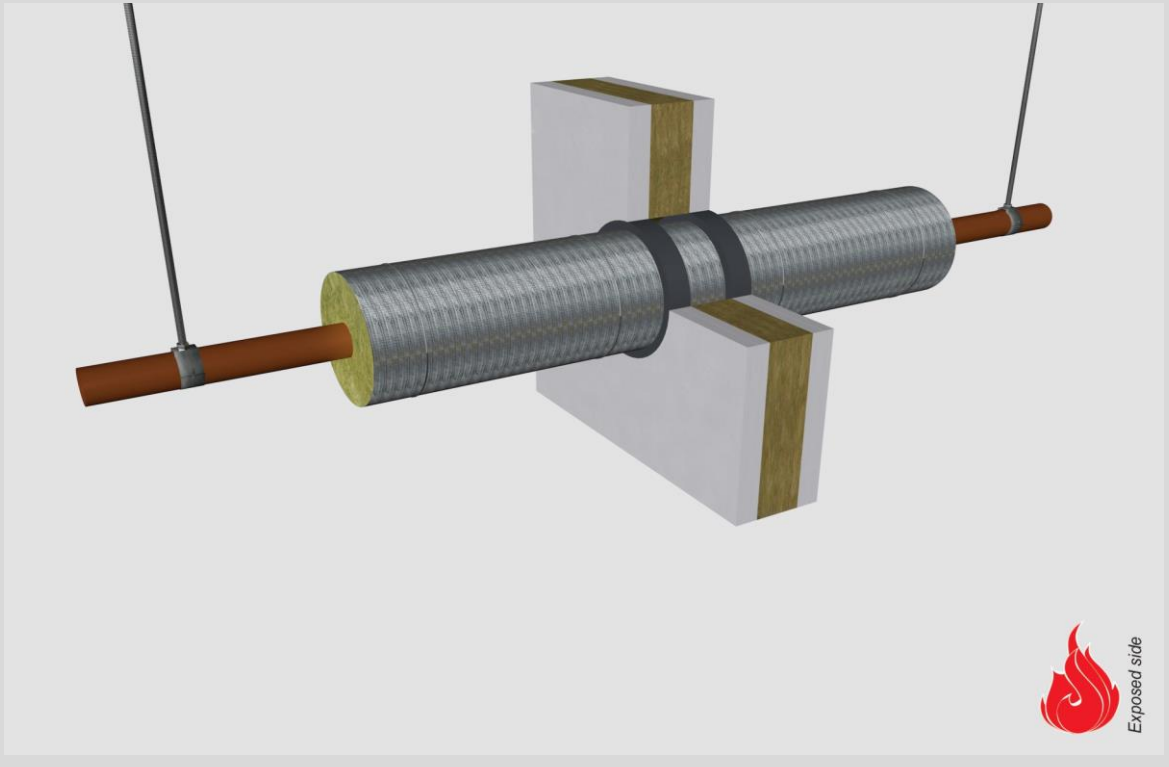
fire resistance

test method

EN 1366-3

service no.

0225



copper pipes

Graphite sealant¹

service type ¹⁾		pipe insulation min. 60 kg/m ³ eg Armaflex	EI	constructive element ²⁾	Firetect joint seal		application 1 or 2 sides	backing required	max. opening in construction	pipe end configuration	max. angle	
dØ (mm)	s1 (mm)				width	depth						
Ø15	1,0	synth. rubber 13mm	700 LS + LI + CS + CI	EI 120	flexible walls ≥ 100 mm	10 mm	25 mm	2 sides	-	61 mm	C/U + U/C + C/C	perpendicular + all angles between 90° and 45°
		25mm	700 LS + LI + CS + CI	EI 90	flexible walls ≥ 100 mm	10 mm	25 mm	2 sides	-	85 mm	C/U + U/C + C/C	
		rock wool 25 mm	700 LS + LI + CS + CI	EI 90	flexible walls ≥ 100 mm	10 mm	25 mm	2 sides	-	85 mm	C/U + U/C + C/C	
		50 mm	700 LS + LI + CS + CI	EI 120	flexible walls ≥ 100 mm	6 mm	25 mm	2 sides	-	128 mm	C/U + U/C + C/C	
Ø22	1,1	synth. rubber 13mm	700 LS + LI + CS + CI	EI 60	flexible walls ≥ 100 mm	10 mm	25 mm	2 sides	-	600 x 1500 mm	C/U + U/C + C/C	perpendicular + all angles between 90° and 45°
		13mm	700 LS + LI + CS + CI	EI 90	rigid floors ≥ 150 mm	10 mm	25 mm	2 sides	-	68 mm	C/U + U/C + C/C	
		13mm	700 LS + LI + CS + CI	EI 60	rigid floors ≥ 150 mm	10 mm	25 mm	2 sides	-	600 x 5000 mm	C/U + U/C + C/C	
max.												
Ø35	1,5	synth. rubber 13mm	700 LS + LI + CS + CI	EI 90	flexible walls ≥ 100 mm	10 mm	25 mm	2 sides	-	81 mm	C/U + U/C + C/C	perpendicular + all angles between 90° and 45°
		25mm	700 LS + LI + CS + CI	EI 90	flexible walls ≥ 100 mm	6 mm	25 mm	2 sides	-	98 mm	C/U + U/C + C/C	
		rock wool 25 mm	700 LS + LI + CS + CI	EI 60	flexible walls ≥ 100 mm	10 mm	25 mm	2 sides	-	105 mm	C/U + U/C + C/C	
		50 mm	700 LS + LI + CS + CI	EI 90	flexible walls ≥ 100 mm	10 mm	25 mm	2 sides	-	155 mm	C/U + U/C + C/C	

in PA board 2S 50 mm

¹⁾ Penetration services must be supported; support distance ≤ 500mm (wall) or ≤ 400mm (floor).

²⁾ Constructive element must be classified acc. EN 13501-2 for the required fire resistance period. EI for flexible walls ≥100mm is also applicable for rigid walls ≥100mm!