

Notes:

- installation instructions in [TDS](#)
- apply joint seal in opening, flush with wall/floor on 2 sides
- **other pipe dØ + s1** (thickness) are allowed within range and same pipe material
- EI for flexible walls ≥100mm is also applicable for **rigid walls** ≥100mm
- angle: perpendicular + all angles between 90° and 45°

principle detail

Firetect®

tested property

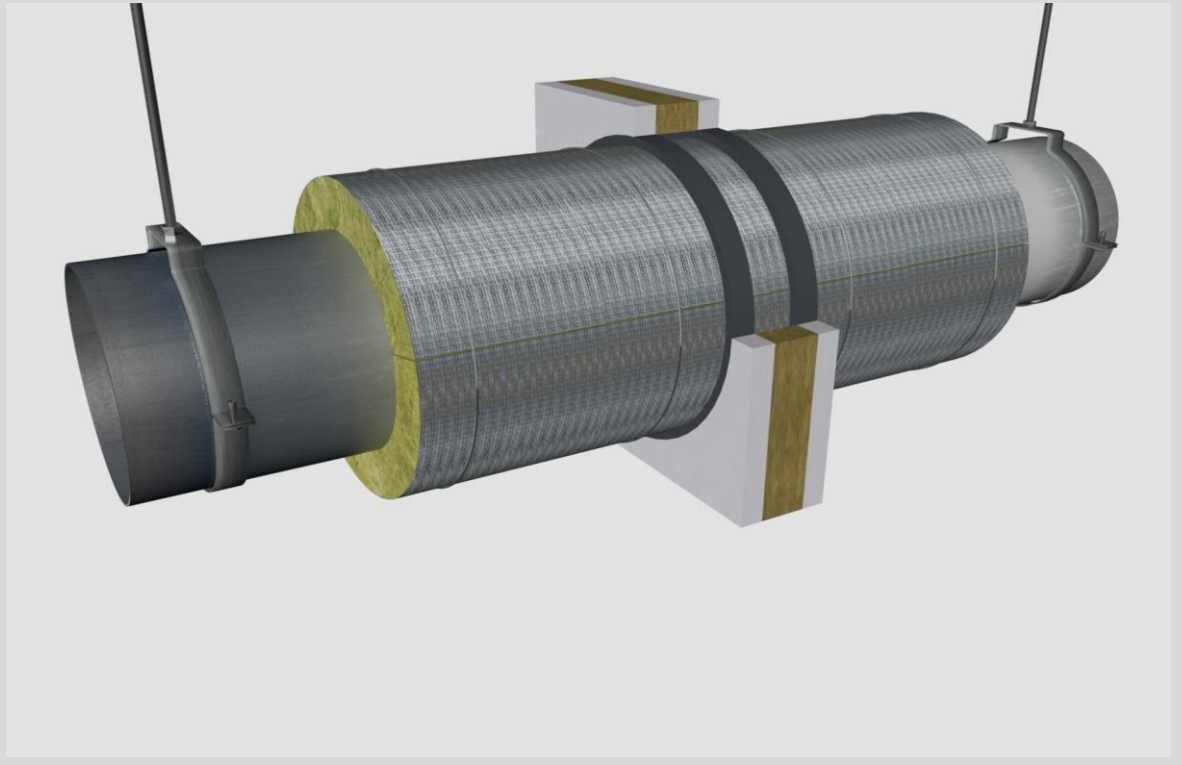
fire resistance

test method

EN 1366-3

service no.

0202



steel pipes

Graphite sealant

service type ¹⁾ dØ (mm) s1 (mm)	pipe insulation min. 90 kg/m ³ eg Rockwool 810	EI	constructive element ²⁾	Firetect joint seal		application 1 or 2 sides	backing required	max. opening in construction	pipe end configuration	max. angle	
				width	depth						
Ø15 1,0	stone wool 25 mm	700 LS + LI + CS + CI	EI 90	flexible walls ≥ 100 mm	10 mm	25 mm	2 sides	-	85 mm	C/U + U/C + C/C	perpendicular + all angles between 90° and 45°
	50 mm	700 LS + LI + CS + CI	EI 120	flexible walls ≥ 100 mm	6 mm	25 mm	2 sides	-	128 mm	C/U + U/C + C/C	
Ø35 1,5	stone wool 25 mm	700 LS + LI + CS + CI	EI 60	flexible walls ≥ 100 mm	10 mm	25 mm	2 sides	-	105 mm	C/U + U/C + C/C	
	50 mm	700 LS + LI + CS + CI	EI 90	flexible walls ≥ 100 mm	10 mm	25 mm	2 sides	-	155 mm	C/U + U/C + C/C	
Ø42,2 3,25	stone wool 25 mm	700 LS + LI + CS + CI	EI 60	flexible walls ≥ 100 mm	10 mm	25 mm	2 sides	-	112 mm	C/U + U/C + C/C	
	50 mm	700 LS + LI + CS + CI	EI 90	flexible walls ≥ 100 mm	10 mm	25 mm	2 sides	-	162 mm	C/U + U/C + C/C	
	PIR 25 mm	1000 LS + LI + CS + CI	EI 120	flexible walls ≥ 100 mm	10 mm	25 mm	2 sides	-	112 mm	C/U + U/C + C/C	
	25 mm	1000 LS + LI + CS + CI	EI 240	rigid walls ≥ 150 mm	15 mm	25 mm	2 sides	-	122 mm	C/U + U/C + C/C	
	25 mm	1000 LS + LI + CS + CI	EI 240	rigid floors ≥ 150 mm	15 mm	25 mm	2 sides	-	122 mm	C/U + U/C + C/C	
	50 mm	1000 LS + LI + CS + CI	EI 120	flexible walls ≥ 100 mm	10 mm	25 mm	2 sides	-	162 mm	C/U + U/C + C/C	
max.	50 mm	1000 LS + LI + CS + CI	EI 240	rigid walls ≥ 150 mm	15 mm	25 mm	2 sides	-	172 mm	C/U + U/C + C/C	
	50 mm	1000 LS + LI + CS + CI	EI 240	rigid floors ≥ 150 mm	15 mm	25 mm	2 sides	-	172 mm	C/U + U/C + C/C	
	Ø219,1 4,5	stone wool 25 mm	700 LS + LI + CS + CI	EI 90	flexible walls ≥ 100 mm	10 mm	25 mm	2 sides	-	289 mm	C/U + U/C + C/C
	25 mm	1000 LS + LI + CS + CI	EI 120	rigid floors ≥ 150 mm	15 mm	25 mm	2 sides	-	300 mm	C/U + U/C + C/C	
	50 mm	700 LS + LI + CS + CI	EI 90	flexible walls ≥ 100 mm	10 mm	25 mm	2 sides	-	339 mm	C/U + U/C + C/C	
	PIR 25 mm	1000 LS + LI + CS + CI	EI 60	flexible walls ≥ 100 mm	10 mm	25 mm	2 sides	-	289 mm	C/U + U/C + C/C	
25 mm	1000 LS + LI + CS + CI	EI 180	rigid floors ≥ 150 mm	15 mm	25 mm	2 sides	-	299 mm	C/U + U/C + C/C		
50 mm	1000 LS + LI + CS + CI	EI 60	flexible walls ≥ 100 mm	10 mm	25 mm	2 sides	-	339 mm	C/U + U/C + C/C		
50 mm	1000 LS + LI + CS + CI	EI 90	rigid floors ≥ 150 mm	15 mm	25 mm	2 sides	-	349 mm	C/U + U/C + C/C		

¹⁾ Penetration services must be supported; support distance ≤ 500mm (wall) or ≤ 400mm (floor).

²⁾ Constructive element must be classified acc. EN 13501-2 for the required fire resistance period. EI for flexible walls ≥100mm is also applicable for rigid walls ≥100mm!