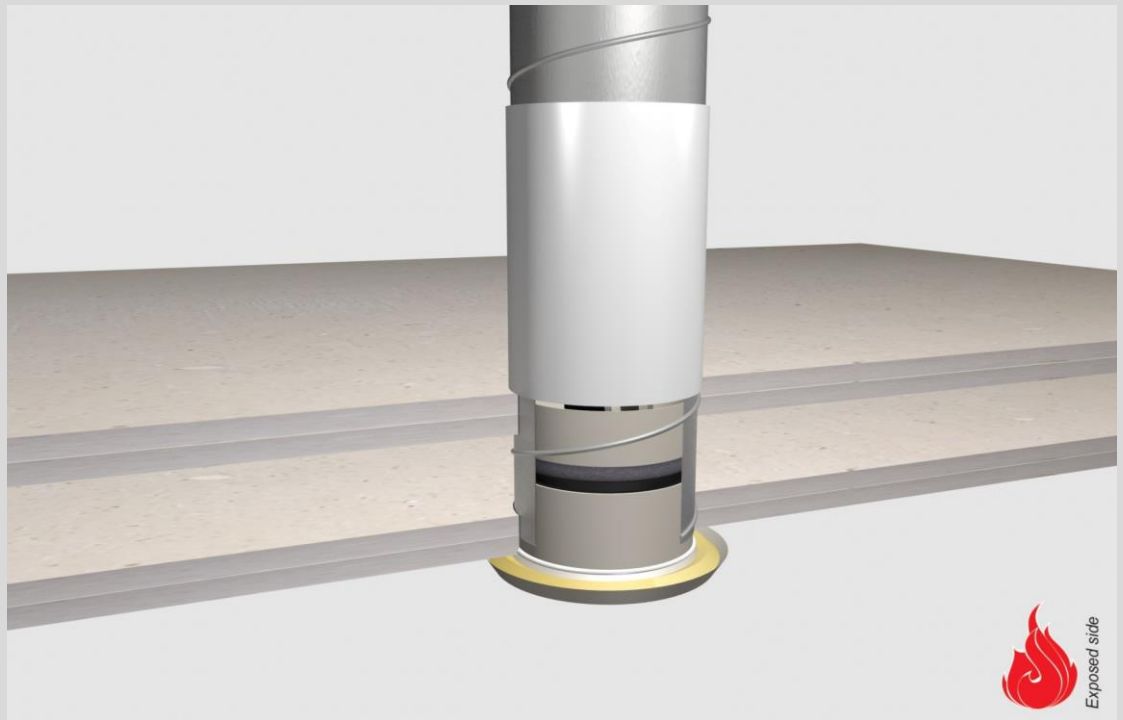


**Notes:**

- installation instructions in [TDS](#)
- spiral pipe tested with fire damper, with and without valve
- EI for flexible walls  $\geq 100\text{mm}$  is also applicable for **rigid walls**  $\geq 100\text{mm}$

tested property	fire resistance
test method	EN 1366-3
service no.	0172
tested property	smoke resistance
test method	EN 1634-3



**fire dampers**

fire damper specs <sup>1)</sup>	EI	constructive element <sup>2)</sup>	PA board	PA coating	application	max. opening in construction	finish required
			Firetect fire board type 2S 50 mm	Firetect coat seal DFT 0,8mm			
<b>rectangular shape</b>							
max. 600 x 300 mm service: steel damper, supported to floor upgrade acc. EN 1366-2	EI 60	flexible walls $\geq 100\text{ mm}$	cladding: 1 layer opening: 2 strips	-	1 or 2 sides 1 side	900 x 596 mm	seal adjacent joints with Firetect Acrylic
max. 600 x 300 mm service: steel damper, supported to floor installation acc. EN 1366-3	EI 90	flexible walls $\geq 100\text{ mm}$	opening: 2 strips	-	1 side	900 x 596 mm	seal adjacent joints with Firetect Acrylic
<b>circular shape, with or without valve</b>							
max. $\varnothing$ 125 mm service: spiral pipe installation acc. EN 1366-3	EI 120	flexible walls $\geq 100\text{ mm}$	-	200 LI	2 sides	130 mm	apply joint bead Firetect Acrylic
max. $\varnothing$ 125 mm service: spiral pipe installation acc. EN 1366-3	EI 120	flexible ceilings $\geq 150\text{ mm}$	-	200 LI	1 side	130 mm	apply joint bead Firetect Acrylic
max. $\varnothing$ 125 mm service: spiral pipe installation acc. EN 1366-3	EI 120	rigid floors $\geq 150\text{ mm}$	-	200 LI	1 side	130 mm	apply joint bead Firetect Acrylic

in PA board 2S 50 mm

<sup>1)</sup> Penetration services must be supported; always install services acc. manufacturer's instructions.

<sup>2)</sup> Constructive element must be classified acc. EN 13501-2 for the required fire resistance period. EI for flexible walls  $\geq 100\text{mm}$  is also applicable for rigid walls  $\geq 100\text{mm}$ !