

Standard configuration for cable penetration systems with EN 1366-3 / metal stud wall 100 mm, opening 600x1200 mm with 2x Firetect® PA board 2S 50 mm

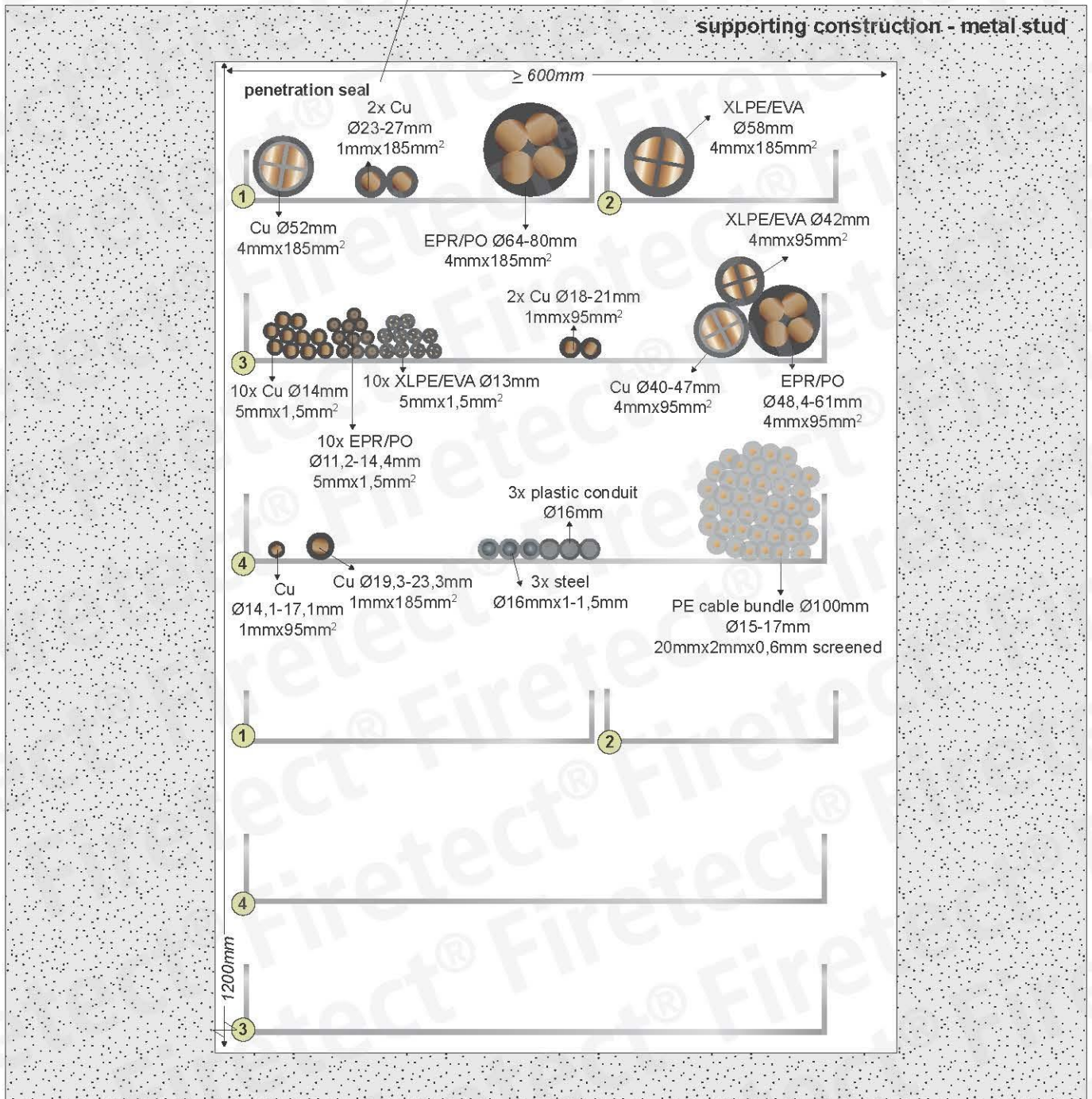
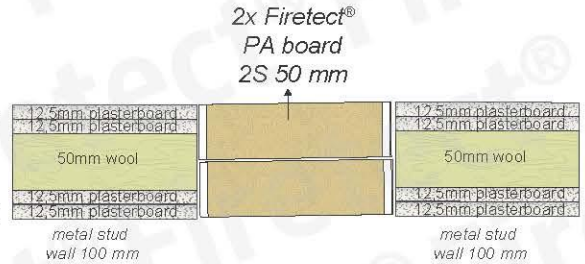
El 60 minutes

cables not coated back

Key

- ① Steel ladders 300 mm, thickness = 1,25 mm
 - ② Steel ladders 200 mm, thickness = 1,00 mm
 - ③ Perforated steel tray 500 mm, thickness = 1,50 mm
 - ④ Non-perforated steel tray 500 mm, thickness = 1,50 mm
- penetrations are supported at 250 + 500 mm

penetration seal
double batt 2x Firetect®
PA board 2S 50 mm
support construction
100 mm metal stud wall



between the cables
Firetect® Acrylic sealant or Firetect® PA sealer

gaps, joints between services and mineral wool (appr.5mm)
filled with Firetect® Acrylic sealant or Firetect® PA sealer

"butter" cross cut edges of PA board & aperture
Firetect® PA coating or Firetect® Acrylic sealant or Firetect® PA sealer