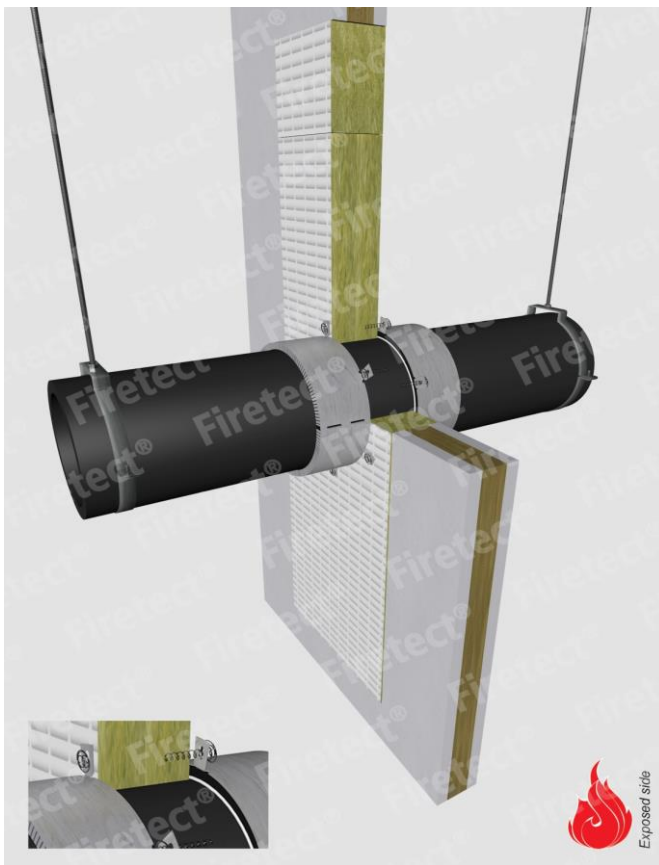


tested property
test method
service no.

fire resistance
EN 1366-3
7-14



PE + PP + PVC pipes

service type ¹⁾		non-standard config.	🔥 EI	constructive element ²⁾	FMU collar Firetect pipe collar Ø in mm	application	finish required	max. opening in construction	pipe end configuration	max. angle
dØ (mm)	s1 (mm)					1 or 2 sides				
up to										
Ø110	PE 3,4 up to 10,0 PVC 2,7 up to 10,0 PP 2,7 up to 6,3		EI 60	flexible walls ≥ 100 mm	Ø110	2 sides	*	110 mm	U/C + C/C + C/C	perpendicular + all angles between 90° and 45°
Ø110	PE 3,4 up to 10,0 PVC 2,7 up to 10,0 PP 2,7 up to 6,3	screwed on or cast-in with Firetect® PA spirals	EI 60	flexible walls ≥ 100 mm	Ø110	2 sides 2 sides 2 sides	* * *	600x1500 mm 600 x 1200 mm 264 x 264 mm	U/C + C/C + C/C U/C + C/C + C/C U/C + C/C + C/C	perpendicular + all angles between 90° and 45°
Ø125	PE 3,9 up to 11,7 PVC 3,1 up to 11,7 PP 3,1 up to 7,1		EI 60	flexible walls ≥ 100 mm	Ø110	2 sides	*	127 mm	U/C + C/C + C/C	perpendicular + all angles between 90° and 45°
Ø140	PE 4,9 up to 14,6 PVC 4,0 up to 14,6 PP 4,0 up to 14,6		EI 60	flexible walls ≥ 100 mm	Ø140	2 sides	*	140 mm	U/C + C/C + C/C	perpendicular + all angles between 90° and 45°
Ø160	PE 4,9 up to 14,6 PVC 4,0 up to 14,6 PP 4,0 up to 14,6		EI 60	flexible walls ≥ 100 mm	Ø160	2 sides	*	160 mm	U/C + C/C + C/C	perpendicular + all angles between 90° and 45°
Ø200	PE 6,2 up to 18,2 PVC 4,9 up to 18,2 PP 4,9 up to 18,2		EI 60	flexible walls ≥ 100 mm	Ø200	2 sides	*	200 mm	U/C + C/C + C/C	perpendicular + all angles between 90° and 45°
max.										
Ø250	PE 9,6 up to 22,7 PVC 6,2 up to 22,7 PP 6,2 up to 22,7	screwed on with Firetect® PA spirals	EI 60	flexible walls ≥ 100 mm	Ø250	2 sides	*	400 x 1375 mm	U/C + C/C + C/C	perpendicular + all angles between 90° and 45°
individual test results										
Ø110	PE 3,4 PP 2,7		EI 120 EI 120	flexible walls ≥ 100 mm flexible walls ≥ 100 mm	Ø110 Ø110	2 sides 2 sides	* *	110 mm 110 mm	U/U + C/U + U/C + C/C + C/C U/U + C/U + U/C + C/C + C/C	default: perpendicular + all angles between 90° and 45°
	PE 4,2 PE 4,2	max. 15° angle ³⁾ 3x bundled	EI 120 EI 90	rigid walls ≥ 100 mm rigid walls ≥ 100 mm	Ø125 Flex collar	2 sides 2 sides	* *	115 mm 330 x 330 mm	U/C + C/C + C/C U/C + C/C	
Ø125	uPVC 3,7 PP 3,1	with pipe socket screwed on PA board box	EI 90 EI 90	flexible walls ≥ 100 mm flexible walls ≥ 100 mm	Ø125 Ø125	2 sides 2 sides	* *	125 mm 125 mm	U/C + C/C U/C + C/C	perpendicular + all angles between 90° and 45°
Ø200	PVC 6,0	cast-in	EI 60	rigid walls ≥ 150 mm	Ø200	2 sides	*	255 mm	U/C + C/C	perpendicular + all angles between 90° and 45°
Ø400	PVC 12,5	XL size	EI 90	rigid walls ≥ 150 mm	up to Ø400	2 sides	*	405 mm	C/C	perpendicular + all angles between 90° and 45°

in PA board 2S 50 mm

* smoke seal Acrylic on 2 sides

¹⁾ Penetration services must be supported; support distance ≤ 500mm.

²⁾ Constructive element must be classified acc. EN 13501-2 for the required fire resistance period. EI for flexible walls ≥ 100mm is also applicable for rigid walls ≥ 100mm!

³⁾ Max. angle: perpendicular + all angles between 90° and 45° + 0° to max. 15°