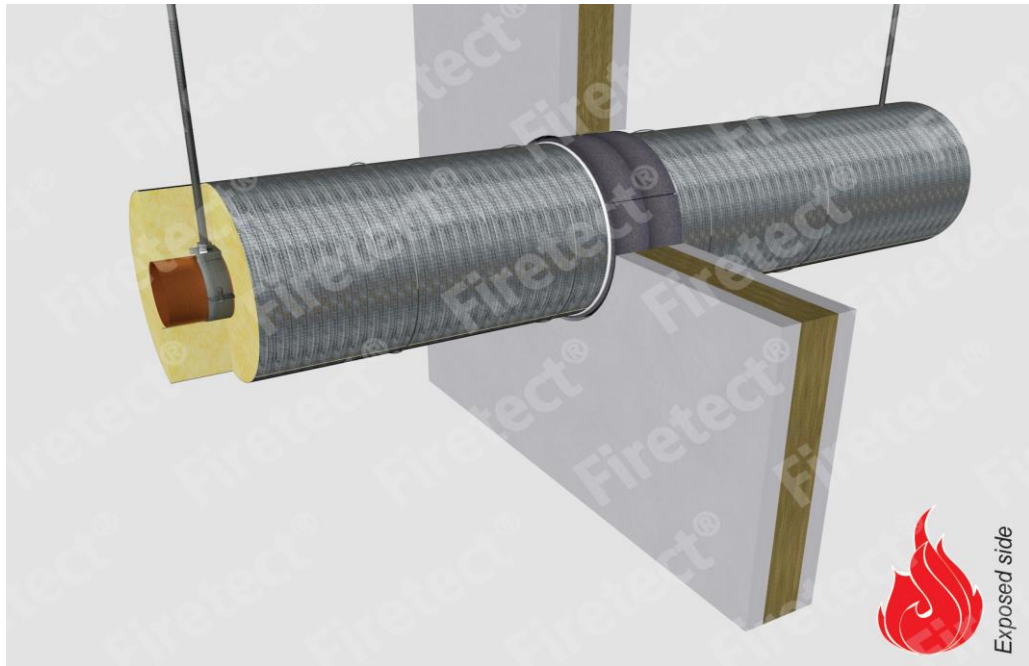


tested property fire resistance
 test method EN 1366-3
 service no. **21-8**



copper pipes

service type ¹⁾ pipe insulation ²⁾ EI ³⁾ constructive element ³⁾ **Firetect pipe wrap** application finish max. opening pipe end max. angle
 dØ (mm) s1 (mm) min. 75 kg/m³ eg Climpipe, Rockwool or U Protect Pipe Section Alu2

Wrap

Ø8	1,0	PA coating	200 LI	EI 90	flexible walls ≥ 100 mm	-	-	2 sides	-	8 mm	C/U + U/C + CC	default
Ø15	1,0	glass / rock wool 20mm	1200 CS + CI	EI 120	flexible walls ≥ 100 mm	π x Ø x	1	2 sides	*	59 mm	C/U + U/C + CC	perpendicular + all angles between 90° and 45°
			20mm 1200 CS + CI	EI 240	rigid walls ≥ 150 mm	π x Ø x	2	2 sides	*	63 mm	U/C + CC	
			22mm 1200 CS + CI	EI 180	rigid walls ≥ 150 mm	π x Ø x	1	2 sides	*	63 mm	C/U + U/C + CC	
			30mm 1200 CS + CI	EI 120	flexible walls ≥ 100 mm	π x Ø x	1	2 sides	*	79 mm	C/U + U/C + CC	
			30mm 1200 CS + CI	EI 240	rigid walls ≥ 150 mm	π x Ø x	2	2 sides	*	83 mm	U/C + CC	
			40mm 1200 CS + CI	EI 120	flexible walls ≥ 100 mm	π x Ø x	1	2 sides	*	99 mm	C/U + U/C + CC	
			40mm 1200 CS + CI	EI 240	rigid walls ≥ 150 mm	π x Ø x	2	2 sides	*	103 mm	U/C + CC	
			50mm 1200 CS + CI	EI 120	flexible walls ≥ 100 mm	π x Ø x	2	2 sides	*	123 mm	C/U + U/C + CC	
			50mm 1200 CS + CI	EI 240	rigid walls ≥ 150 mm	π x Ø x	2	2 sides	*	123 mm	U/C + CC	
			60mm 1200 CS + CI	EI 120	rigid walls ≥ 150 mm	TT x Ø x	3	2 sides	*	147 mm	U/C + C/C	
80mm 1200 CS + CI	EI 120	rigid walls ≥ 150 mm	TT x Ø x	3	2 sides	*	202 mm	U/C + C/C				
Ø22	1,1	glass / rock wool 22mm	1200 CS + CI	EI 180	rigid walls ≥ 150 mm	π x Ø x	1	2 sides	*	86 mm	C/U + U/C + CC	perpendicular + all angles between 90°
			30mm 1200 CS + CI	EI 180	rigid walls ≥ 150 mm	π x Ø x	1	2 sides	*	86 mm	C/U + U/C + CC	
Ø35	1,5	glass / rock wool 22mm	1200 CS + CI	EI 180	rigid walls ≥ 150 mm	π x Ø x	1	2 sides	*	99 mm	C/U + U/C + CC	perpendicular + all angles between 90°
			30mm 1200 CS + CI	EI 180	rigid walls ≥ 150 mm	π x Ø x	1	2 sides	*	99 mm	C/U + U/C + CC	
max.												
Ø76	2,1	glass / rock wool 20mm	1200 CS + CI	EI 90	flexible walls ≥ 100 mm	π x Ø x	2	2 sides	*	124 mm	C/U + U/C + CC	perpendicular + all angles between 90° and 45°
			20mm 1200 CS + CI	EI 240	rigid walls ≥ 150 mm	π x Ø x	2	2 sides	*	132 mm	U/C + CC	
			30mm 1200 CS + CI	EI 90	flexible walls ≥ 100 mm	π x Ø x	2	2 sides	*	144 mm	C/U + U/C + CC	
			30mm 1200 CS + CI	EI 120	rigid walls ≥ 150 mm	TT x Ø x	2	2 sides	*	144 mm	U/C + C/C	
			40mm 1200 CS + CI	EI 90	flexible walls ≥ 100 mm	π x Ø x	1	2 sides	*	160 mm	C/U + U/C + CC	
			40mm 1200 CS + CI	EI 120	rigid walls ≥ 150 mm	TT x Ø x	2	2 sides	*	164 mm	U/C + C/C	
			50mm 1200 CS + CI	EI 90	flexible walls ≥ 100 mm	π x Ø x	2	2 sides	*	184 mm	C/U + U/C + CC	
			50mm 1200 CS + CI	EI 120	rigid walls ≥ 150 mm	TT x Ø x	2	2 sides	*	202 mm	U/C + C/C	
			60mm 1200 CS + CI	EI 90	flexible walls ≥ 100 mm	π x Ø x	3	2 sides	*	208 mm	C/U + U/C + CC	
			60mm 1200 CS + CI	EI 120	rigid walls ≥ 150 mm	TT x Ø x	3	2 sides	*	208 mm	U/C + C/C	
80mm 1200 CS + CI	EI 90	flexible walls ≥ 100 mm	π x Ø x	3	2 sides	*	248 mm	C/U + U/C + CC				
80mm 1200 CS + CI	EI 120	rigid walls ≥ 150 mm	TT x Ø x	3	2 sides	*	248 mm	U/C + C/C				

* smoke seal Acrylic on 2 sides

¹⁾ Penetration services must be supported; support distance ≤ 500mm.

²⁾ Pipe insulation must be fastened individually (not wrapped!) with steel wire: at max. 50mm + 300mm from constructive element.

³⁾ Constructive element must be classified acc. EN 13501-2 for the required fire resistance period. EI for flexible walls ≥ 100mm is also applicable for rigid walls ≥ 100mm!