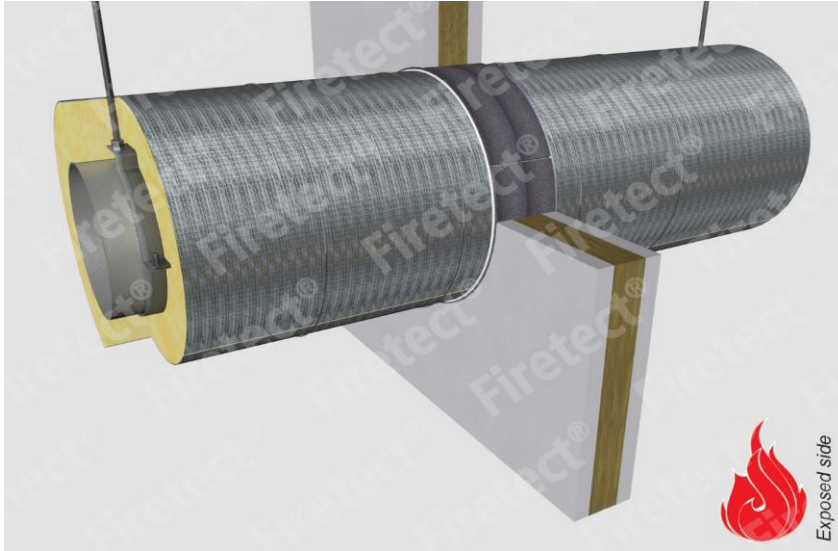


tested property
test method
service no.

fire resistance
EN 1366-3
21-6



steel pipes

Ø8	1,0	PA coating	200 LI	EI 90	flexible walls ≥ 100 mm	Wrap		application	finish	max. opening	pipe end	max. angle
						length	no. of layers					
Ø8	1,0	PA coating	200 LI	EI 90	flexible walls ≥ 100 mm	-	-	2 sides	-	8 mm	CU + UIC + CC	default
Ø15	1,0	glass / rock wool 20mm	1200 CS + CI	EI 120	flexible walls ≥ 100 mm	π x Ø x 1	1	2 sides	*	59 mm	CU + UIC + CC	perpendicular + all angles between 90° and 45°
			1200 CS + CI	EI 240	rigid walls ≥ 150 mm	TT x Ø x 2	2	2 sides	*	63 mm	UIC + C/C	
		20mm	1200 CS + CI	EI 180	rigid walls ≥ 150 mm	π x Ø x 1	1	2 sides	*	63 mm	CU + UIC + CC	
			1200 CS + CI	EI 240	flexible walls ≥ 100 mm	π x Ø x 1	1	2 sides	*	79 mm	CU + UIC + CC	
		30mm	1200 CS + CI	EI 240	rigid walls ≥ 150 mm	π x Ø x 2	2	2 sides	*	83 mm	UIC + C/C	
			1200 CS + CI	EI 120	flexible walls ≥ 100 mm	π x Ø x 1	1	2 sides	*	99 mm	CU + UIC + CC	
		40mm	1200 CS + CI	EI 240	rigid walls ≥ 150 mm	TT x Ø x 2	2	2 sides	*	103 mm	UIC + C/C	
			1200 CS + CI	EI 120	flexible walls ≥ 100 mm	π x Ø x 2	2	2 sides	*	123 mm	CU + UIC + CC	
		50mm	1200 CS + CI	EI 240	rigid walls ≥ 150 mm	TT x Ø x 2	2	2 sides	*	123 mm	UIC + C/C	
			1200 CS + CI	EI 120	flexible walls ≥ 100 mm	TT x Ø x 3	3	2 sides	*	147 mm	UIC + C/C	
60mm	1200 CS + CI	EI 120	rigid walls ≥ 150 mm	TT x Ø x 3	3	2 sides	*	202 mm	UIC + C/C			
	1200 CS + CI	EI 120	rigid walls ≥ 150 mm	TT x Ø x 3	3	2 sides	*	202 mm	UIC + C/C			
Ø22	1,1	glass / rock wool 22mm	1200 CS + CI	EI 180	rigid walls ≥ 150 mm	π x Ø x 1	1	2 sides	*	86 mm	CU + UIC + CC	perpendicular + all angles between 90° and 45°
			1200 CS + CI	EI 180	rigid walls ≥ 150 mm	π x Ø x 1	1	2 sides	*	86 mm	CU + UIC + CC	
Ø35	1,5	glass / rock wool 22mm	1200 CS + CI	EI 180	rigid walls ≥ 150 mm	π x Ø x 1	1	2 sides	*	99 mm	CU + UIC + CC	perpendicular + all angles between 90° and 45°
			1200 CS + CI	EI 180	rigid walls ≥ 150 mm	π x Ø x 1	1	2 sides	*	99 mm	CU + UIC + CC	
Ø42,2	3,25	glass / rock wool 20mm	1200 CS + CI	EI 120	flexible walls ≥ 100 mm	π x Ø x 1	1	2 sides	*	86 mm	CU + UIC + CC	perpendicular + all angles between 90° and 45°
			1200 CS + CI	EI 240	rigid walls ≥ 150 mm	TT x Ø x 2	2	2 sides	*	102 mm	CU + UIC + C/C	
		30mm	1200 CS + CI	EI 90	flexible walls ≥ 100 mm	π x Ø x 1	1	2 sides	*	106 mm	CU + UIC + CC	
			1200 CS + CI	EI 240	rigid walls ≥ 150 mm	TT x Ø x 2	2	2 sides	*	110 mm	CU + UIC + C/C	
		40mm	1200 CS + CI	EI 90	flexible walls ≥ 100 mm	π x Ø x 1	1	2 sides	*	126 mm	CU + UIC + CC	
			1200 CS + CI	EI 240	rigid walls ≥ 150 mm	TT x Ø x 2	2	2 sides	*	130 mm	CU + UIC + C/C	
		50mm	1200 CS + CI	EI 120	flexible walls ≥ 100 mm	π x Ø x 2	2	2 sides	*	150 mm	CU + UIC + CC	
			1200 CS + CI	EI 240	rigid walls ≥ 150 mm	TT x Ø x 2	2	2 sides	*	150 mm	CU + UIC + C/C	
		60mm	1200 CS + CI	EI 60	flexible walls ≥ 100 mm	π x Ø x 3	3	2 sides	*	174 mm	CU + UIC + CC	
			1200 CS + CI	EI 180	rigid walls ≥ 150 mm	TT x Ø x 3	3	2 sides	*	174 mm	CU + UIC + C/C	
		80mm	1200 CS + CI	EI 60	flexible walls ≥ 100 mm	π x Ø x 3	3	2 sides	*	214 mm	CU + UIC + CC	
			1200 CS + CI	EI 180	rigid walls ≥ 150 mm	TT x Ø x 3	3	2 sides	*	220 mm	CU + UIC + C/C	
Ø76	2,1	glass / rock wool 20mm	1200 CS + CI	EI 90	flexible walls ≥ 100 mm	π x Ø x 2	2	2 sides	*	124 mm	CU + UIC + CC	perpendicular + all angles between 90° and 45°
			1200 CS + CI	EI 240	rigid walls ≥ 150 mm	TT x Ø x 2	2	2 sides	*	132 mm	UIC + C/C	
		30mm	1200 CS + CI	EI 90	flexible walls ≥ 100 mm	π x Ø x 2	2	2 sides	*	144 mm	CU + UIC + CC	
			1200 CS + CI	EI 120	rigid walls ≥ 150 mm	TT x Ø x 2	2	2 sides	*	144 mm	UIC + C/C	
		40mm	1200 CS + CI	EI 90	flexible walls ≥ 100 mm	π x Ø x 1	1	2 sides	*	160 mm	CU + UIC + CC	
			1200 CS + CI	EI 120	rigid walls ≥ 150 mm	TT x Ø x 2	2	2 sides	*	164 mm	UIC + C/C	
		50mm	1200 CS + CI	EI 90	flexible walls ≥ 100 mm	π x Ø x 2	2	2 sides	*	184 mm	CU + UIC + CC	
			1200 CS + CI	EI 120	rigid walls ≥ 150 mm	TT x Ø x 2	2	2 sides	*	202 mm	UIC + C/C	
		60mm	1200 CS + CI	EI 90	flexible walls ≥ 100 mm	π x Ø x 3	3	2 sides	*	208 mm	CU + UIC + CC	
			1200 CS + CI	EI 120	rigid walls ≥ 150 mm	TT x Ø x 3	3	2 sides	*	208 mm	UIC + C/C	
80mm	1200 CS + CI	EI 90	flexible walls ≥ 100 mm	π x Ø x 3	3	2 sides	*	248 mm	CU + UIC + CC			
	1200 CS + CI	EI 120	rigid walls ≥ 150 mm	TT x Ø x 3	3	2 sides	*	248 mm	UIC + C/C			
max.												
Ø219,1	4,5	glass / rock wool 20mm	1200 CS + CI	EI 60	flexible walls ≥ 100 mm	π x Ø x 1	1	2 sides	*	263 mm	CU + UIC + CC	perpendicular + all angles between 90° and 45°
			1200 CS + CI	EI 60	flexible walls ≥ 100 mm	π x Ø x 1	1	2 sides	*	283 mm	CU + UIC + CC	
			1200 CS + CI	EI 120	flexible walls ≥ 100 mm	π x Ø x 1	1	2 sides	*	303 mm	CU + UIC + CC	
			1200 CS + CI	EI 120	flexible walls ≥ 100 mm	π x Ø x 2	2	2 sides	*	327 mm	CU + UIC + CC	
			1200 CS + CI	EI 90	flexible walls ≥ 100 mm	π x Ø x 3	3	2 sides	*	351 mm	CU + UIC + CC	
			1200 CS + CI	EI 90	flexible walls ≥ 100 mm	π x Ø x 3	3	2 sides	*	391 mm	CU + UIC + CC	

¹⁾ Penetration services must be supported; support distance ≤ 500mm.

²⁾ Pipe insulation must be fastened individually (not wrapped!) with steel wire; at max. 50mm + 300mm from constructive element.

³⁾ Constructive element must be classified acc. EN 13501-2 for the required fire resistance period. EI for flexible walls ≥ 100mm is also applicable for rigid walls ≥ 100mm!

* smokeseal Acrylic on 2 sides