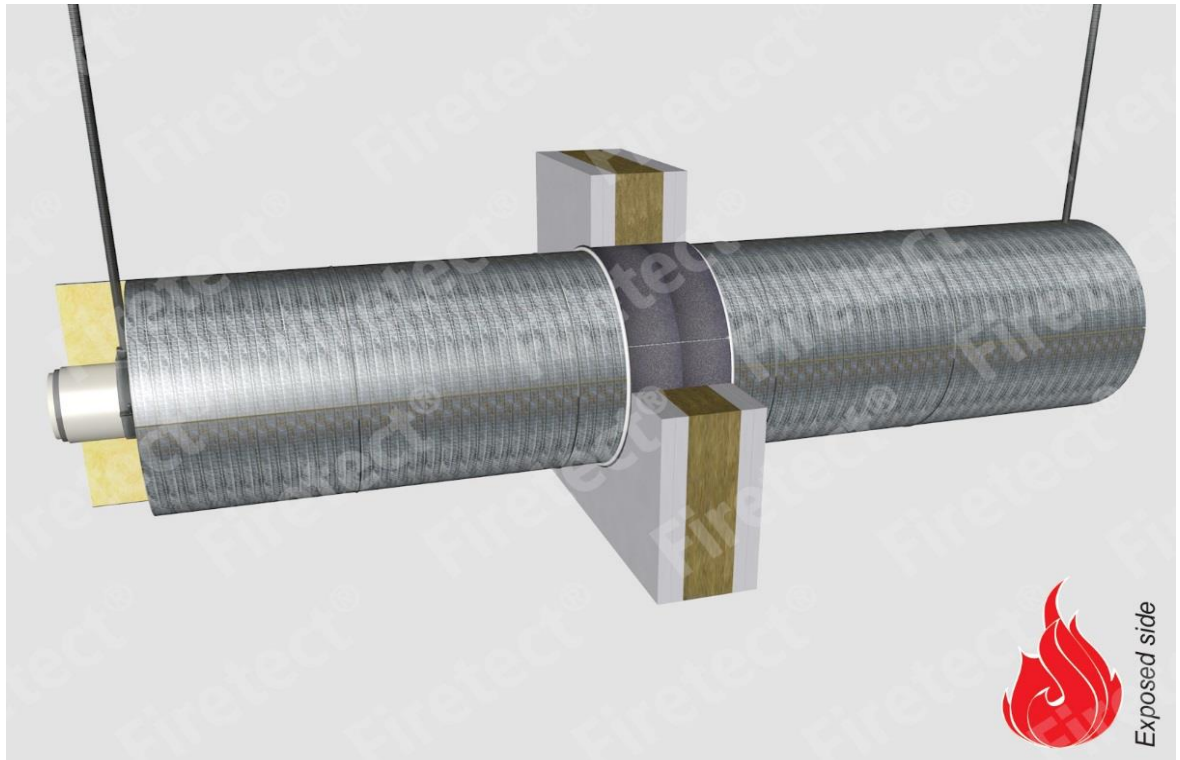


tested property  
test method  
service no.

fire resistance  
EN 1366-3  
21-3



### aluPE-X pipes

#### Wrap

service type <sup>1)</sup> dØ (mm)	s1 (mm)	pipe insulation <sup>2)</sup> min. 75 kg/m <sup>3</sup> eg Climpipe, Rockwool or U Protect Pipe Section Alu2	EI	constructive element <sup>3)</sup>	Firetect pipe wrap length π x Ø x no. of layers	application 1 or 2 sides	finish required	max. opening in construction	pipe end configuration	max. angle	
Ø16	2,0	glass / rock wool 20mm	1200 CS + CI	EI 120	flexible walls ≥ 100 mm	TT x Ø x 1	2 sides	*	60 mm	U/C + C/C	perpendicular + all angles between 90° and 45°
		20mm	1200 CS + CI	EI 240	rigid walls ≥ 150 mm	TT x Ø x 2	2 sides	*	64 mm	U/C + C/C	
	30mm	30mm	1200 CS + CI	EI 120	flexible walls ≥ 100 mm	TT x Ø x 1	2 sides	*	80 mm	U/C + C/C	
		30mm	1200 CS + CI	EI 240	rigid walls ≥ 150 mm	TT x Ø x 2	2 sides	*	84 mm	U/C + C/C	
		40mm	1200 CS + CI	EI 120	flexible walls ≥ 100 mm	TT x Ø x 1	2 sides	*	100 mm	U/C + C/C	
		40mm	1200 CS + CI	EI 240	rigid walls ≥ 150 mm	TT x Ø x 2	2 sides	*	104 mm	U/C + C/C	
		50mm	1200 CS + CI	EI 120	flexible walls ≥ 100 mm	TT x Ø x 2	2 sides	*	124 mm	U/C + C/C	
		50mm	1200 CS + CI	EI 240	rigid walls ≥ 150 mm	TT x Ø x 2	2 sides	*	124 mm	U/C + C/C	
Ø75	7,5	glass / rock wool 20mm	1200 CS + CI	EI 120	flexible walls ≥ 100 mm	TT x Ø x 1	2 sides	*	119 mm	U/C + C/C	perpendicular + all angles between 90° and 45°
		20mm	1200 CS + CI	EI 240	rigid walls ≥ 150 mm	TT x Ø x 2	2 sides	*	123 mm	U/C + C/C	
	30mm	30mm	1200 CS + CI	EI 120	flexible walls ≥ 100 mm	TT x Ø x 1	2 sides	*	139 mm	U/C + C/C	
		30mm	1200 CS + CI	EI 240	rigid walls ≥ 150 mm	TT x Ø x 2	2 sides	*	143 mm	U/C + C/C	
		40mm	1200 CS + CI	EI 120	flexible walls ≥ 100 mm	TT x Ø x 1	2 sides	*	159 mm	U/C + C/C	
		40mm	1200 CS + CI	EI 240	rigid walls ≥ 150 mm	TT x Ø x 2	2 sides	*	163 mm	U/C + C/C	
		50mm	1200 CS + CI	EI 120	flexible walls ≥ 100 mm	TT x Ø x 2	2 sides	*	183 mm	U/C + C/C	
		50mm	1200 CS + CI	EI 240	rigid walls ≥ 150 mm	TT x Ø x 2	2 sides	*	183 mm	U/C + C/C	
max.	80mm	1200 CS + CI	EI 120	flexible walls ≥ 100 mm	TT x Ø x 3	2 sides	*	207 mm	U/C + C/C		
		1200 CS + CI	EI 240	rigid walls ≥ 150 mm	TT x Ø x 3	2 sides	*	207 mm	U/C + C/C		
		1200 CS + CI	EI 120	flexible walls ≥ 100 mm	TT x Ø x 3	2 sides	*	247 mm	U/C + C/C		
		1200 CS + CI	EI 240	rigid walls ≥ 150 mm	TT x Ø x 3	2 sides	*	247 mm	U/C + C/C		

\* smoke seal Acrylic on 2 sides

<sup>1)</sup> Penetration services must be supported; support distance ≤ 500mm.

<sup>2)</sup> Pipe insulation must be fastened individually (not wrapped!) with steel wire; at max. 50mm + 300mm from constructive element.

<sup>3)</sup> Constructive element must be classified acc. EN 13501-2 for the required fire resistance period. EI for flexible walls ≥ 100mm is also applicable for rigid walls ≥ 100mm!